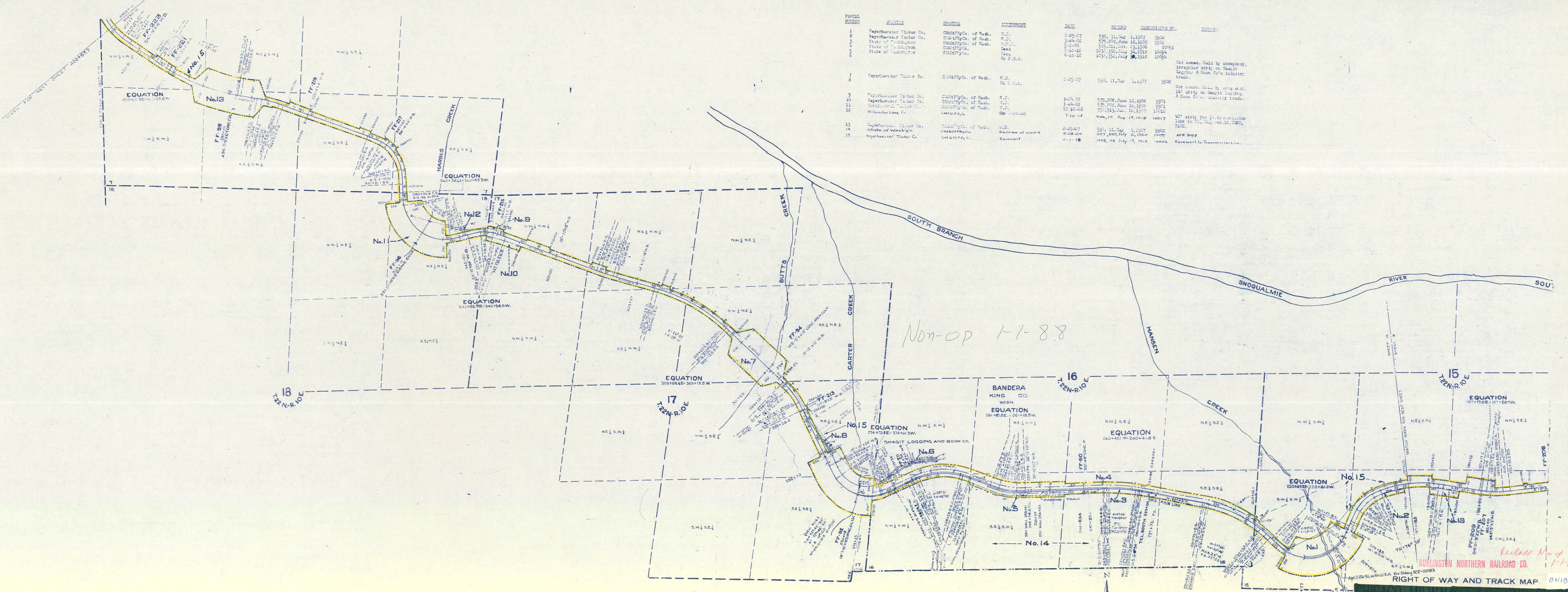


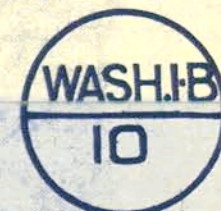
PARCEL NUMBER	GRANTOR	GRANTEE	INCORPORATION	DATE	ACRES	RECORD	RECORDING NO.	REMARKS
1	Weyerhaeuser Timber Co.	CM&STP Co. of Wash.	W.D.	2-25-07	530, 11, 140	1, 1907	9902	
2	Weyerhaeuser Timber Co.	CM&STP Co. of Wash.	W.D.	3-24-06	575, 208, June 10, 1908		9901	
3	State of Washington	CM&STP Co. of Wash.	W.D.	9-20-06	559, 241, Oct. 23, 1906		10091	
4	State of Washington	CM&STP Co.	W.D.	6-18-18	1039, 394, July 30, 1918		10094	
5	State of Washington	CM&STP Co.	W.D.	6-18-18	1039, 394, July 30, 1918		10094	
6	Weyerhaeuser Timber Co.	CM&STP Co. of Wash.	W.D.	2-25-07	530, 11, 140	1, 1907	9902	Not owned. Held by occupancy, irregular strip on Skagit Logging & Boom Co's industry track.
7	Weyerhaeuser Timber Co.	CM&STP Co. of Wash.	W.D.	2-25-07	530, 11, 140	1, 1907	9902	Not owned. Held by occupancy, irregular strip on Skagit Logging & Boom Co's industry track.
8	Weyerhaeuser Timber Co.	CM&STP Co. of Wash.	W.D.	3-24-06	575, 208, June 10, 1908		9901	
9	Weyerhaeuser Timber Co.	CM&STP Co. of Wash.	W.D.	3-24-06	575, 208, June 10, 1908		9901	
10	Weyerhaeuser Timber Co.	CM&STP Co. of Wash.	W.D.	3-24-06	575, 208, June 10, 1908		9901	
11	Central Timber Co.	CM&STP Co. of Wash.	W.D.	10-10-06	559, 241, Jan. 26, 1907		10012	
12	Milwaukee Lumber Co.	CM&STP Co.	W.D.	7-20-17	1039, 10 Aug. 15, 1918		10017	40' strip for Co. transmission line in line with sec. 16, 2220, R100.
13	Weyerhaeuser Timber Co.	CM&STP Co. of Wash.	W.D.	2-25-07	530, 11, 140	1, 1907	9902	
14	State of Wash'n	CM&STP Co.	Decree of court	5-24-06	1107, 659, July 4, 1920		10092	AFE 8558
15	Weyerhaeuser Timber Co.	CM&STP Co.	Easement	11-1-18	1068, 48 July 17, 1919		10022	Easement to Treatment Line.



5 Wires of the Postal Telegraph Cable Co. of Wash. are hung on Railway Co's Telegraph Pole Line between Hyak Depot and a point 3.5 Mi. West of Garcia of about station 740+00 See Agmt. No. 4495, dated Oct. 10, 1921, R.E. File No. 216.

Sheet No. 10 of 19 sheets of C. M. & St. P. Ry. Co. Main Line from survey station 197+18.8 to survey station 408+67.7  
*A. E. Lodge*  
 Valuation Engineer

OPERATED BY THE  
 COAST DIVISION  
 STATION 197+18.8 TO STATION 408+67.7  
 SCALE: 1 IN. = 4 MILES  
 JUNE 30, 1919  
 OFFICE OF VALUATION ENGINEER  
 CHICAGO, ILLINOIS



BURLINGTON NORTHERN RAILROAD CO.  
 RIGHT OF WAY AND TRACK MAP  
 BN18-10

Release No. of 1-1-88