

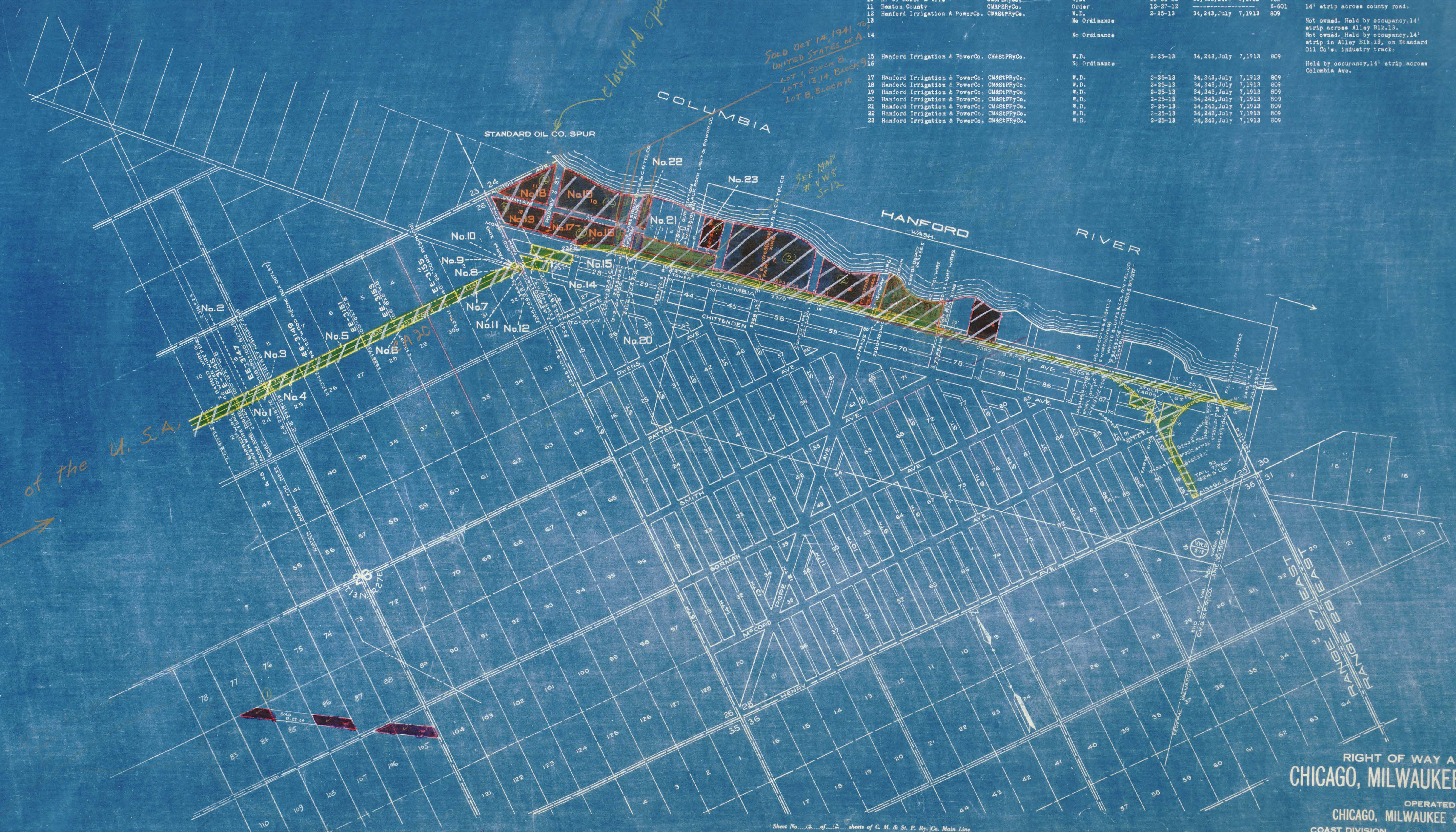
PARCEL NUMBER	GRANTOR	GRANTEE	INSTRUMENT	DATE	RECORD	CUSTODIAN'S NO.	REMARKS
1	J. D. Harvey & Wife	CM&STPRyCo.	W.D.	10-16-12	31,618, Nov. 14, 1912	988	
2	J. D. Harvey & Wife	CM&STPRyCo.	W.D.	10-16-12	31,619, Oct. 14, 1912	986	
3	W. H. Weymiller & Wife	CM&STPRyCo.	Q.C.D.	10-15-12	31,618, Nov. 14, 1912	971	
4	W. H. Weymiller & Wife	CM&STPRyCo.	Q.C.D.	10-15-12	31,618, Nov. 14, 1912	971	
5	A. G. Sreft & Wife	CM&STPRyCo.	Q.C.D.	10-15-12	31,619, Nov. 14, 1912	974	
6	E. W. Fowlson, et al	CM&STPRyCo.	Q.C.D.	10-14-12	31,613, Nov. 14, 1912	977	
7	A. H. Barkley & Wife	CM&STPRyCo.	W.D.	1-6-13	33,259, Jan. 29, 1913	985	
8	A. H. Barkley & Wife	CM&STPRyCo.	W.D.	1-6-13	33,259, Jan. 29, 1913	985	
9	H. C. Baker & Wife	CM&STPRyCo.	W.D.	10-30-12	32,423, Dec. 5, 1912	961	
10	H. C. Baker & Wife	CM&STPRyCo.	W.D.	10-30-12	32,423, Dec. 5, 1912	961	
11	Hanford County	CM&STPRyCo.	Order	12-27-12		1-601	14' strip across county road.
12	Hanford Irrigation & PowerCo.	CM&STPRyCo.	W.D.	2-25-18	34,243, July 7, 1918	809	Not owned. Held by occupancy, 14' strip across Alley Blk. 13.
13			No Ordinance				Not owned. Held by occupancy, 14' strip in Alley Blk. 13, on Standard Oil Co.'s industry track.
14			No Ordinance				Held by occupancy, 14' strip across Columbia Ave.
15	Hanford Irrigation & PowerCo.	CM&STPRyCo.	W.D.	2-25-18	34,243, July 7, 1918	809	
16			No Ordinance				
17	Hanford Irrigation & PowerCo.	CM&STPRyCo.	W.D.	2-25-18	34,243, July 7, 1918	809	
18	Hanford Irrigation & PowerCo.	CM&STPRyCo.	W.D.	2-25-18	34,243, July 7, 1918	809	
19	Hanford Irrigation & PowerCo.	CM&STPRyCo.	W.D.	2-25-18	34,243, July 7, 1918	809	
20	Hanford Irrigation & PowerCo.	CM&STPRyCo.	W.D.	2-25-18	34,243, July 7, 1918	809	
21	Hanford Irrigation & PowerCo.	CM&STPRyCo.	W.D.	2-25-18	34,243, July 7, 1918	809	
22	Hanford Irrigation & PowerCo.	CM&STPRyCo.	W.D.	2-25-18	34,243, July 7, 1918	809	
23	Hanford Irrigation & PowerCo.	CM&STPRyCo.	W.D.	2-25-18	34,243, July 7, 1918	809	

All - New Property of the U.S.A.

Classified Open DPW 9-5-27

SOLD OCT 14 1941
UNITED STATES GEA
LOT 1, BLOCK 8
LOT 13, 14, BLOCK 10
LOT 8, BLOCK 10

SEE MAP
H. V. W. S.
5-13



Sheets No. 12 of 12 sheets of C. M. & St. P. Ry. Co. Main Line
from survey station 2316+28 to survey station 2415+93.5
A. S. Lodge
Valuation Engineer

RIGHT OF WAY AND TRACK MAP
CHICAGO, MILWAUKEE & ST. PAUL RY. CO.
OPERATED BY THE
CHICAGO, MILWAUKEE & ST. PAUL RY. CO.
COAST DIVISION PRIEST RAPIDS LINE
STATION 2316+28 TO STATION 2415+93.5
SCALE: 1 1/2" = 1 MILE JUNE 30, 1918.
OFFICE OF VALUATION ENGINEER
CHICAGO, ILLINOIS.