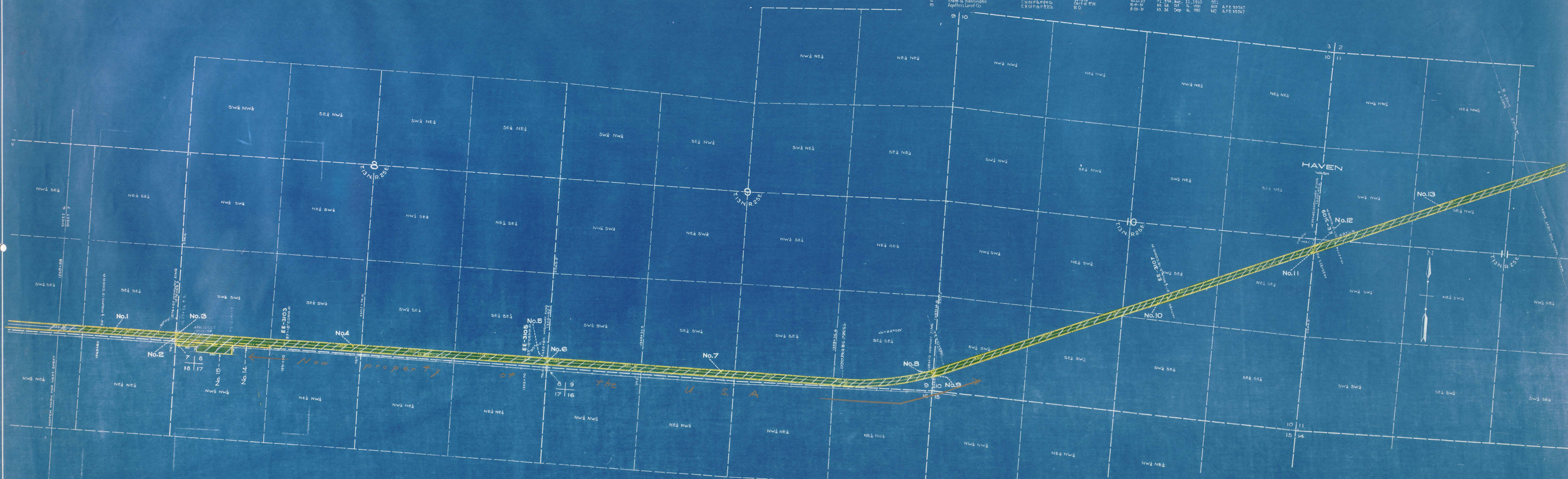


PARCEL NUMBER	GRANTOR	GRANTEE	INSTRUMENT	DATE	RECORD	QUOTIDIAN'S NO.	REMARKS
1	Hanford Irrigation & Power Co.	CMAPSHY Co.	Q.C.D.	6-1-10	21,334, Aug. 11, 1910	551	
2	Hanford Irrigation & Power Co.	CMAPSHY Co.	Q.C.D.	6-1-10	21,334, Aug. 11, 1910	551	
3	State of Washington	CMAPSHY Co.	R.W.D.	10-10-11	28, 9, Nov. 19, 1911	601	
4	State of Washington	CMAPSHY Co.	R.W.D.	10-10-11	28, 9, Nov. 19, 1911	601	
5	Hanford Irrigation & Power Co.	CMAPSHY Co.	Q.C.D.	10-10-11	28, 9, Nov. 19, 1911	601	
6	Hanford Irrigation & Power Co.	CMAPSHY Co.	Q.C.D.	6-1-10	21,334, Aug. 11, 1910	551	
7	Hanford Irrigation & Power Co.	CMAPSHY Co.	Q.C.D.	6-1-10	21,334, Aug. 11, 1910	551	
8	State of Washington	CMAPSHY Co.	R.W.D.	7-28-11	26, 159, Aug. 23, 1911	617	
9	State of Washington	CMAPSHY Co.	R.W.D.	7-28-11	26, 159, Aug. 23, 1911	617	
10	Hanford Irrigation & Power Co.	CMAPSHY Co.	Q.C.D.	6-1-10	21,334, Aug. 11, 1910	551	
11	State of Washington	CMAPSHY Co.	R.W.D.	7-28-11	26, 159, Aug. 23, 1911	617	
12	Hanford Irrigation & Power Co.	CMAPSHY Co.	Q.C.D.	6-1-10	21,334, Aug. 11, 1910	551	
13	Hanford Irrigation & Power Co.	CMAPSHY Co.	Q.C.D.	6-1-10	21,334, Aug. 11, 1910	551	
14	State of Washington	CMAPSHY Co.	R.W.D.	6-1-10	21,334, Aug. 11, 1910	551	
15	Agathon Land Co.	C.M. & St. P. Ry. Co.	W.D.	6-23-11	63, 34, Sep. 16, 1911	627	A.F.E. 55267



RIGHT OF WAY AND TRACK MAP
CHICAGO, MILWAUKEE & ST. PAUL RY. CO.

OPERATED BY THE
CHICAGO, MILWAUKEE & ST. PAUL RY. CO.
 COAST DIVISION PRIEST RAPIDS LINE
 STATION 1260+28 TO STATION 1471+48

Sheet No. 7 of 12 sheets of C. M. & St. P. Ry. Co. Main Line
 from survey station 1260+28 to survey station 1471+48
A. E. Lodge
 Valuation Engineer

SCALE: 1 IN. = 4 MILES JUNE 30, 1913.
 OFFICE OF VALUATION ENGINEER
 CHICAGO, ILLINOIS.

Benton