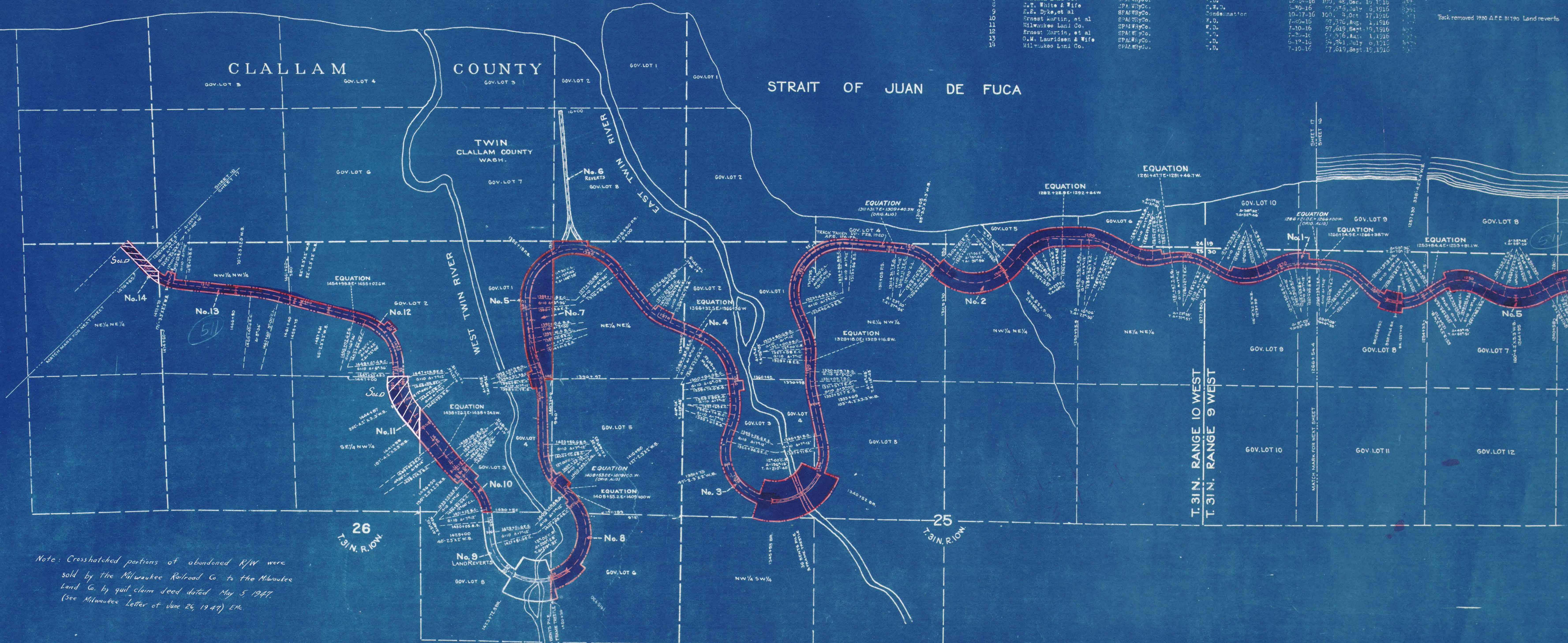


PARCEL NUMBER	GRANTOR	GRANTEE	INSTRUMENT	DATE	RECORD	CUSTOMER'S NO.	REMARKS
1	Paget Sound Mills & Timber Co.	SPALWYCO.	F.D.	6-13-16	97,511, July 6, 1916	4199	
2	W.F. Warner	SPALWYCO.	F.D.	7-6-16	97,517, July 6, 1916	4198	
3	J.T. White & Wife	SPALWYCO.	S.W.T.	5-30-16	97,516, July 6, 1916	4197	
4	C.S. Noble & Wife	SPALWYCO.	F.D.	7-1-16	97,518, July 21, 1916	4196	
5	Concox Land Co.	SPALWYCO.	F.D.	11-13-16	100, 36, Dec. 15, 1916	4195	
6							Not owned. Held by occupancy irregular strip in Gov't. Lot 6 Sec. 27, T.10N., R.10W., or rail track
7	Concox Land Co.	SPALWYCO.	F.D.	12-14-16	100, 38, Dec. 15, 1916	4194	
8	J.T. White & Wife	SPALWYCO.	F.W.T.	4-30-16	97,515, July 6, 1916	4193	
9	E.R. Dyke, et al	SPALWYCO.	Condemnation	10-17-16	100, 38, Dec. 17, 1916	4192	
10	Ernest Martin, et al	SPALWYCO.	F.D.	7-26-16	97,519, Aug. 4, 1916	4191	
11	Milwaukee Land Co.	SPALWYCO.	F.D.	7-30-16	97,619, Sept. 19, 1916	4190	
12	Ernest Martin, et al	SPALWYCO.	F.D.	7-23-16	97,516, July 6, 1916	4189	
13	G.M. Lauridsen & Wife	SPALWYCO.	F.D.	5-19-16	97,513, July 6, 1916	4188	
14	Milwaukee Land Co.	SPALWYCO.	F.D.	7-10-16	97,619, Sept. 15, 1916	4187	



Note: Cross-hatched portions of abandoned R/W were sold by the Milwaukee Railroad Co. to the Milwaukee Land Co. by quit claim deed dated May 5, 1947. (See Milwaukee Letter of June 26, 1947) EM.

NOTE: DOTTED CENTER LINE AND FIGURES IN SLASH LETTERS ARE ORIGINAL CENTER LINE AND ORIGINAL CHANGING

TRACK REMOVED 1930 - R/W TRANSFERRED TO ACCT. 705 AFE No. 31790

RIGHT OF WAY AND TRACK MAP
CHICAGO, MILWAUKEE & ST. PAUL RY. CO.
 OPERATED BY THE
CHICAGO, MILWAUKEE & ST. PAUL RY. CO.

Sheet No. 17 of 18 sheets of C. M. & St. P. Ry. Co. Main Line
 from survey station 1266+54.4 to survey station 1476+65
A.E. Lodge
 Valuation Engineer

OLYMPIC DIVISION MAIN LINE
 STATION 1266+54.4 TO STATION 1476+65
 SCALE: 1" = 400 FT. JUNE 30 1918
 OFFICE OF VALUATION ENGINEER
 CHICAGO, ILLINOIS

N. WASH. 21
 17

CLALLAM