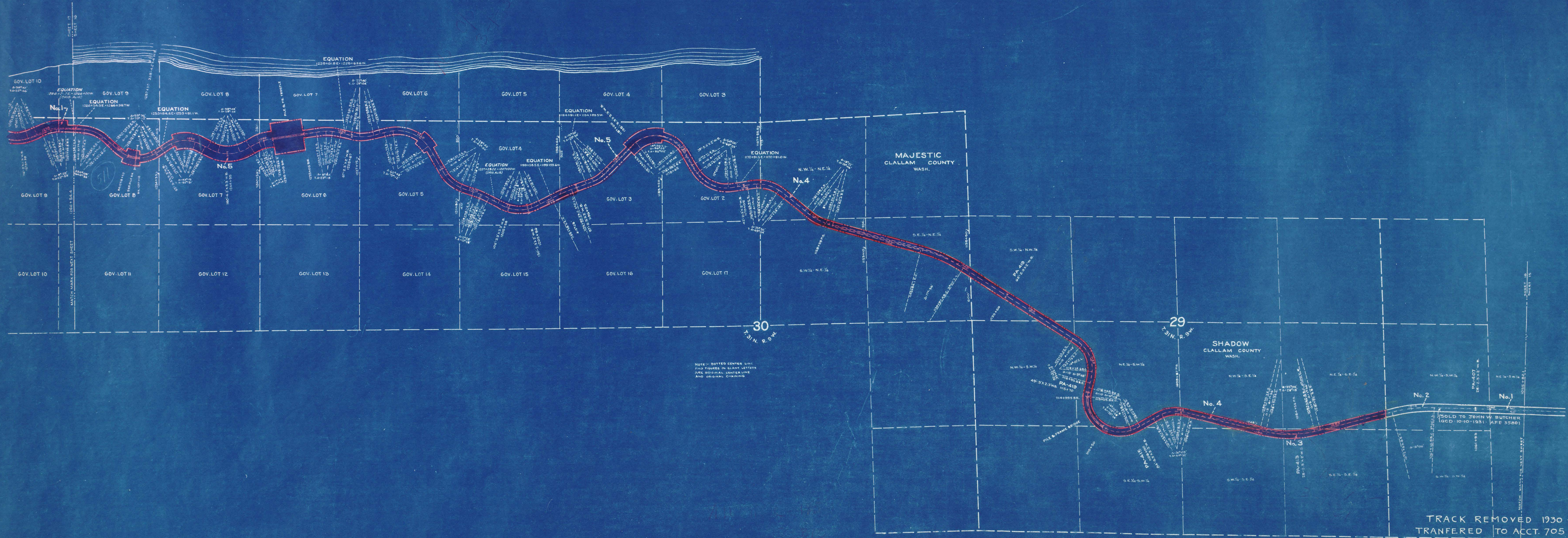


STRAIT OF JUAN DE FUCA

PARCEL NUMBER	GRANTOR	GRANTEE	INSTRUMENT	DATE	RECORD	CREATION NO.	SP. NO.
1	J.W. Butcher & Wife	SPALDING	T.D.	7-14-14	94,989, July 31, 1914	541	
2	First Trust & Savings Bank of Chicago, Ill., et al	SPALDING	Condemnation	7-19-14	99,513, Sept. 27, 1914	2792	
3	Milwaukee Land Co.	SPALDING	T.D.	7-3-14	95,506, Feb. 1, 1915	542	
4	First Trust & Savings Bank of Chicago, Ill., et al	SPALDING	Condemnation	7-19-14	99,513, Sept. 28, 1914	2792	
5	Page & Sound Kill & Timber Co.	SPALDING	T.D.	6-13-16	97,541, July 6, 1916	543	



NOTE: DOTTED CENTER LINE AND FIGURES IN BLACK LETTERS ARE ORIGINAL CENTER LINE AND ORIGINAL CHAINING

TRACK REMOVED 1930 - R/W TRANSFERRED TO ACCT. 705 AFE No. 31790

RIGHT OF WAY AND TRACK MAP

CHICAGO, MILWAUKEE & ST. PAUL RY. CO.

OPERATED BY THE CHICAGO, MILWAUKEE & ST. PAUL RY. CO.

OLYMPIC DIVISION MAIN LINE STATION 1055+82.1 TO STATION 1266+54.4

SCALE 1 IN. = 400 FT. JUNE 30 1916 OFFICE OF VALUATION ENGINEER CHICAGO, ILLINOIS.

Sheet No. 12 of 15 sheets of C. M. & St. P. Ry. Co. Main Line from survey station 1055+82.1 to survey station 1266+54.4

A.E. Lodge
Valuation Engineer

V. WASH. 21
16

CLALLAM