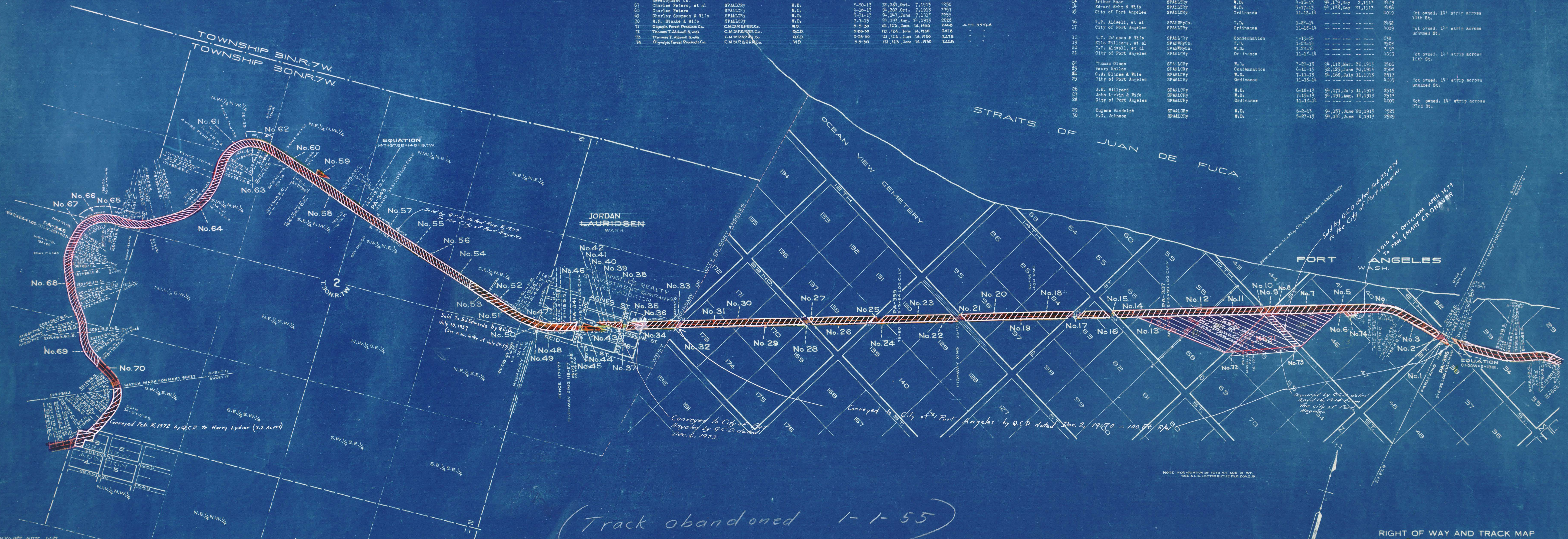


BOOK	GRANTOR	GRANTEE	INSTRUMENT	DATE	RECORD	QUANTITY AC.	REMARKS	PANEL	GRANTOR	GRANTEE	INSTRUMENT	DATE	RECORD	QUANTITY AC.	REMARKS	
31	Peter Grubb & Wife	SPALDING	Ordinance	1-2-14	2,253, Jan. 29, 1917	2534	Not owned, 1/4' strip across unnamed St.	1	A. F. Dye	SPALDING	Condemnation	9-19-14	23, 102, Sept. 26, 1914	629		
32	City of Port Angeles	SPALDING	Ordinance	11-15-14	---	---	---	2	City of Port Angeles	SPALDING	Ordinance	11-15-14	---	---	630	Not owned, 1/4' strip across N. St.
33	W.A. Kulp, et al	SPALDING	Condemnation	9-27-13	22, 278, Oct. 6, 1913	1272		3	Jules Zindien & Wife	SPALDING	Condemnation	9-19-14	---	---	631	
61	The Port Angeles Land & Development Co.	SPALDING	W.D.	5-21-13	94, 145, June 7, 1913	2222		4	H.C. Post	SPALDING	W.D.	1-22-14	94, 245, Jan. 29, 1917	2456		
62	The Port Angeles Land & Development Co.	SPALDING	Snow Easement in W.D.	5-21-13	94, 145, June 7, 1913	2222		5	W.C. Scullion	SPALDING	W.D.	12-21-12	6, 349, Nov. 27, 1911	2477		
63	The Port Angeles Land & Development Co.	SPALDING	Snow Easement in W.D.	5-21-13	94, 145, June 7, 1913	2222		6	E. Heatsness & Wife	SPALDING	W.D.	9-16-13	94, 201, Oct. 6, 1913	2477		
64	The Port Angeles Land & Development Co.	SPALDING	W.D.	6-1-13	94, 154, June 20, 1913	2226		7	T.T. Aldwell & Wife	SPALDING	Ordinance	11-15-14	---	---	4029	Not owned, 1/4' strip across unnamed St. A. No. 3556d
65	The Port Angeles Land & Development Co.	SPALDING	W.D.	5-21-13	94, 145, June 7, 1913	2222		8	City of Port Angeles	SPALDING	Ordinance	11-15-14	---	---	4029	
66	The Port Angeles Land & Development Co.	SPALDING	Snow Easement in W.D.	5-21-13	94, 145, June 7, 1913	2222		9	H.C. Post	SPALDING	W.D.	1-22-14	94, 245, Jan. 29, 1917	2456		
67	Charles Peters, et al	SPALDING	W.D.	4-30-13	36, 289, Oct. 7, 1913	2226		10	City of Port Angeles	SPALDING	Ordinance	11-15-14	---	---	4029	
68	Charles Peters	SPALDING	W.D.	9-16-13	94, 201, Oct. 6, 1913	2477		11	City of Port Angeles	SPALDING	Ordinance	11-15-14	---	---	4029	
69	Charley Sauson & Wife	SPALDING	W.D.	5-11-13	94, 147, June 7, 1913	2259		12	City of Port Angeles	SPALDING	Ordinance	11-15-14	---	---	4029	
70	W.H. Stanks & Wife	SPALDING	W.D.	7-7-13	94, 154, Aug. 14, 1913	2226		13	City of Port Angeles	SPALDING	Ordinance	11-15-14	---	---	4029	
71	Olympic Forest Products Co.	C.M.S.P. & P.R.R. Co.	W.D.	5-2-30	121, 125, June 14, 1930	2448	A. No. 3556d	14	City of Port Angeles	SPALDING	Ordinance	11-15-14	---	---	4029	
72	Thomas T. Alwell & wife	C.M.S.P. & P.R.R. Co.	W.D.	5-2-30	121, 125, June 14, 1930	2448		15	City of Port Angeles	SPALDING	Ordinance	11-15-14	---	---	4029	
73	Thomas T. Alwell & wife	C.M.S.P. & P.R.R. Co.	W.D.	5-2-30	121, 125, June 14, 1930	2448		16	City of Port Angeles	SPALDING	Ordinance	11-15-14	---	---	4029	
74	Olympic Forest Products Co.	C.M.S.P. & P.R.R. Co.	W.D.	5-2-30	121, 125, June 14, 1930	2448		17	City of Port Angeles	SPALDING	Ordinance	11-15-14	---	---	4029	
								18	T.T. Aldwell, et al	SPALDING	W.D.	1-22-14	---	---	2452	Not owned, 1/4' strip across 14th St.
								19	City of Port Angeles	SPALDING	Ordinance	11-15-14	---	---	4029	
								20	City of Port Angeles	SPALDING	Ordinance	11-15-14	---	---	4029	
								21	City of Port Angeles	SPALDING	Ordinance	11-15-14	---	---	4029	
								22	Thomas Olson	SPALDING	W.D.	7-27-13	94, 112, Mar. 26, 1913	2506		
								23	Henry Hallon	SPALDING	Condemnation	6-16-13	22, 123, June 26, 1913	2504		
								24	G.A. Glines & Wife	SPALDING	W.D.	7-11-13	94, 168, July 11, 1913	2517		
								25	City of Port Angeles	SPALDING	Ordinance	11-15-14	---	---	4029	Not owned, 1/4' strip across unnamed St.
								26	A.E. Hilliard	SPALDING	W.D.	6-15-13	94, 171, May 11, 1913	2515		
								27	John Larkin & Wife	SPALDING	W.D.	7-15-13	94, 191, Aug. 14, 1913	2514		
								28	City of Port Angeles	SPALDING	Ordinance	11-15-14	---	---	4029	Not owned, 1/4' strip across 3rd St.
								29	Eugene Randolph	SPALDING	W.D.	6-2-13	94, 157, June 20, 1913	2523		
								30	Har. Johnson	SPALDING	W.D.	5-21-13	94, 141, June 2, 1913	2522		



(Track abandoned 1-1-55)

RIGHT OF WAY AND TRACK MAP
CHICAGO, MILWAUKEE & ST. PAUL RY. CO.
 OPERATED BY THE
CHICAGO, MILWAUKEE & ST. PAUL RY. CO.

Sheet No. 11 of 16 sheets of C. M. & St. P. Ry. Co. Main Line
 from survey station 2+27.2 to survey station 214+30.1
A.E. Lodge
 Valuation Engineer

OLYMPIC DIVISION MAIN LINE
 STATION 2+27.5 TO STATION 214+30.1
 SCALE: 1" = 400 FT. JUNE 30 1918
 OFFICE OF VALUATION ENGINEER
 CHICAGO, ILLINOIS



PLAT 311 OF T. 31N. R. 7W. This plat was on file in the office of the Register of Deeds for the City of Port Angeles, Washington, on July 10, 1917. It is a part of the original record of the City of Port Angeles, Washington, and is subject to the provisions of the Act of Congress, approved March 3, 1909, and the Act of Congress, approved August 1, 1914, relating to the public lands of the United States.