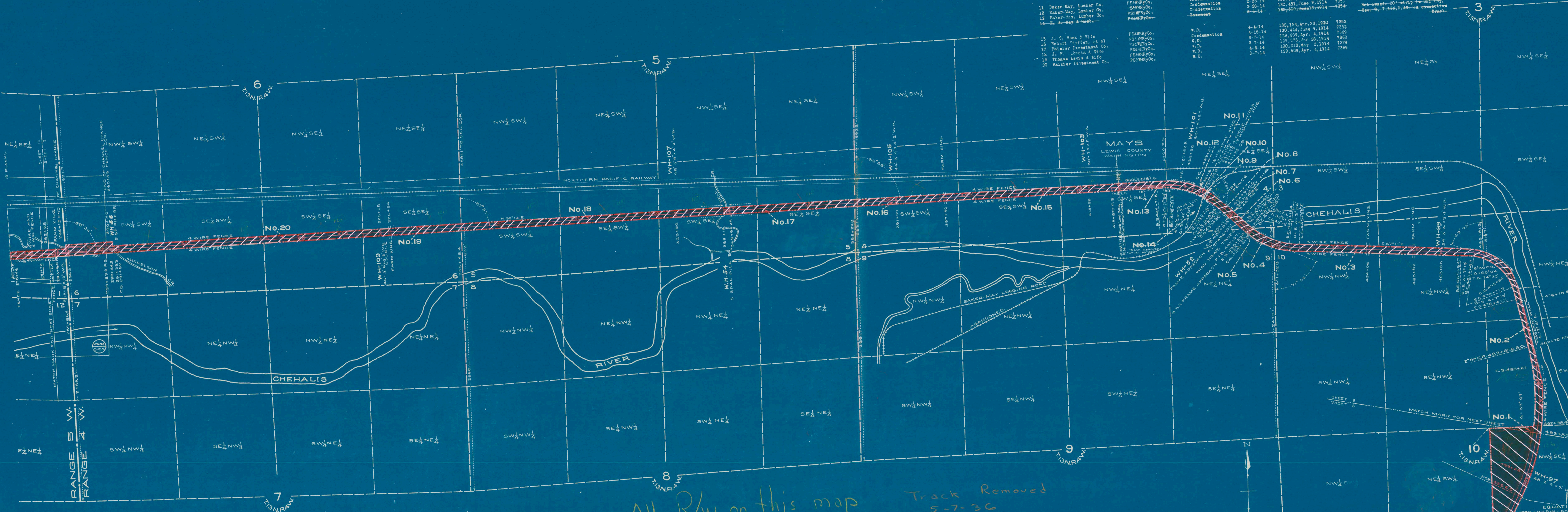


ABOVE	GRANTOR	GRANTEE	INSTRUMENT	DATE	BOOK	ORIGINAL S. NO.	REMARKS
1	Drew Investment Co.	PS&MRY Co.	W.D.	2-19-14	129,435, Apr. 7, 1914	7402	
2	State of Washington	PS&MRY Co.	Condemnation	4-3-18	140, 46, Apr. 13, 1918	7406	
3	Holts of West Midland	PS&MRY Co.	W.D.	12-3-14	130, 94, Apr. 10, 1914	7351	
4	Baker-May, Lumber Co.	PS&MRY Co.	Condemnation	2-25-14	130, 43, June 9, 1914	7351	
5	Baker-May, Lumber Co.	PS&MRY Co.	Condemnation	2-25-14	130, 45, June 9, 1914	7351	
6	Baker-May, Lumber Co.	PS&MRY Co.	Condemnation	2-25-14	130, 43, June 9, 1914	7351	
7	Baker-May, Lumber Co.	PS&MRY Co.	Condemnation	2-25-14	130, 45, June 9, 1914	7351	
8	Baker-May, Lumber Co.	PS&MRY Co.	Condemnation	2-25-14	130, 43, June 9, 1914	7351	
9	Baker-May, Lumber Co.	PS&MRY Co.	Condemnation	2-25-14	130, 45, June 9, 1914	7351	
10	Hessell & Columbia River P.P.Co.	PS&MRY Co.	Agreement	2-7-14		1-780	Crossing Hessell & Columbia River Ry.
11	Baker-May, Lumber Co.	PS&MRY Co.	Condemnation	2-25-14	130, 43, June 9, 1914	7351	
12	Baker-May, Lumber Co.	PS&MRY Co.	Condemnation	2-25-14	130, 45, June 9, 1914	7351	
13	Baker-May, Lumber Co.	PS&MRY Co.	Condemnation	2-25-14	130, 43, June 9, 1914	7351	
14	Baker-May, Lumber Co.	PS&MRY Co.	Condemnation	2-25-14	130, 45, June 9, 1914	7351	
15	J. C. Meek & Wife	PS&MRY Co.	W.D.	4-4-14	120, 154, Apr. 29, 1914	7359	
16	Robert Hoffman, et al	PS&MRY Co.	Condemnation	4-16-14	130, 444, June 9, 1914	7359	
17	Paister Investment Co.	PS&MRY Co.	W.D.	3-7-14	129, 579, Apr. 4, 1914	7360	
18	J. F. ... & Wife	PS&MRY Co.	W.D.	3-7-14	129, 578, Apr. 29, 1914	7360	
19	Thomas Lewis & Wife	PS&MRY Co.	W.D.	4-8-14	130, 219, May 2, 1914	7379	
20	Paister Investment Co.	PS&MRY Co.	W.D.	2-7-14	129, 609, Apr. 4, 1914	7399	



All R/W on this map
 Quit Claimed to Chehalis Western
 RR. Co. Feb. 26, 1940
 See Mil. Report yr. ending 12-31-40
 E.M. 3-22-41

Track Removed
 5-7-36
 See Letter
 on C.A.M.s file

Sheet No. 9 of 17 sheets of C. M. & St. P. Ry. Co. Maytown Raymond Line
 from survey station 427.85 to survey station 287.655
 A. E. Lodge
 Valuation Engineer

CHICAGO, MILWAUKEE & ST. PAUL RY. CO. PE 3-9
 OPERATED BY THE
 CHICAGO, MILWAUKEE & ST. PAUL RY. CO.
 COAST DIVISION MAYTOWN TO RAYMOND
 STATION 493 + 85 TO STATION 282 + 65
 SCALE 1" = 400 FT. JUNE 30 1918
 OFFICE OF VALUATION ENGINEER
 CHICAGO, ILLINOIS
 LEWIS