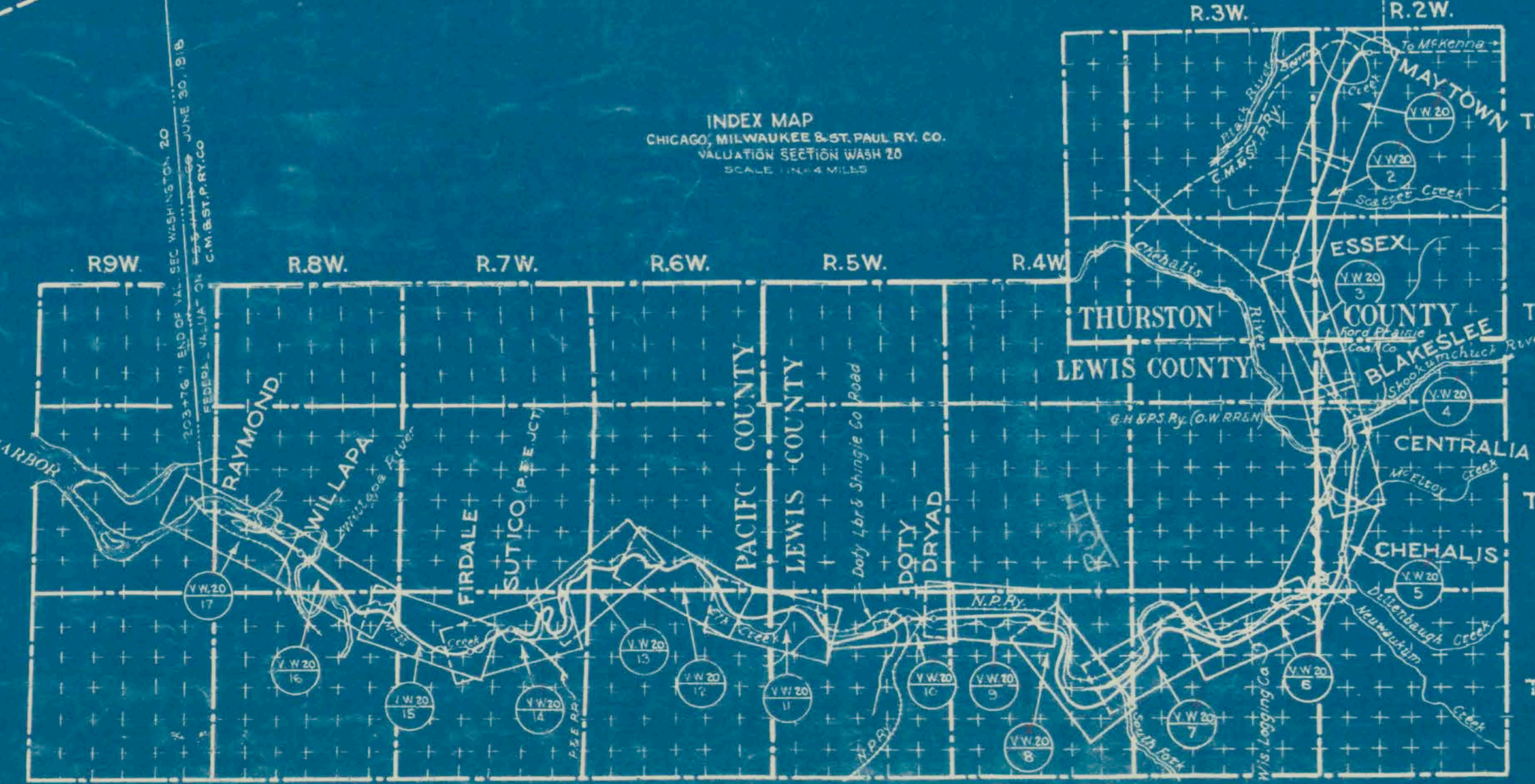


PA. C. I.	OWNER	DATE	REMARKS	ACRES	REMARKS
1	Thurston County	4-2-14	Ordinance	1.187	1'- strip across county road.
2	P. Darcy & Wife	12-31-13	W.D.	80,218.12	80,218.12
3	P. Darcy & Wife	12-31-13	W.D.	80,218.12	80,218.12
4	P. Darcy & Wife	12-31-13	W.D.	80,218.12	80,218.12
5	Thurston County	4-2-14	Ordinance	1.187	1'- strip across county road.
6	Mrs. J. W. Gunstone, et al	12-31-13	W.D.	80,218.12	80,218.12
7	Mrs. J. W. Gunstone, et al	12-31-13	W.D.	80,218.12	80,218.12
8	Mrs. J. W. Gunstone, et al	12-31-13	W.D.	80,218.12	80,218.12
9	Mrs. J. W. Gunstone, et al	12-31-13	W.D.	80,218.12	80,218.12
10	Mrs. J. W. Gunstone, et al	12-31-13	W.D.	80,218.12	80,218.12
11	Olympia Terminal Ry. Co.	12-31-13	W.D.	80,218.12	80,218.12
12	Olympia Terminal Ry. Co.	12-31-13	W.D.	80,218.12	80,218.12
13	Olympia Terminal Ry. Co.	12-31-13	W.D.	80,218.12	80,218.12
14	Wm. Poser	12-31-13	W.D.	80,218.12	80,218.12
15	Wm. Poser	12-31-13	W.D.	80,218.12	80,218.12
16	Wm. Poser & Wife	12-31-13	W.D.	80,218.12	80,218.12
17	Wm. Poser & Wife	12-31-13	W.D.	80,218.12	80,218.12
18	Wm. Poser & Wife	12-31-13	W.D.	80,218.12	80,218.12
19	Olympia Terminal Ry. Co.	12-31-13	W.D.	80,218.12	80,218.12
20	Olympia Terminal Ry. Co.	12-31-13	W.D.	80,218.12	80,218.12
21	Olympia Terminal Ry. Co.	12-31-13	W.D.	80,218.12	80,218.12
22	Wm. Poser	12-31-13	W.D.	80,218.12	80,218.12
23	Wm. Poser & Wife	12-31-13	W.D.	80,218.12	80,218.12
24	Olympia Terminal Ry. Co.	12-31-13	W.D.	80,218.12	80,218.12



State of Illinois
County of Cook

I, the undersigned, officer of the Chicago, Milwaukee & St. Paul Railway Co. do hereby certify that this is a correct map, in a series of...
Supplemental sheets, of said railroad, from survey station...
Prepared from the records of said company.

A.C. Lodge
Valuation Engineer

W.A.M. Sperry
Assistant to President

Subscribed and sworn to before me this... day of... 1916
Notary Public in and for the County of Cook

CHEHALIS WESTERN RR CEASED TO OPERATE JULY 92, RECLASSIFIED TO NON-OP 1-1-93

RIGHT OF WAY AND TRACK MAP
CHICAGO, MILWAUKEE & ST. PAUL RY. CO.
OPERATED BY THE
CHICAGO, MILWAUKEE & ST. PAUL RY. CO.

COAST DIVISION MAYTOWN TO RAYMOND
STATION - 10+04.1 TO STATION 201+26.5

SCALE: 1" = 400 FT. JUNE 30 1916
OFFICE OF VALUATION ENGINEER
CHICAGO, ILLINOIS

TE 3-1

V. WASH. 20