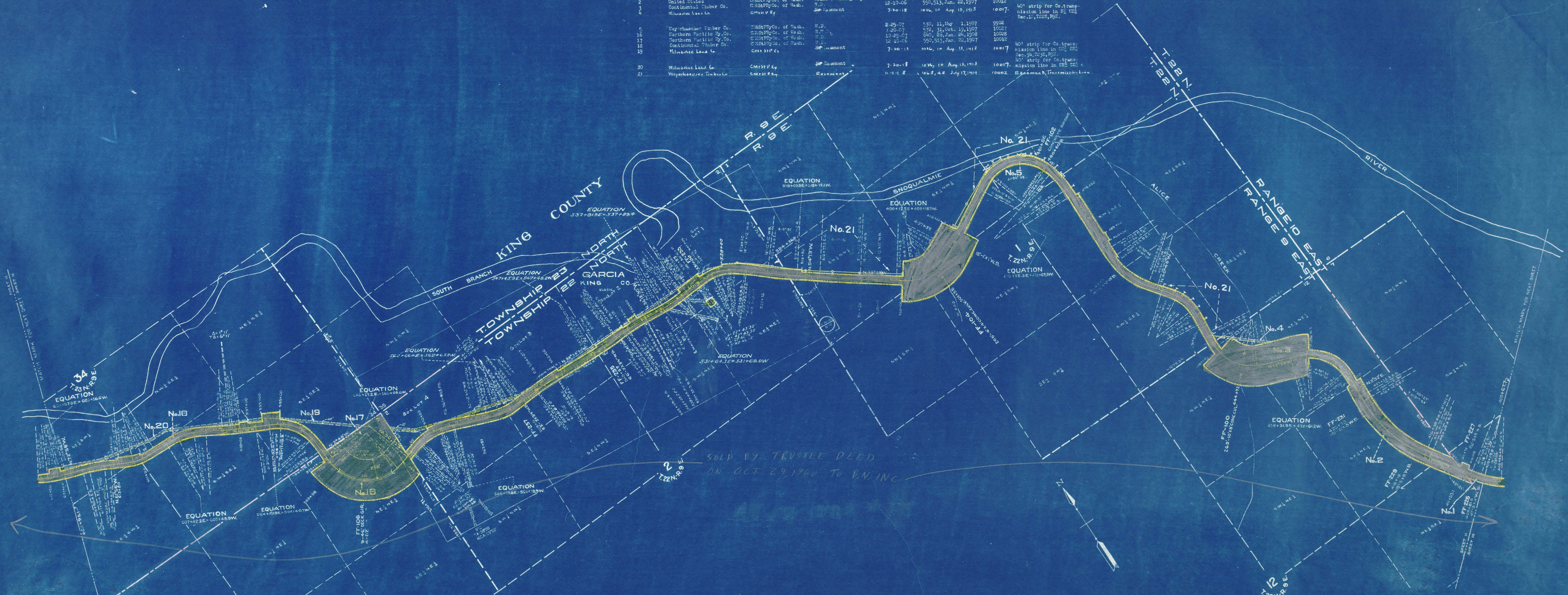


PARCEL NUMBER	GRANTOR	GRANTEE	INSTRUMENT	DATE	RECORD	SUBSTANTIAL NO.	REMARKS
1	Weyerhaeuser Timber Co.	Chicago Ry. Co. of Wash.	W.D.	1-25-07	530, 11, May 1, 1907	9902	
2	United States	Chicago Ry. Co. of Wash.	Grant & Filing Map	11-17-08		10017	Act of Congress 3-3-75.
3	Continental Timber Co.	Chicago Ry. Co. of Wash.	W.D.	12-19-08	550, 513, Jan. 22, 1907	10012	
4	Milwaukee Land Co.	Chicago Ry. Co. of Wash.	W.D.	7-20-18	1016, 10 Aug. 13, 1918	10017	40' strip for Co. transmission line in R. 102, Sec. 17, T22N, R9E.
5	Weyerhaeuser Timber Co.	Chicago Ry. Co. of Wash.	W.D.	2-25-07	530, 11, May 1, 1907	9902	
16	Northern Pacific Ry. Co.	Chicago Ry. Co. of Wash.	W.D.	7-20-07	572, 31, Oct. 19, 1907	10027	
17	Northern Pacific Ry. Co.	Chicago Ry. Co. of Wash.	W.D.	10-29-07	580, 59, Jan. 22, 1907	10028	
18	Continental Timber Co.	Chicago Ry. Co. of Wash.	W.D.	12-19-08	550, 513, Jan. 22, 1907	10012	
19	Milwaukee Land Co.	Chicago Ry. Co. of Wash.	W.D.	7-20-18	1016, 10 Aug. 13, 1918	10017	40' strip for Co. transmission line in R. 102, Sec. 17, T22N, R9E.
20	Milwaukee Land Co.	Chicago Ry. Co. of Wash.	W.D.	7-20-18	1016, 10 Aug. 13, 1918	10017	40' strip for Co. transmission line in R. 102, Sec. 17, T22N, R9E.
21	Weyerhaeuser Timber Co.	Chicago Ry. Co. of Wash.	W.D.	11-1-18	1018, 42 July 17, 1918	10002	26666666 Transmission Line.



Sheet No. 11 of 19 sheets of C. M. & St. P. Ry. Co. Main Line from survey station 408+67.7 to survey station 620+98.1

A.E. Lodge
Valuation Engineer

RIGHT OF WAY AND TRACK MAP
CHICAGO, MILWAUKEE & ST. PAUL RY. CO.

OPERATED BY THE
CHICAGO, MILWAUKEE & ST. PAUL RY. CO.
COAST DIVISION MAIN LINE
STATION 408+67.7 TO STATION 620+98.1
SCALE: 1 IN. = 4 MILES JUNE 30, 1918.
OFFICE OF VALUATION ENGINEER
CHICAGO, ILLINOIS.



KING