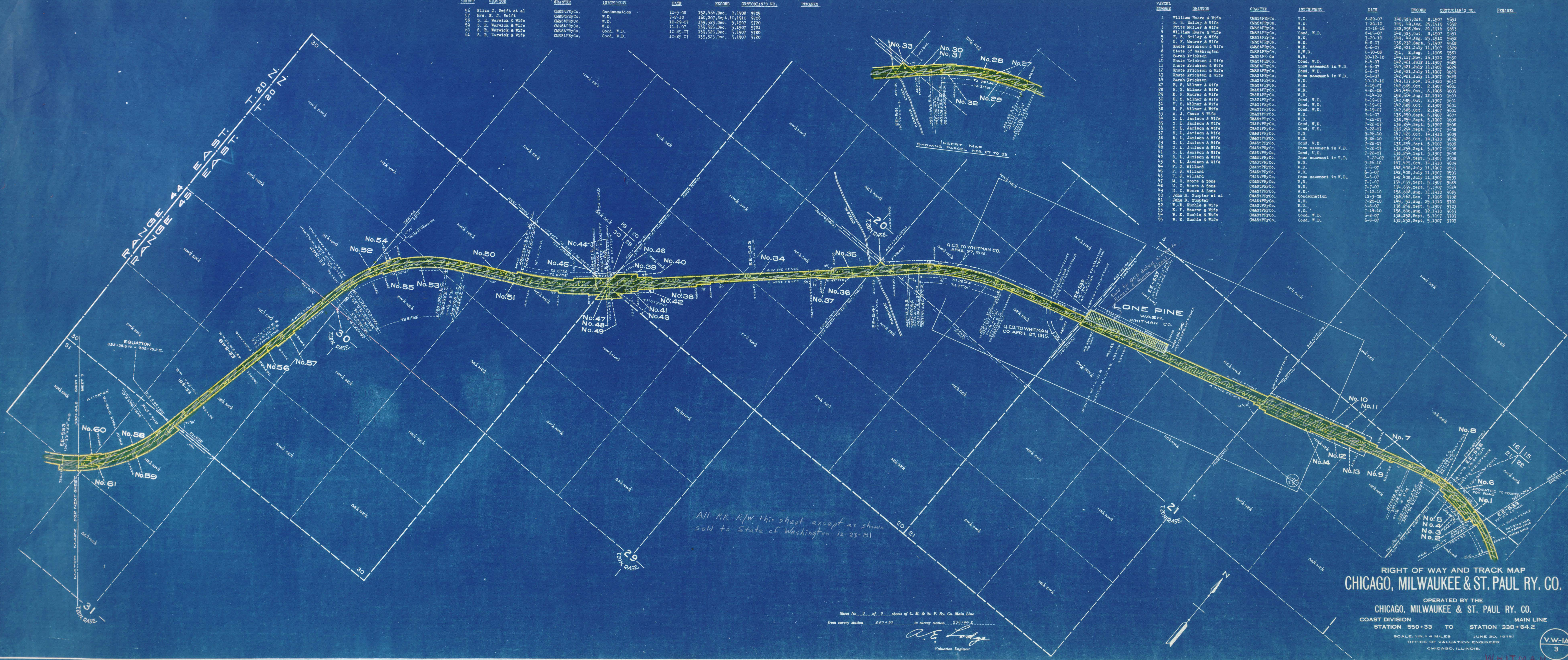


PARCEL NUMBER	GRANTOR	GRANTEE	INSTRUMENT	DATE	RECORD	QUADRIANT'S NO.	REMARKS
56	Wm. J. Swift et al	CM&STP Ry. Co.	Condemnation	11-5-08	152,465, Dec. 7, 1908	9705	
57	Wm. E. Swift	CM&STP Ry. Co.	W.D.	7-2-10	160,207, Sept. 10, 1910	9706	
58	S. E. Warwick & Wife	CM&STP Ry. Co.	W.D.	10-23-07	139,921, Dec. 5, 1907	9720	
59	S. E. Warwick & Wife	CM&STP Ry. Co.	W.D.	11-1-07	139,926, Dec. 5, 1907	9721	
60	S. E. Warwick & Wife	CM&STP Ry. Co.	Cond. W.D.	10-25-07	139,923, Dec. 5, 1907	9720	
61	S. E. Warwick & Wife	CM&STP Ry. Co.	Cond. W.D.	10-25-07	133,953, Dec. 5, 1907	9720	

PARCEL NUMBER	GRANTOR	GRANTEE	INSTRUMENT	DATE	RECORD	QUADRIANT'S NO.	REMARKS
1	William Hoars & Wife	CM&STP Ry. Co.	W.D.	8-29-07	142,583, Oct. 2, 1907	9651	
2	H. S. Milner & Wife	CM&STP Ry. Co.	W.D.	7-20-10	140,749, Aug. 20, 1910	9652	
3	Fritz Muller & Wife	CM&STP Ry. Co.	W.D.	10-16-16	162,236, Nov. 1, 1916	9653	
4	William Hoars & Wife	CM&STP Ry. Co.	Cond. W.D.	6-2-07	142,583, Oct. 2, 1907	9651	
5	H. S. Milner & Wife	CM&STP Ry. Co.	W.D.	7-20-10	140,749, Aug. 20, 1910	9652	
6	E. F. Maurer & Wife	CM&STP Ry. Co.	W.D.	6-2-07	132,832, Sept. 5, 1907	9648	
7	Knute Erickson & Wife	CM&STP Ry. Co.	W.D.	6-2-07	142,421, July 11, 1907	9629	
8	Sarah Erickson	CM&STP Ry. Co.	W.D.	6-2-08	151,117, Nov. 1, 1908	9621	
9	Knute Erickson & Wife	CM&STP Ry. Co.	W.D.	10-12-10	149,117, Nov. 10, 1910	9630	
10	Knute Erickson & Wife	CM&STP Ry. Co.	Cond. W.D.	6-2-07	142,421, July 11, 1907	9629	
11	Knute Erickson & Wife	CM&STP Ry. Co.	Snow easement in W.D.	6-2-07	142,421, July 11, 1907	9629	
12	Knute Erickson & Wife	CM&STP Ry. Co.	Cond. W.D.	6-2-07	142,421, July 11, 1907	9629	
13	Knute Erickson & Wife	CM&STP Ry. Co.	Snow easement in W.D.	6-2-07	142,421, July 11, 1907	9629	
14	Sarah Erickson	CM&STP Ry. Co.	W.D.	10-12-10	149,117, Nov. 10, 1910	9630	
15	H. S. Milner & Wife	CM&STP Ry. Co.	W.D.	6-19-07	142,585, Oct. 2, 1907	9601	
16	H. S. Milner & Wife	CM&STP Ry. Co.	W.D.	9-26-06	140,454, Oct. 6, 1906	9607	
17	E. F. Maurer & Wife	CM&STP Ry. Co.	W.D.	7-14-10	156,604, Aug. 12, 1910	9604	
18	H. S. Milner & Wife	CM&STP Ry. Co.	Cond. W.D.	6-19-07	142,585, Oct. 2, 1907	9601	
19	H. S. Milner & Wife	CM&STP Ry. Co.	Cond. W.D.	6-19-07	142,585, Oct. 2, 1907	9601	
20	H. S. Milner & Wife	CM&STP Ry. Co.	Cond. W.D.	6-19-07	142,585, Oct. 2, 1907	9601	
21	H. S. Milner & Wife	CM&STP Ry. Co.	Cond. W.D.	6-19-07	142,585, Oct. 2, 1907	9601	
22	A. J. Chase & Wife	CM&STP Ry. Co.	W.D.	7-1-07	136,920, Sept. 5, 1907	9597	
23	S. L. Jamison & Wife	CM&STP Ry. Co.	W.D.	7-22-07	134,294, Sept. 5, 1907	9598	
24	S. L. Jamison & Wife	CM&STP Ry. Co.	Cond. W.D.	7-22-07	134,294, Sept. 5, 1907	9598	
25	S. L. Jamison & Wife	CM&STP Ry. Co.	Cond. W.D.	7-22-07	134,294, Sept. 5, 1907	9598	
26	S. L. Jamison & Wife	CM&STP Ry. Co.	Cond. W.D.	7-22-07	134,294, Sept. 5, 1907	9598	
27	S. L. Jamison & Wife	CM&STP Ry. Co.	Cond. W.D.	7-22-07	134,294, Sept. 5, 1907	9598	
28	S. L. Jamison & Wife	CM&STP Ry. Co.	Cond. W.D.	7-22-07	134,294, Sept. 5, 1907	9598	
29	S. L. Jamison & Wife	CM&STP Ry. Co.	Cond. W.D.	7-22-07	134,294, Sept. 5, 1907	9598	
30	S. L. Jamison & Wife	CM&STP Ry. Co.	Cond. W.D.	7-22-07	134,294, Sept. 5, 1907	9598	
31	S. L. Jamison & Wife	CM&STP Ry. Co.	Cond. W.D.	7-22-07	134,294, Sept. 5, 1907	9598	
32	S. L. Jamison & Wife	CM&STP Ry. Co.	Cond. W.D.	7-22-07	134,294, Sept. 5, 1907	9598	
33	S. L. Jamison & Wife	CM&STP Ry. Co.	Cond. W.D.	7-22-07	134,294, Sept. 5, 1907	9598	
34	F. J. Willard	CM&STP Ry. Co.	W.D.	6-2-07	142,408, July 11, 1907	9593	
35	F. J. Willard	CM&STP Ry. Co.	W.D.	6-2-07	142,408, July 11, 1907	9593	
36	F. J. Willard	CM&STP Ry. Co.	W.D.	6-2-07	142,408, July 11, 1907	9593	
37	M. C. Moore & Sons	CM&STP Ry. Co.	W.D.	7-7-07	134,619, Sept. 5, 1907	9584	
38	M. C. Moore & Sons	CM&STP Ry. Co.	W.D.	7-7-07	134,619, Sept. 5, 1907	9584	
39	M. C. Moore & Sons	CM&STP Ry. Co.	W.D.	7-7-07	134,619, Sept. 5, 1907	9584	
40	John B. Sumpster	CM&STP Ry. Co.	W.D.	12-1-10	156,604, Aug. 12, 1910	9585	
41	John B. Sumpster	CM&STP Ry. Co.	W.D.	12-1-10	156,604, Aug. 12, 1910	9585	
42	John B. Sumpster	CM&STP Ry. Co.	W.D.	12-1-10	156,604, Aug. 12, 1910	9585	
43	John B. Sumpster	CM&STP Ry. Co.	W.D.	12-1-10	156,604, Aug. 12, 1910	9585	
44	John B. Sumpster	CM&STP Ry. Co.	W.D.	12-1-10	156,604, Aug. 12, 1910	9585	
45	John B. Sumpster	CM&STP Ry. Co.	W.D.	12-1-10	156,604, Aug. 12, 1910	9585	
46	John B. Sumpster	CM&STP Ry. Co.	W.D.	12-1-10	156,604, Aug. 12, 1910	9585	
47	John B. Sumpster	CM&STP Ry. Co.	W.D.	12-1-10	156,604, Aug. 12, 1910	9585	
48	John B. Sumpster	CM&STP Ry. Co.	W.D.	12-1-10	156,604, Aug. 12, 1910	9585	
49	John B. Sumpster	CM&STP Ry. Co.	W.D.	12-1-10	156,604, Aug. 12, 1910	9585	
50	John B. Sumpster	CM&STP Ry. Co.	W.D.	12-1-10	156,604, Aug. 12, 1910	9585	
51	John B. Sumpster	CM&STP Ry. Co.	W.D.	12-1-10	156,604, Aug. 12, 1910	9585	
52	W. E. Kuchle & Wife	CM&STP Ry. Co.	W.D.	6-8-07	138,822, Sept. 5, 1907	9703	
53	W. E. Kuchle & Wife	CM&STP Ry. Co.	W.D.	6-8-07	138,822, Sept. 5, 1907	9703	
54	W. E. Kuchle & Wife	CM&STP Ry. Co.	W.D.	6-8-07	138,822, Sept. 5, 1907	9703	
55	W. E. Kuchle & Wife	CM&STP Ry. Co.	W.D.	6-8-07	138,822, Sept. 5, 1907	9703	
56	W. E. Kuchle & Wife	CM&STP Ry. Co.	W.D.	6-8-07	138,822, Sept. 5, 1907	9703	



All RR R/W this sheet except as shown sold to State of Washington 12-23-81

Sheet No. 3 of 3 sheets of C. M. & St. P. Ry. Co. Main Line
 from survey station 550+33 to survey station 338+64.2
 A. E. Lodge
 Valuation Engineer

RIGHT OF WAY AND TRACK MAP
CHICAGO, MILWAUKEE & ST. PAUL RY. CO.
 OPERATED BY THE
CHICAGO, MILWAUKEE & ST. PAUL RY. CO.
 COAST DIVISION MAIN LINE
 STATION 550+33 TO STATION 338+64.2
 SCALE: 1 IN. = 4 MILES JUNE 30, 1918
 OFFICE OF VALUATION ENGINEER
 CHICAGO, ILLINOIS.
 V.W.-1A
 3