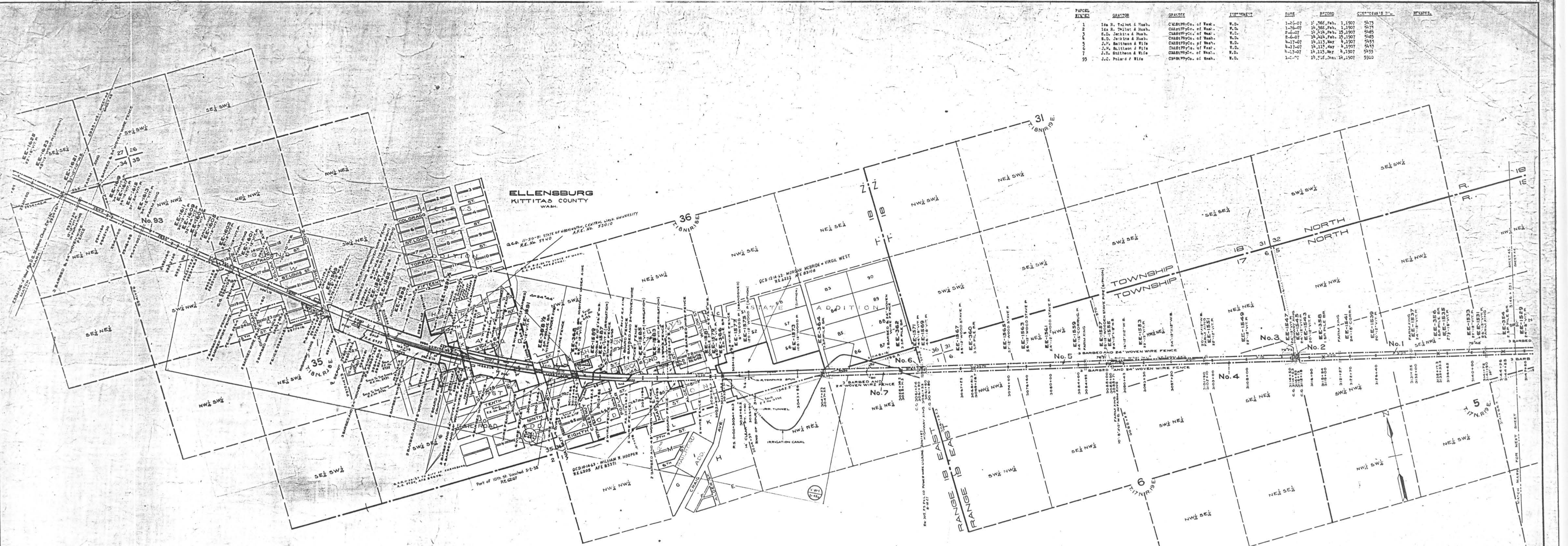


PAPERS	GRANTOR	GRANTEE	INSTRUMENT	DATE	RECORD	CITY OF CHICAGO'S OFFICE	REMARKS
1	Ira R. Talbot & Husb.	CHICAGO RY. CO. of Wash.	W.D.	1-25-07	17,786, Feb. 1, 1907	5473	
2	Ira R. Talbot & Husb.	CHICAGO RY. CO. of Wash.	W.D.	1-26-07	18,586, Feb. 1, 1907	5474	
3	E.D. Jettie & Husb.	CHICAGO RY. CO. of Wash.	W.D.	2-6-07	18,514, Feb. 15, 1907	5465	
4	E.D. Jettie & Husb.	CHICAGO RY. CO. of Wash.	W.D.	2-6-07	18,514, Feb. 15, 1907	5465	
5	J.P. Mathison & Wife	CHICAGO RY. CO. of Wash.	W.D.	4-17-07	18,113, May 4, 1907	5475	
6	J.P. Mathison & Wife	CHICAGO RY. CO. of Wash.	W.D.	4-17-07	18,113, May 4, 1907	5475	
7	J.P. Mathison & Wife	CHICAGO RY. CO. of Wash.	W.D.	4-17-07	18,113, May 4, 1907	5475	
8	J.P. Mathison & Wife	CHICAGO RY. CO. of Wash.	W.D.	4-17-07	18,113, May 4, 1907	5475	
9	J.C. Polard & Wife	CHICAGO RY. CO. of Wash.	W.D.	1-1-07	18,115, May 14, 1907	5410	



**RIGHT OF WAY AND TRACK MAP  
CHICAGO, MILWAUKEE & ST. PAUL RY. CO.**

OPERATED BY THE  
**CHICAGO, MILWAUKEE & ST. PAUL RY. CO.**  
COLUMBIA DIVISION MAIN LINE  
STATION 3146+25.1 TO STATION 52334+05.1

Sheet No. 45 of 45 sheets of C. M. & St. P. Ry. Co. Main Line  
from survey station 3146+25.1 to survey station 52334+05.1  
*A.E. Lodge*  
Valuation Engineer

SCALE: 1 IN. = 400 FT. JUNE 20, 1912  
OFFICE OF VALUATION ENGINEER  
CHICAGO, ILLINOIS.