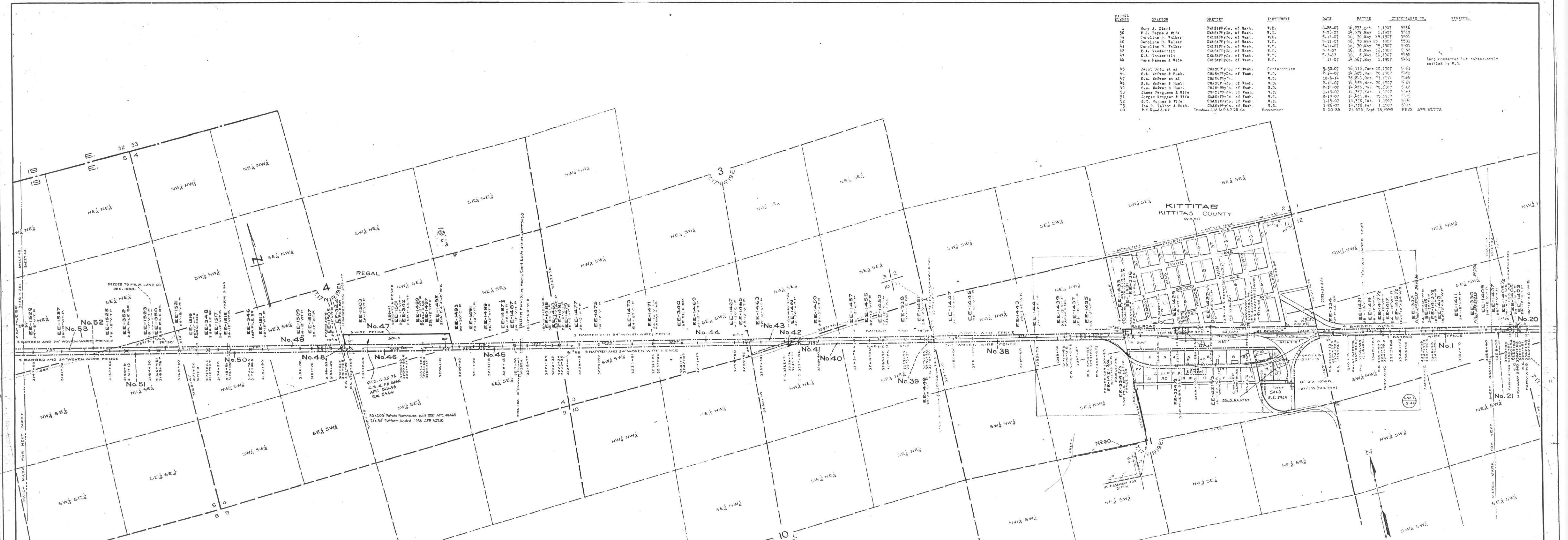


PANEL NUMBER	GRANTOR	GRantee	INSTRUMENT	DATE	RECORD	CHITTIKAS NO.	REMARKS
1	Harry A. Clark	CM&STP Ry. Co. of Wash.	W.D.	6-28-07	16,291, Oct. 1, 1907	9786	
2	E.A. Taylor & Wife	CM&STP Ry. Co. of Wash.	W.D.	7-25-07	16,292, May 1, 1907	9787	
3	Caroline B. Walker	CM&STP Ry. Co. of Wash.	W.D.	8-11-07	16,293, May 25, 1907	9788	
4	Caroline B. Walker	CM&STP Ry. Co. of Wash.	W.D.	9-11-07	16,294, May 25, 1907	9789	
5	Caroline B. Walker	CM&STP Ry. Co. of Wash.	W.D.	9-11-07	16,295, May 25, 1907	9790	
6	E.A. Vandenberg	CM&STP Ry. Co. of Wash.	W.D.	9-11-07	16,296, May 25, 1907	9791	
7	E.A. Vandenberg	CM&STP Ry. Co. of Wash.	W.D.	9-11-07	16,297, May 25, 1907	9792	
8	E.A. Vandenberg	CM&STP Ry. Co. of Wash.	W.D.	9-11-07	16,298, May 25, 1907	9793	
9	E.A. Vandenberg	CM&STP Ry. Co. of Wash.	W.D.	9-11-07	16,299, May 25, 1907	9794	
10	E.A. Vandenberg	CM&STP Ry. Co. of Wash.	W.D.	9-11-07	16,300, May 25, 1907	9795	
11	E.A. Vandenberg	CM&STP Ry. Co. of Wash.	W.D.	9-11-07	16,301, May 25, 1907	9796	
12	E.A. Vandenberg	CM&STP Ry. Co. of Wash.	W.D.	9-11-07	16,302, May 25, 1907	9797	
13	E.A. Vandenberg	CM&STP Ry. Co. of Wash.	W.D.	9-11-07	16,303, May 25, 1907	9798	
14	E.A. Vandenberg	CM&STP Ry. Co. of Wash.	W.D.	9-11-07	16,304, May 25, 1907	9799	
15	E.A. Vandenberg	CM&STP Ry. Co. of Wash.	W.D.	9-11-07	16,305, May 25, 1907	9800	
16	E.A. Vandenberg	CM&STP Ry. Co. of Wash.	W.D.	9-11-07	16,306, May 25, 1907	9801	
17	E.A. Vandenberg	CM&STP Ry. Co. of Wash.	W.D.	9-11-07	16,307, May 25, 1907	9802	
18	E.A. Vandenberg	CM&STP Ry. Co. of Wash.	W.D.	9-11-07	16,308, May 25, 1907	9803	
19	E.A. Vandenberg	CM&STP Ry. Co. of Wash.	W.D.	9-11-07	16,309, May 25, 1907	9804	
20	E.A. Vandenberg	CM&STP Ry. Co. of Wash.	W.D.	9-11-07	16,310, May 25, 1907	9805	
21	E.A. Vandenberg	CM&STP Ry. Co. of Wash.	W.D.	9-11-07	16,311, May 25, 1907	9806	
22	E.A. Vandenberg	CM&STP Ry. Co. of Wash.	W.D.	9-11-07	16,312, May 25, 1907	9807	
23	E.A. Vandenberg	CM&STP Ry. Co. of Wash.	W.D.	9-11-07	16,313, May 25, 1907	9808	
24	E.A. Vandenberg	CM&STP Ry. Co. of Wash.	W.D.	9-11-07	16,314, May 25, 1907	9809	
25	E.A. Vandenberg	CM&STP Ry. Co. of Wash.	W.D.	9-11-07	16,315, May 25, 1907	9810	
26	E.A. Vandenberg	CM&STP Ry. Co. of Wash.	W.D.	9-11-07	16,316, May 25, 1907	9811	
27	E.A. Vandenberg	CM&STP Ry. Co. of Wash.	W.D.	9-11-07	16,317, May 25, 1907	9812	
28	E.A. Vandenberg	CM&STP Ry. Co. of Wash.	W.D.	9-11-07	16,318, May 25, 1907	9813	
29	E.A. Vandenberg	CM&STP Ry. Co. of Wash.	W.D.	9-11-07	16,319, May 25, 1907	9814	
30	E.A. Vandenberg	CM&STP Ry. Co. of Wash.	W.D.	9-11-07	16,320, May 25, 1907	9815	
31	E.A. Vandenberg	CM&STP Ry. Co. of Wash.	W.D.	9-11-07	16,321, May 25, 1907	9816	
32	E.A. Vandenberg	CM&STP Ry. Co. of Wash.	W.D.	9-11-07	16,322, May 25, 1907	9817	
33	E.A. Vandenberg	CM&STP Ry. Co. of Wash.	W.D.	9-11-07	16,323, May 25, 1907	9818	
34	E.A. Vandenberg	CM&STP Ry. Co. of Wash.	W.D.	9-11-07	16,324, May 25, 1907	9819	
35	E.A. Vandenberg	CM&STP Ry. Co. of Wash.	W.D.	9-11-07	16,325, May 25, 1907	9820	
36	E.A. Vandenberg	CM&STP Ry. Co. of Wash.	W.D.	9-11-07	16,326, May 25, 1907	9821	
37	E.A. Vandenberg	CM&STP Ry. Co. of Wash.	W.D.	9-11-07	16,327, May 25, 1907	9822	
38	E.A. Vandenberg	CM&STP Ry. Co. of Wash.	W.D.	9-11-07	16,328, May 25, 1907	9823	
39	E.A. Vandenberg	CM&STP Ry. Co. of Wash.	W.D.	9-11-07	16,329, May 25, 1907	9824	
40	E.A. Vandenberg	CM&STP Ry. Co. of Wash.	W.D.	9-11-07	16,330, May 25, 1907	9825	
41	E.A. Vandenberg	CM&STP Ry. Co. of Wash.	W.D.	9-11-07	16,331, May 25, 1907	9826	
42	E.A. Vandenberg	CM&STP Ry. Co. of Wash.	W.D.	9-11-07	16,332, May 25, 1907	9827	
43	E.A. Vandenberg	CM&STP Ry. Co. of Wash.	W.D.	9-11-07	16,333, May 25, 1907	9828	
44	E.A. Vandenberg	CM&STP Ry. Co. of Wash.	W.D.	9-11-07	16,334, May 25, 1907	9829	
45	E.A. Vandenberg	CM&STP Ry. Co. of Wash.	W.D.	9-11-07	16,335, May 25, 1907	9830	
46	E.A. Vandenberg	CM&STP Ry. Co. of Wash.	W.D.	9-11-07	16,336, May 25, 1907	9831	
47	E.A. Vandenberg	CM&STP Ry. Co. of Wash.	W.D.	9-11-07	16,337, May 25, 1907	9832	
48	E.A. Vandenberg	CM&STP Ry. Co. of Wash.	W.D.	9-11-07	16,338, May 25, 1907	9833	
49	E.A. Vandenberg	CM&STP Ry. Co. of Wash.	W.D.	9-11-07	16,339, May 25, 1907	9834	
50	E.A. Vandenberg	CM&STP Ry. Co. of Wash.	W.D.	9-11-07	16,340, May 25, 1907	9835	
51	E.A. Vandenberg	CM&STP Ry. Co. of Wash.	W.D.	9-11-07	16,341, May 25, 1907	9836	
52	E.A. Vandenberg	CM&STP Ry. Co. of Wash.	W.D.	9-11-07	16,342, May 25, 1907	9837	
53	E.A. Vandenberg	CM&STP Ry. Co. of Wash.	W.D.	9-11-07	16,343, May 25, 1907	9838	
54	E.A. Vandenberg	CM&STP Ry. Co. of Wash.	W.D.	9-11-07	16,344, May 25, 1907	9839	
55	E.A. Vandenberg	CM&STP Ry. Co. of Wash.	W.D.	9-11-07	16,345, May 25, 1907	9840	
56	E.A. Vandenberg	CM&STP Ry. Co. of Wash.	W.D.	9-11-07	16,346, May 25, 1907	9841	
57	E.A. Vandenberg	CM&STP Ry. Co. of Wash.	W.D.	9-11-07	16,347, May 25, 1907	9842	
58	E.A. Vandenberg	CM&STP Ry. Co. of Wash.	W.D.	9-11-07	16,348, May 25, 1907	9843	
59	E.A. Vandenberg	CM&STP Ry. Co. of Wash.	W.D.	9-11-07	16,349, May 25, 1907	9844	
60	E.A. Vandenberg	CM&STP Ry. Co. of Wash.	W.D.	9-11-07	16,350, May 25, 1907	9845	



**RIGHT OF WAY AND TRACK MAP
CHICAGO, MILWAUKEE & ST. PAUL RY. CO.**

OPERATED BY THE
CHICAGO, MILWAUKEE & ST. PAUL RY. CO.

COLUMBIA DIVISION MAIN LINE
STATION 3357+45.1 TO STATION 53146+25.1

SCALE: 1" = 400 FT. JUNE 30, 1918.
OFFICE OF VALUATION ENGINEER
CHICAGO, ILLINOIS.

Sheet No. 44 of 52, Sheets of C. M. & St. P. Ry. Co. Main Line
from survey station 3357+45.1 to survey station 3146+25.1
A. E. Lodge
Valuation Engineer

