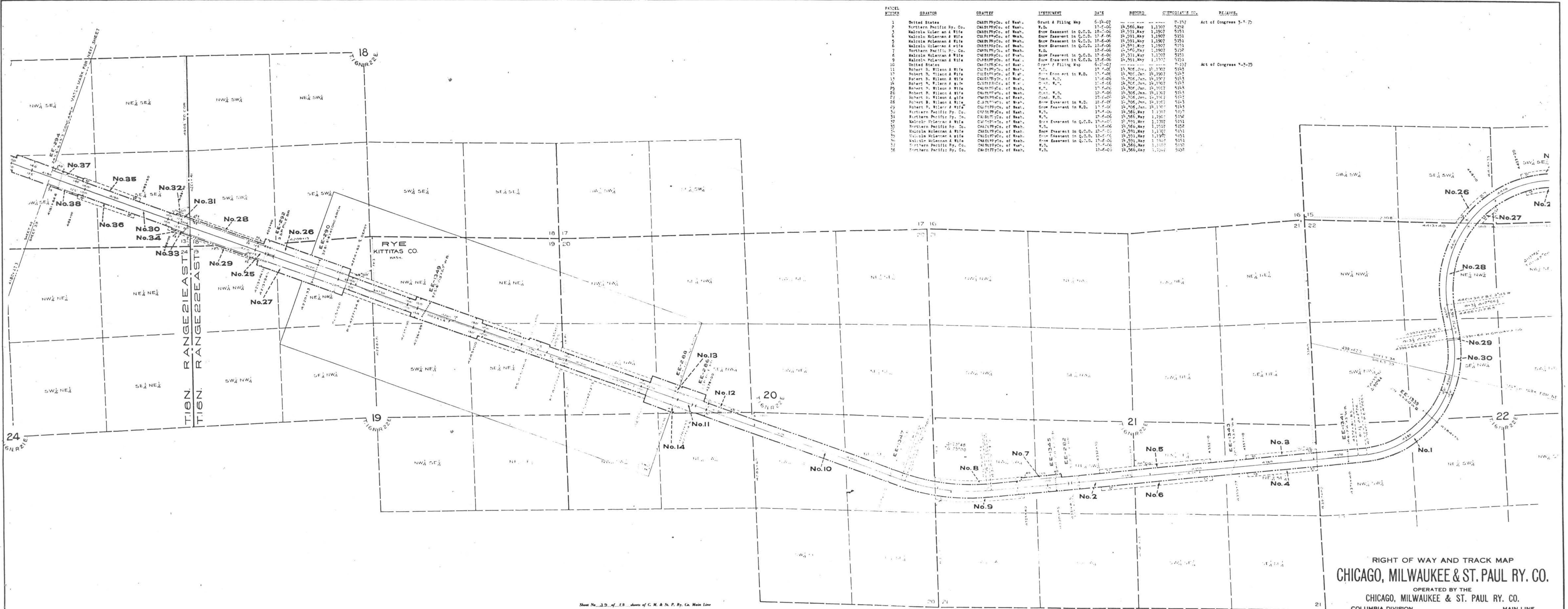


PACEL NUMBER	GRANTOR	GRANTEE	INSTRUMENT	DATE	RECORD	CUSTOMER'S NO.	REMARKS
1	United States	Omaha Ry. Co. of Wash.	Grant & Filing Map	5-19-07		9-157	Act of Congress 5-1-75
2	Northern Pacific Ry. Co.	Omaha Ry. Co. of Wash.	W.D.	11-6-06	14,566, May 1, 1907	5152	
3	Malcolm McLennan & Wife	Omaha Ry. Co. of Wash.	Exec. Assent in Q.C.D.	12-6-06	14,591, May 1, 1907	5151	
4	Malcolm McLennan & Wife	Omaha Ry. Co. of Wash.	Exec. Assent in Q.C.D.	12-6-06	14,591, May 1, 1907	5151	
5	Malcolm McLennan & Wife	Omaha Ry. Co. of Wash.	Exec. Assent in Q.C.D.	12-6-06	14,591, May 1, 1907	5151	
6	Malcolm McLennan & Wife	Omaha Ry. Co. of Wash.	Exec. Assent in Q.C.D.	12-6-06	14,591, May 1, 1907	5151	
7	Northern Pacific Ry. Co.	Omaha Ry. Co. of Wash.	W.D.	12-6-06	14,596, May 1, 1907	5152	
8	Malcolm McLennan & Wife	Omaha Ry. Co. of Wash.	Exec. Assent in Q.C.D.	12-6-06	14,591, May 1, 1907	5151	
9	Malcolm McLennan & Wife	Omaha Ry. Co. of Wash.	Exec. Assent in Q.C.D.	12-6-06	14,591, May 1, 1907	5151	
10	United States	Omaha Ry. Co. of Wash.	Grant & Filing Map	5-19-07		9-157	Act of Congress 5-1-75
11	Robert B. Wilson & Wife	Omaha Ry. Co. of Wash.	W.D.	12-6-06	14,596, May 1, 1907	5152	
12	Robert B. Wilson & Wife	Omaha Ry. Co. of Wash.	Exec. Assent in W.D.	12-6-06	14,596, May 1, 1907	5152	
13	Robert B. Wilson & Wife	Omaha Ry. Co. of Wash.	Cont. W.D.	12-6-06	14,596, May 1, 1907	5152	
14	Robert B. Wilson & Wife	Omaha Ry. Co. of Wash.	Cont. W.D.	12-6-06	14,596, May 1, 1907	5152	
15	Robert B. Wilson & Wife	Omaha Ry. Co. of Wash.	Cont. W.D.	12-6-06	14,596, May 1, 1907	5152	
16	Robert B. Wilson & Wife	Omaha Ry. Co. of Wash.	Cont. W.D.	12-6-06	14,596, May 1, 1907	5152	
17	Robert B. Wilson & Wife	Omaha Ry. Co. of Wash.	Cont. W.D.	12-6-06	14,596, May 1, 1907	5152	
18	Robert B. Wilson & Wife	Omaha Ry. Co. of Wash.	Cont. W.D.	12-6-06	14,596, May 1, 1907	5152	
19	Robert B. Wilson & Wife	Omaha Ry. Co. of Wash.	Cont. W.D.	12-6-06	14,596, May 1, 1907	5152	
20	Robert B. Wilson & Wife	Omaha Ry. Co. of Wash.	Cont. W.D.	12-6-06	14,596, May 1, 1907	5152	
21	Robert B. Wilson & Wife	Omaha Ry. Co. of Wash.	Cont. W.D.	12-6-06	14,596, May 1, 1907	5152	
22	Robert B. Wilson & Wife	Omaha Ry. Co. of Wash.	Cont. W.D.	12-6-06	14,596, May 1, 1907	5152	
23	Robert B. Wilson & Wife	Omaha Ry. Co. of Wash.	Cont. W.D.	12-6-06	14,596, May 1, 1907	5152	
24	Robert B. Wilson & Wife	Omaha Ry. Co. of Wash.	Cont. W.D.	12-6-06	14,596, May 1, 1907	5152	
25	Robert B. Wilson & Wife	Omaha Ry. Co. of Wash.	Cont. W.D.	12-6-06	14,596, May 1, 1907	5152	
26	Robert B. Wilson & Wife	Omaha Ry. Co. of Wash.	Cont. W.D.	12-6-06	14,596, May 1, 1907	5152	
27	Robert B. Wilson & Wife	Omaha Ry. Co. of Wash.	Cont. W.D.	12-6-06	14,596, May 1, 1907	5152	
28	Robert B. Wilson & Wife	Omaha Ry. Co. of Wash.	Cont. W.D.	12-6-06	14,596, May 1, 1907	5152	
29	Robert B. Wilson & Wife	Omaha Ry. Co. of Wash.	Cont. W.D.	12-6-06	14,596, May 1, 1907	5152	
30	Robert B. Wilson & Wife	Omaha Ry. Co. of Wash.	Cont. W.D.	12-6-06	14,596, May 1, 1907	5152	
31	Robert B. Wilson & Wife	Omaha Ry. Co. of Wash.	Cont. W.D.	12-6-06	14,596, May 1, 1907	5152	
32	Robert B. Wilson & Wife	Omaha Ry. Co. of Wash.	Cont. W.D.	12-6-06	14,596, May 1, 1907	5152	
33	Robert B. Wilson & Wife	Omaha Ry. Co. of Wash.	Cont. W.D.	12-6-06	14,596, May 1, 1907	5152	
34	Robert B. Wilson & Wife	Omaha Ry. Co. of Wash.	Cont. W.D.	12-6-06	14,596, May 1, 1907	5152	
35	Robert B. Wilson & Wife	Omaha Ry. Co. of Wash.	Cont. W.D.	12-6-06	14,596, May 1, 1907	5152	
36	Robert B. Wilson & Wife	Omaha Ry. Co. of Wash.	Cont. W.D.	12-6-06	14,596, May 1, 1907	5152	



Sheet No. 39 of 43 sheets of C. M. & St. P. Ry. Co. Main Line
 from survey station 4391+42.3 to survey station 4400+42.3
A. E. Lodge
 Valuation Engineer

RIGHT OF WAY AND TRACK MAP
CHICAGO, MILWAUKEE & ST. PAUL RY. CO.
 OPERATED BY THE
CHICAGO, MILWAUKEE & ST. PAUL RY. CO.
 COLUMBIA DIVISION MAIN LINE
 STATION 4391+62.3 TO STATION 4400+42.3
 SCALE: 1 IN. = 400 FT. JUNE 20, 1918.
 OFFICE OF VALUATION ENGINEER
 CHICAGO, ILLINOIS.

