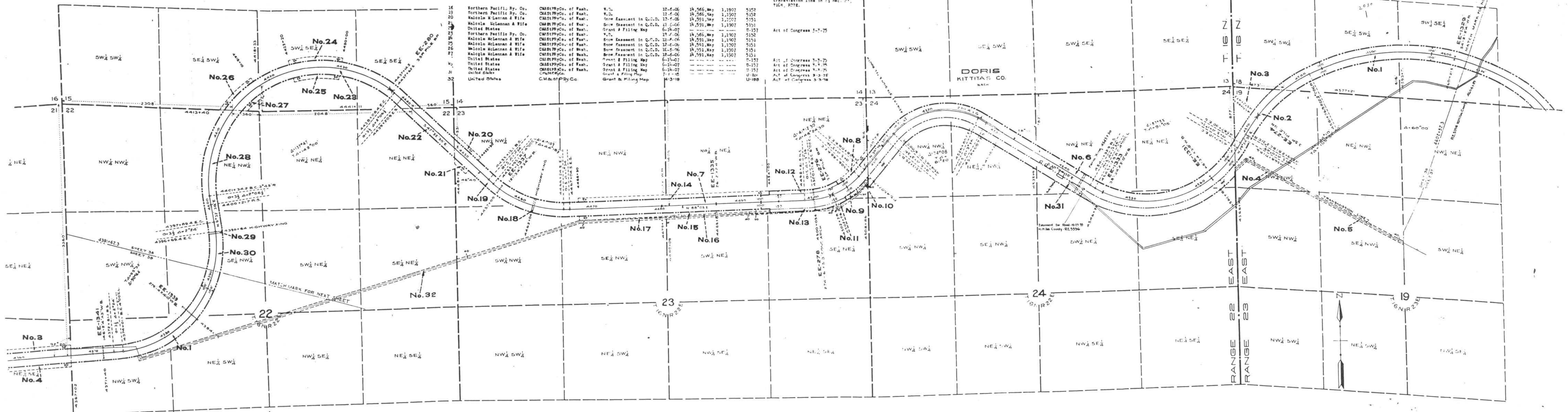


No.	GRANTOR	GRAVEE	INSTRUMENT	DATE	RECORD	CONTRACT NO.	REMARKS
1	United States	Chas. F. McCoy of Wash.	Grant & Filing Map	6-14-07	---	0-157	Act of Congress 3-3-75.
2	Northern Pacific Ry. Co.	Chas. F. McCoy of Wash.	E.D.	12-4-06	14,566, May 1, 1907	5152	
3	Northern Pacific Ry. Co.	Chas. F. McCoy of Wash.	E.D.	7-11-07	16,290, Oct. 1, 1907	5154	
4	H.L. Anderson et al	Chas. F. McCoy of Wash.	Easement	3-14-16	32,222, Apr. 12, 1916	5154	40' strip for Co. transmission line in S1/4 NW1/4 Sec. 19, T16S, R22E.
5	H.L. Anderson et al	Chas. F. McCoy of Wash.	Easement	3-14-16	32,222, Apr. 12, 1916	5154	40' strip for Co. transmission line in NW1/4 NW1/4 Sec. 19, T16S, R22E.
6	United States	Chas. F. McCoy of Wash.	Grant & Filing Map	6-14-07	---	0-157	
7	Northern Pacific Ry. Co.	Chas. F. McCoy of Wash.	E.D.	12-4-06	14,566, May 1, 1907	5152	
8	Malcolm McLennan & wife	Chas. F. McCoy of Wash.	Now Easement in Q.C.D.	12-4-06	14,591, May 1, 1907	5151	
9	Malcolm McLennan & wife	Chas. F. McCoy of Wash.	Now Easement in Q.C.D.	12-4-06	14,591, May 1, 1907	5151	
10	H.L. Anderson et al	Chas. F. McCoy of Wash.	Easement	3-14-16	32,222, Apr. 12, 1916	5154	Irregular strip for Co. transmission line in NW1/4 Sec. 23, T16S, R22E.
11	H.L. Anderson et al	Chas. F. McCoy of Wash.	Easement	3-14-16	32,222, Apr. 12, 1916	5154	Irregular strip for Co. transmission line in NW1/4 Sec. 23, T16S, R22E.
12	Northern Pacific Ry. Co.	Chas. F. McCoy of Wash.	E.D.	12-4-06	14,566, May 1, 1907	5152	
13	Northern Pacific Ry. Co.	Chas. F. McCoy of Wash.	E.D.	12-4-06	14,566, May 1, 1907	5152	
14	Malcolm McLennan & wife	Chas. F. McCoy of Wash.	Now Easement in Q.C.D.	12-4-06	14,591, May 1, 1907	5151	
15	Malcolm McLennan & wife	Chas. F. McCoy of Wash.	Now Easement in Q.C.D.	12-4-06	14,591, May 1, 1907	5151	
16	H.L. Anderson et al	Chas. F. McCoy of Wash.	Easement	3-14-16	32,222, Apr. 12, 1916	5154	Irregular strip for Co. transmission line in NW1/4 Sec. 24, T16S, R22E.
17	H.L. Anderson et al	Chas. F. McCoy of Wash.	Easement	3-14-16	32,222, Apr. 12, 1916	5154	Irregular strip for Co. transmission line in NW1/4 Sec. 24, T16S, R22E.
18	Northern Pacific Ry. Co.	Chas. F. McCoy of Wash.	E.D.	12-4-06	14,566, May 1, 1907	5152	
19	Northern Pacific Ry. Co.	Chas. F. McCoy of Wash.	E.D.	12-4-06	14,566, May 1, 1907	5152	
20	Malcolm McLennan & wife	Chas. F. McCoy of Wash.	Now Easement in Q.C.D.	12-4-06	14,591, May 1, 1907	5151	
21	Malcolm McLennan & wife	Chas. F. McCoy of Wash.	Now Easement in Q.C.D.	12-4-06	14,591, May 1, 1907	5151	
22	United States	Chas. F. McCoy of Wash.	Grant & Filing Map	6-14-07	---	0-157	Act of Congress 3-3-75.
23	Northern Pacific Ry. Co.	Chas. F. McCoy of Wash.	E.D.	12-4-06	14,566, May 1, 1907	5152	
24	Malcolm McLennan & wife	Chas. F. McCoy of Wash.	Now Easement in Q.C.D.	12-4-06	14,591, May 1, 1907	5151	
25	Malcolm McLennan & wife	Chas. F. McCoy of Wash.	Now Easement in Q.C.D.	12-4-06	14,591, May 1, 1907	5151	
26	Malcolm McLennan & wife	Chas. F. McCoy of Wash.	Now Easement in Q.C.D.	12-4-06	14,591, May 1, 1907	5151	
27	United States	Chas. F. McCoy of Wash.	Grant & Filing Map	6-14-07	---	0-157	Act of Congress 3-3-75.
28	Northern Pacific Ry. Co.	Chas. F. McCoy of Wash.	E.D.	12-4-06	14,566, May 1, 1907	5152	
29	Malcolm McLennan & wife	Chas. F. McCoy of Wash.	Now Easement in Q.C.D.	12-4-06	14,591, May 1, 1907	5151	
30	Malcolm McLennan & wife	Chas. F. McCoy of Wash.	Now Easement in Q.C.D.	12-4-06	14,591, May 1, 1907	5151	
31	United States	Chas. F. McCoy of Wash.	Grant & Filing Map	6-14-07	---	0-157	Act of Congress 3-3-75.
32	United States	Chas. F. McCoy of Wash.	Grant & Filing Map	6-14-07	---	0-157	Act of Congress 3-3-75.
33	United States	C.M. & P.D. Co.	Grant & Filing Map	10-3-19	---	0-158	Act of Congress 3-3-75.



RIGHT OF WAY AND TRACK MAP
CHICAGO, MILWAUKEE & ST. PAUL RY. CO.
 OPERATED BY THE
CHICAGO, MILWAUKEE & ST. PAUL RY. CO.
 COLUMBIA DIVISION MAIN LINE
 STATION 4602+82.3 TO STATION 54381+62.3
 SCALE: 1" = 400 FT. JUNE 30, 1918.
 OFFICE OF VALUATION ENGINEER
 CHICAGO, ILLINOIS.

Sheet No. 38 of 38 sheets of C. M. & St. P. Ry. Co. Main Line
 from survey station 4602+82.3 to survey station 4307+62.3
A. E. Lodge
 Valuation Engineer

