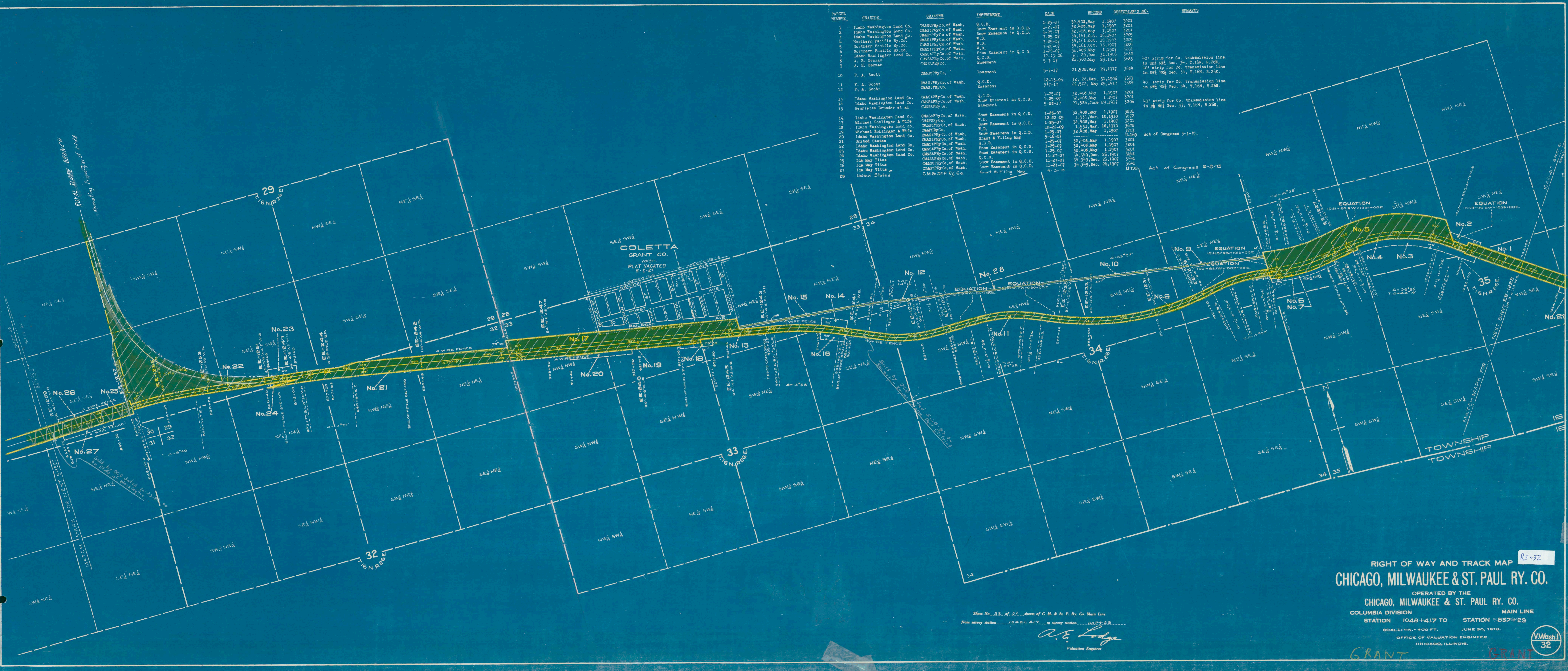


PANEL NUMBER	GRANTOR	GRANTEE	INSTRUMENT	DATE	RECORD	CUSTODIAN'S NO.	REMARKS
1	Idaho Washington Land Co.	CM&STP Ry Co. of Wash.	Q.C.D.	1-25-07	32,408, May 1, 1907	3201	
2	Idaho Washington Land Co.	CM&STP Ry Co. of Wash.	Snow Easement in Q.C.D.	1-25-07	32,408, May 1, 1907	3201	
3	Idaho Washington Land Co.	CM&STP Ry Co. of Wash.	Snow Easement in Q.C.D.	1-25-07	32,408, May 1, 1907	3201	
4	Northern Pacific Ry. Co.	CM&STP Ry Co. of Wash.	W.D.	7-25-07	34,151, Oct. 15, 1907	3205	
5	Northern Pacific Ry. Co.	CM&STP Ry Co. of Wash.	W.D.	7-25-07	34,151, Oct. 15, 1907	3205	
6	Northern Pacific Ry. Co.	CM&STP Ry Co. of Wash.	W.D.	7-25-07	34,151, Oct. 15, 1907	3205	
7	Idaho Washington Land Co.	CM&STP Ry Co. of Wash.	Snow Easement in Q.C.D.	1-25-07	32,408, May 1, 1907	3201	
8	A. H. Duncan	CM&STP Ry Co. of Wash.	Q.C.D.	12-11-06	32,29, Dec. 31, 1906	3222	
9	A. H. Duncan	CM&STP Ry Co. of Wash.	Easement	5-7-17	21,500, May 29, 1917	3283	40' strip for Co. transmission line in S $\frac{1}{2}$ NE $\frac{1}{4}$ Sec. 34, T.16N, R.26E.
10	F. A. Scott	CM&STP Ry Co. of Wash.	Easement	5-7-17	21,500, May 29, 1917	3284	40' strip for Co. transmission line in S $\frac{1}{2}$ NE $\frac{1}{4}$ Sec. 34, T.16N, R.26E.
11	F. A. Scott	CM&STP Ry Co. of Wash.	Q.C.D.	12-13-06	32,25, Dec. 31, 1906	3281	
12	F. A. Scott	CM&STP Ry Co. of Wash.	Easement	5-7-17	21,500, May 29, 1917	3284	40' strip for Co. transmission line in S $\frac{1}{2}$ NE $\frac{1}{4}$ Sec. 34, T.16N, R.26E.
13	Idaho Washington Land Co.	CM&STP Ry Co. of Wash.	Q.C.D.	1-25-07	32,408, May 1, 1907	3201	
14	Idaho Washington Land Co.	CM&STP Ry Co. of Wash.	Snow Easement in Q.C.D.	1-25-07	32,408, May 1, 1907	3201	
15	Henriette Brunder et al	CM&STP Ry Co. of Wash.	Easement	5-22-17	21,585, June 29, 1917	3206	40' strip for Co. transmission line in NE $\frac{1}{4}$ Sec. 33, T.16N, R.26E.
16	Idaho Washington Land Co.	CM&STP Ry Co. of Wash.	Snow Easement in Q.C.D.	1-25-07	32,408, May 1, 1907	3201	
17	Idaho Washington Land Co.	CM&STP Ry Co. of Wash.	W.D.	12-22-09	1,531, Mar. 15, 1910	3272	
18	Idaho Washington Land Co.	CM&STP Ry Co. of Wash.	Snow Easement in Q.C.D.	1-25-07	32,408, May 1, 1907	3201	
19	Michael Bohlinger & Wife	CM&STP Ry Co. of Wash.	W.D.	12-22-09	1,531, Mar. 15, 1910	3272	
20	Idaho Washington Land Co.	CM&STP Ry Co. of Wash.	W.D.	1-25-07	32,408, May 1, 1907	3201	
21	United States	CM&STP Ry Co. of Wash.	Grant & Filing Map	5-16-07		U-169	Act of Congress 3-3-75.
22	Idaho Washington Land Co.	CM&STP Ry Co. of Wash.	Q.C.D.	1-25-07	32,408, May 1, 1907	3201	
23	Idaho Washington Land Co.	CM&STP Ry Co. of Wash.	Snow Easement in Q.C.D.	1-25-07	32,408, May 1, 1907	3201	
24	Idaho Washington Land Co.	CM&STP Ry Co. of Wash.	Snow Easement in Q.C.D.	1-25-07	32,408, May 1, 1907	3201	
25	Ida May Titus	CM&STP Ry Co. of Wash.	Q.C.D.	11-27-07	34,343, Dec. 25, 1907	3241	
26	Ida May Titus	CM&STP Ry Co. of Wash.	Snow Easement in Q.C.D.	11-27-07	34,343, Dec. 25, 1907	3241	
27	Ida May Titus	CM&STP Ry Co. of Wash.	Snow Easement in Q.C.D.	11-27-07	34,343, Dec. 25, 1907	3241	
28	United States	C.M. & St. P. Ry. Co.	Grant & Filing Map	4-3-19		U-199	Act of Congress 3-3-75.



RIGHT OF WAY AND TRACK MAP RS-32
CHICAGO, MILWAUKEE & ST. PAUL RY. CO.
 OPERATED BY THE
CHICAGO, MILWAUKEE & ST. PAUL RY. CO.
 COLUMBIA DIVISION MAIN LINE
 STATION 1048+41.7 TO STATION 5887+29
 SCALE: 1 IN. = 400 FT. JUNE 30, 1918.
 OFFICE OF VALUATION ENGINEER
 CHICAGO, ILLINOIS.

Sheet No. 32 of 32 sheets of C. M. & St. P. Ry. Co. Main Line
 from survey station 1048+41.7 to survey station 5887+29
A. E. Lodge
 Valuation Engineer

