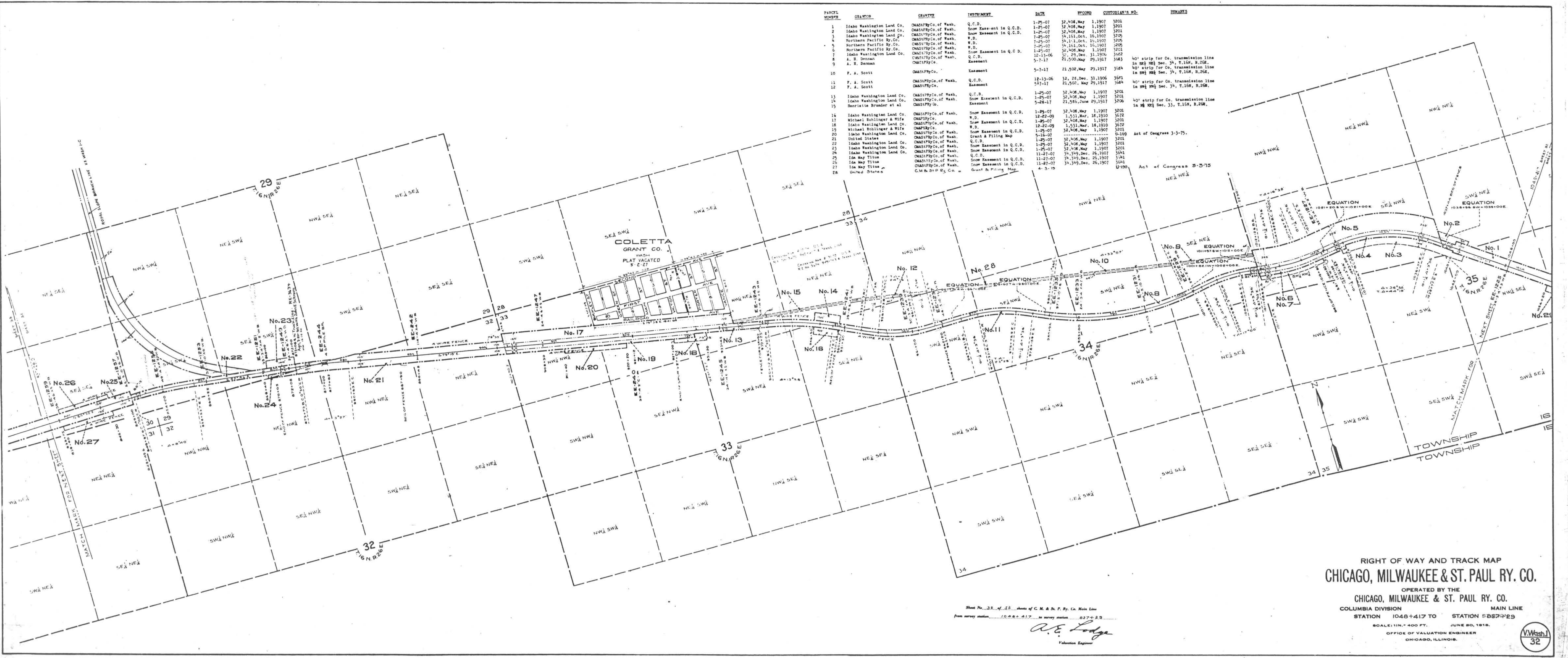


PARCEL NUMBER	GRANTOR	GRANTEE	INSTRUMENT	DATE	RECORD	CUSTOMER'S NO.	REMARKS
1	Idaho Washington Land Co.	CM&STP Ry. Co. of Wash.	Q.C.D.	1-25-07	32,406, May 1, 1907	3201	
2	Idaho Washington Land Co.	CM&STP Ry. Co. of Wash.	Snow Easement in Q.C.D.	1-25-07	32,406, May 1, 1907	3201	
3	Idaho Washington Land Co.	CM&STP Ry. Co. of Wash.	Snow Easement in Q.C.D.	1-25-07	32,406, May 1, 1907	3201	
4	Northern Pacific Ry. Co.	CM&STP Ry. Co. of Wash.	W.D.	7-25-07	34,151, Oct. 15, 1907	3209	
5	Northern Pacific Ry. Co.	CM&STP Ry. Co. of Wash.	W.D.	7-25-07	34,151, Oct. 15, 1907	3209	
6	Northern Pacific Ry. Co.	CM&STP Ry. Co. of Wash.	W.D.	7-25-07	34,151, Oct. 15, 1907	3209	
7	Idaho Washington Land Co.	CM&STP Ry. Co. of Wash.	Snow Easement in Q.C.D.	1-25-07	32,406, May 1, 1907	3201	
8	A. B. Denman	CM&STP Ry. Co. of Wash.	Q.C.D.	12-11-06	31,295, Dec. 31, 1906	3202	
9	A. B. Denman	CM&STP Ry. Co. of Wash.	Easement	5-7-17	21,500, May 29, 1917	3203	40' strip for Co. transmission line in NE1/4 Sec. 34, T.16N, R.20E.
10	F. A. Scott	CM&STP Ry. Co.	Easement	5-7-17	21,502, May 29, 1917	3204	40' strip for Co. transmission line in NE1/4 Sec. 34, T.16N, R.20E.
11	F. A. Scott	CM&STP Ry. Co. of Wash.	Q.C.D.	12-13-06	32,26, Dec. 31, 1906	3205	40' strip for Co. transmission line in NE1/4 Sec. 34, T.16N, R.20E.
12	F. A. Scott	CM&STP Ry. Co.	Easement	5-7-17	21,502, May 29, 1917	3204	40' strip for Co. transmission line in NE1/4 Sec. 34, T.16N, R.20E.
13	Idaho Washington Land Co.	CM&STP Ry. Co. of Wash.	Q.C.D.	1-25-07	32,406, May 1, 1907	3201	
14	Idaho Washington Land Co.	CM&STP Ry. Co. of Wash.	Snow Easement in Q.C.D.	1-25-07	32,406, May 1, 1907	3201	
15	Henriette Brander et al	CM&STP Ry. Co.	Easement	5-26-17	21,585, June 29, 1917	3206	40' strip for Co. transmission line in NE1/4 Sec. 33, T.16N, R.20E.
16	Idaho Washington Land Co.	CM&STP Ry. Co. of Wash.	Snow Easement in Q.C.D.	1-25-07	32,406, May 1, 1907	3201	
17	Michael Bohlinger & Wife	CM&STP Ry. Co.	W.D.	12-22-09	1,531, Mar. 18, 1910	3212	
18	Idaho Washington Land Co.	CM&STP Ry. Co. of Wash.	Snow Easement in Q.C.D.	1-25-07	32,406, May 1, 1907	3201	
19	Michael Bohlinger & Wife	CM&STP Ry. Co.	W.D.	12-22-09	1,531, Mar. 18, 1910	3212	
20	Idaho Washington Land Co.	CM&STP Ry. Co. of Wash.	Snow Easement in Q.C.D.	1-25-07	32,406, May 1, 1907	3201	
21	United States	CM&STP Ry. Co. of Wash.	Grant & Filing Map	5-18-07	0-169		Act of Congress 3-3-75.
22	Idaho Washington Land Co.	CM&STP Ry. Co. of Wash.	Q.C.D.	1-25-07	32,406, May 1, 1907	3201	
23	Idaho Washington Land Co.	CM&STP Ry. Co. of Wash.	Snow Easement in Q.C.D.	1-25-07	32,406, May 1, 1907	3201	
24	Idaho Washington Land Co.	CM&STP Ry. Co. of Wash.	Snow Easement in Q.C.D.	1-25-07	32,406, May 1, 1907	3201	
25	Ida May Titus	CM&STP Ry. Co. of Wash.	Q.C.D.	11-27-07	34,349, Dec. 26, 1907	3241	
26	Ida May Titus	CM&STP Ry. Co. of Wash.	Snow Easement in Q.C.D.	11-27-07	34,349, Dec. 26, 1907	3241	
27	Ida May Titus	CM&STP Ry. Co. of Wash.	Snow Easement in Q.C.D.	11-27-07	34,349, Dec. 26, 1907	3241	
28	United States	C.M.&STP Ry. Co.	Grant & Filing Map	4-3-10	U120		Act of Congress 3-3-75



RIGHT OF WAY AND TRACK MAP  
**CHICAGO, MILWAUKEE & ST. PAUL RY. CO.**

OPERATED BY THE  
**CHICAGO, MILWAUKEE & ST. PAUL RY. CO.**  
 COLUMBIA DIVISION MAIN LINE  
 STATION 1048+417 TO STATION 5887+29

SCALE: 1 IN. = 400 FT. JUNE 20, 1918.  
 OFFICE OF VALUATION ENGINEER  
 CHICAGO, ILLINOIS.

Sheet No. 32 of 32 sheets of C. M. & St. P. Ry. Co. Main Line  
 from survey station 1048+417 to survey station 5887+29  
*A. E. Lodge*  
 Valuation Engineer

