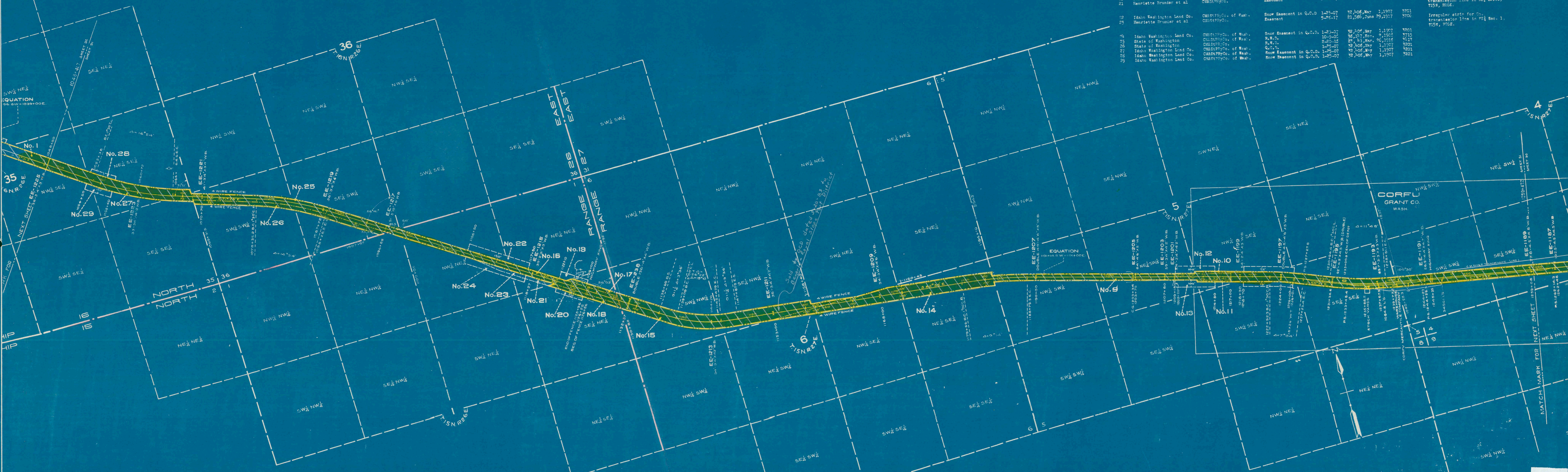


PATENT NUMBER	GRANTOR	GRANTEE	INSTRUMENT	DATE	RECORD	CUSTODIAN'S NO.	REMARKS
9	J.J. Stephens & Wife	CM&STP Ry. Co. of Wash.	W.D.	8-6-07	21,156, Oct. 16, 1907	727	
10	J.J. Stephens & Wife	CM&STP Ry. Co. of Wash.	Cond. W.D.	8-6-07	21,156, Oct. 16, 1907	727	
11	J.J. Stephens & Wife	CM&STP Ry. Co. of Wash.	Cond. W.D.	8-6-07	21,156, Oct. 16, 1907	727	
12	J.J. Stephens & Wife	CM&STP Ry. Co. of Wash.	Snow Easement in W.D.	8-6-07	21,156, Oct. 16, 1907	727	
13	J.J. Stephens & Wife	CM&STP Ry. Co. of Wash.	Snow Easement in W.D.	8-6-07	21,156, Oct. 16, 1907	727	
14	United States	CM&STP Ry. Co. of Wash.	Grant & Filing Map	11-6-07		727	Act of Congress 3-3-75
15	State of Washington	CM&STP Ry. Co. of Wash.	W.D.	8-9-07	25,109, Aug. 6, 1906	728	
16	Northern Pacific Ry. Co.	CM&STP Ry. Co. of Wash.	W.D.	8-9-07	25,109, May 1, 1907	728	
17	Northern Pacific Ry. Co.	CM&STP Ry. Co. of Wash.	W.D.	7-28-07	21,161, Oct. 16, 1907	729	
18	Northern Pacific Ry. Co.	CM&STP Ry. Co. of Wash.	W.D.	7-28-07	21,161, Oct. 16, 1907	729	
19	Idaho Washington Land Co.	CM&STP Ry. Co. of Wash.	Snow Easement in Q.C.D.	1-25-07	22,106, May 1, 1907	730	
20	Idaho Washington Land Co.	CM&STP Ry. Co. of Wash.	Snow Easement in Q.C.D.	1-25-07	22,106, May 1, 1907	730	
21	Henriette Brunner et al.	CM&STP Ry. Co.	Easement	8-24-17	21,286, June 29, 1917	730	Irregular strip for Co. transmission line in NE 1/4 Sec. 1, T15N, R26E.
22	Idaho Washington Land Co.	CM&STP Ry. Co.	Snow Easement in Q.C.D.	1-25-07	22,106, May 1, 1907	730	
23	Henriette Brunner et al.	CM&STP Ry. Co.	Easement	8-24-17	21,286, June 29, 1917	730	Irregular strip for Co. transmission line in NE 1/4 Sec. 1, T15N, R26E.
24	Idaho Washington Land Co.	CM&STP Ry. Co. of Wash.	Snow Easement in Q.C.D.	1-25-07	22,106, May 1, 1907	730	
25	State of Washington	CM&STP Ry. Co. of Wash.	W.D.	10-2-06	26,107, Nov. 2, 1906	731	
26	State of Washington	CM&STP Ry. Co. of Wash.	W.D.	2-20-16	24,111, Mar. 26, 1916	731	
27	Idaho Washington Land Co.	CM&STP Ry. Co. of Wash.	Q.C.D.	1-25-07	22,106, May 1, 1907	731	
28	Idaho Washington Land Co.	CM&STP Ry. Co. of Wash.	Snow Easement in Q.C.D.	1-25-07	22,106, May 1, 1907	731	
29	Idaho Washington Land Co.	CM&STP Ry. Co. of Wash.	Snow Easement in Q.C.D.	1-25-07	22,106, May 1, 1907	731	



RIGHT OF WAY AND TRACK MAP
CHICAGO, MILWAUKEE & ST. PAUL RY. CO.
 OPERATED BY THE
CHICAGO, MILWAUKEE & ST. PAUL RY. CO.
 COLUMBIA DIVISION MAIN LINE
 STATION 1259+47.2 TO STATION 1048+41.7
 SCALE: 1" = 400 FT. JUNE 30, 1918.
 OFFICE OF VALUATION ENGINEER
 CHICAGO, ILLINOIS.

Sheet No. 31 of 32 sheets of C. M. & St. P. Ry. Co. Main Line
 from survey station 1259+47.2 to survey station 1048+41.7
A. E. Lodge
 Valuation Engineer

