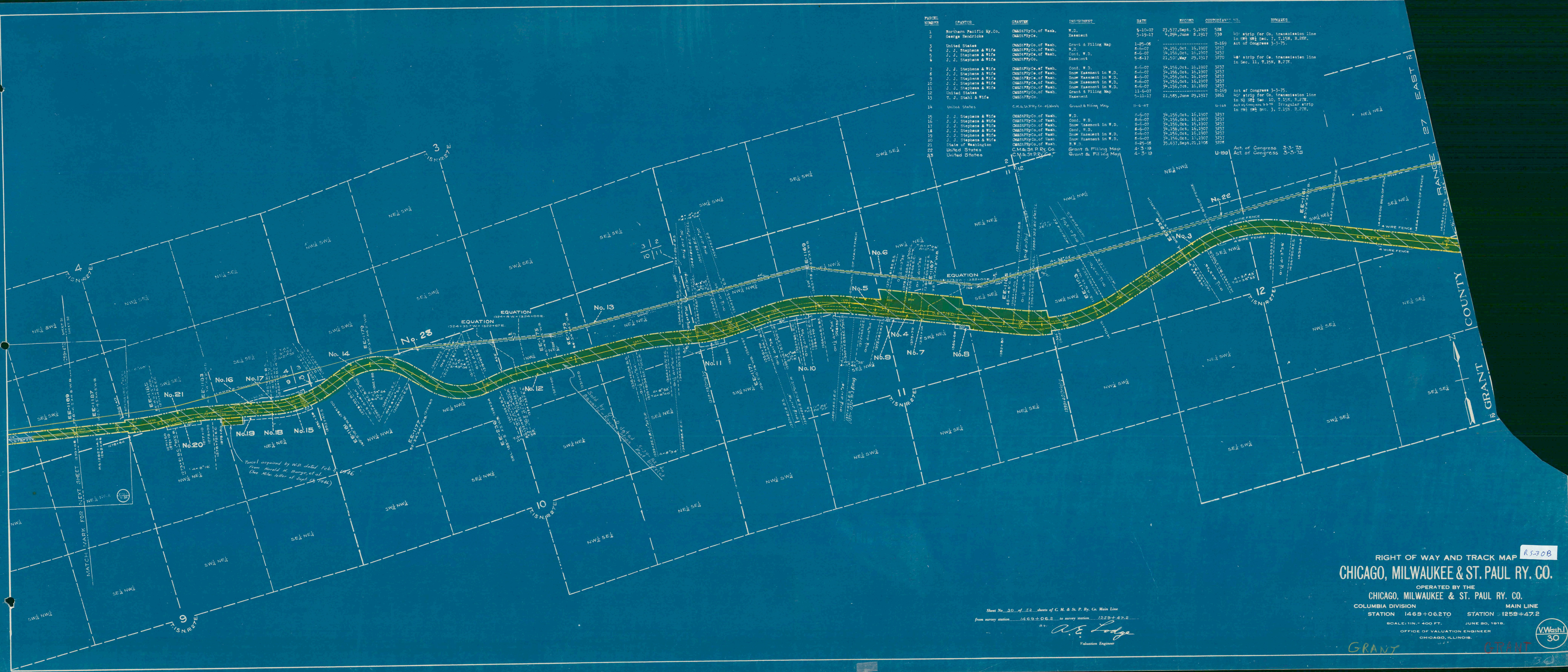


PARCEL NUMBER	GRANTOR	GRANTEE	INSTRUMENT	DATE	BOOK	CUSTOMER NO.	REMARKS
1	Northern Pacific Ry. Co.	CM&StP Ry. Co. of Wash.	W.D.	4-10-07	23,577, Sept. 5, 1907	526	
2	George Hendricks	CM&StP Ry. Co.	Easement	5-19-17	4,294, June 8, 1917	530	40' strip for Co. transmission line in NW 1/4 Sec. 1, T.15N, R.27E, Act of Congress 3-3-75.
3	United States	CM&StP Ry. Co. of Wash.	Grant & Filing Map	1-25-06		U-169	
4	J. J. Stephens & Wife	CM&StP Ry. Co. of Wash.	W.D.	8-6-07	34,156, Oct. 16, 1907	3237	
5	J. J. Stephens & Wife	CM&StP Ry. Co. of Wash.	Cont. W.D.	8-6-07	34,156, Oct. 16, 1907	3237	
6	J. J. Stephens & Wife	CM&StP Ry. Co.	Easement	5-8-17	21,500, May 29, 1917	3270	40' strip for Co. transmission line in Sec. 11, T.15N, R.27E.
7	J. J. Stephens & Wife	CM&StP Ry. Co. of Wash.	Cont. W.D.	8-6-07	34,156, Oct. 16, 1907	3237	
8	J. J. Stephens & Wife	CM&StP Ry. Co. of Wash.	Snow Easement in W.D.	8-6-07	34,156, Oct. 16, 1907	3237	
9	J. J. Stephens & Wife	CM&StP Ry. Co. of Wash.	Snow Easement in W.D.	8-6-07	34,156, Oct. 16, 1907	3237	
10	J. J. Stephens & Wife	CM&StP Ry. Co. of Wash.	Snow Easement in W.D.	8-6-07	34,156, Oct. 16, 1907	3237	
11	J. J. Stephens & Wife	CM&StP Ry. Co. of Wash.	Snow Easement in W.D.	8-6-07	34,156, Oct. 16, 1907	3237	
12	United States	CM&StP Ry. Co. of Wash.	Grant & Filing Map	11-6-07		U-169	Act of Congress 3-3-75.
13	T. J. Stahl & Wife	CM&StP Ry. Co.	Easement	5-11-17	21,585, June 29, 1917	3261	40' strip for Co. transmission line in NW 1/4 Sec. 10, T.15N, R.27E, Act of Congress 3-3-75.
14	United States	CM&StP Ry. Co. of Wash.	Grant & Filing Map	11-6-07		U-169	Act of Congress 3-3-75.
15	J. J. Stephens & Wife	CM&StP Ry. Co. of Wash.	W.D.	8-6-07	34,156, Oct. 16, 1907	3237	
16	J. J. Stephens & Wife	CM&StP Ry. Co. of Wash.	Cont. W.D.	8-6-07	34,156, Oct. 16, 1907	3237	
17	J. J. Stephens & Wife	CM&StP Ry. Co. of Wash.	Snow Easement in W.D.	8-6-07	34,156, Oct. 16, 1907	3237	
18	J. J. Stephens & Wife	CM&StP Ry. Co. of Wash.	Cont. W.D.	8-6-07	34,156, Oct. 16, 1907	3237	
19	J. J. Stephens & Wife	CM&StP Ry. Co. of Wash.	Snow Easement in W.D.	8-6-07	34,156, Oct. 16, 1907	3237	
20	J. J. Stephens & Wife	CM&StP Ry. Co. of Wash.	Snow Easement in W.D.	8-6-07	34,156, Oct. 16, 1907	3237	
21	State of Washington	CM&StP Ry. Co. of Wash.	R.W.D.	8-25-06	35,637, Sept. 21, 1906	3228	
22	United States	C.M. & St. P. Ry. Co.	Grant & Filing Map	4-3-19		U-199	Act of Congress 3-3-75.
23	United States	C.M. & St. P. Ry. Co.	Grant & Filing Map	4-3-19		U-199	Act of Congress 3-3-75.



RIGHT OF WAY AND TRACK MAP RS-30B
CHICAGO, MILWAUKEE & ST. PAUL RY. CO.
 OPERATED BY THE
 CHICAGO, MILWAUKEE & ST. PAUL RY. CO.
 COLUMBIA DIVISION MAIN LINE
 STATION 1469+06.2 TO STATION 1259+47.2
 SCALE: 1" = 400 FT. JUNE 30, 1918.
 OFFICE OF VALUATION ENGINEER
 CHICAGO, ILLINOIS.

Sheet No. 30 of 58 sheets of C. M. & St. P. Ry. Co. Main Line
 from survey station 1469+06.2 to survey station 1259+47.2
A. E. Lodge
 Valuation Engineer

GRANT GRANT