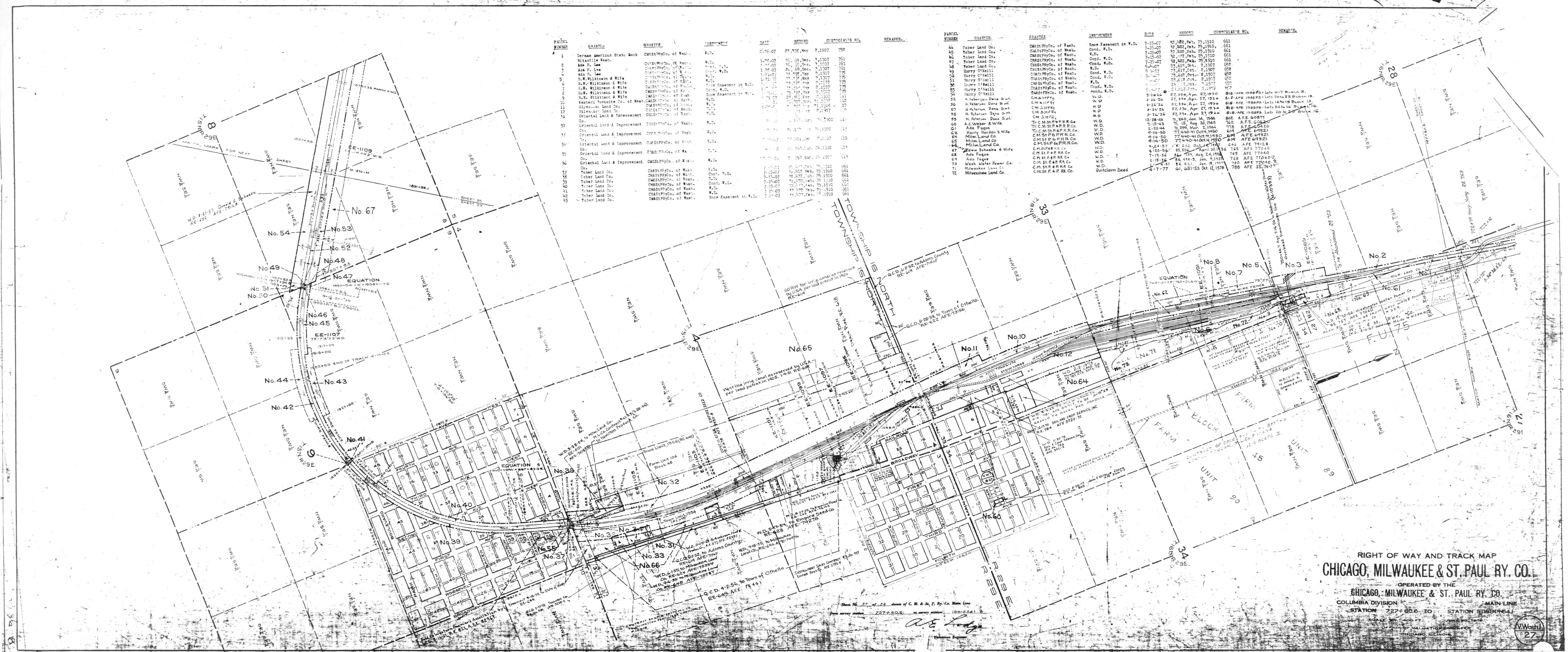


PACEL NUMBER	GRANTOR	GRANTEE	INSTRUMENT	DATE	RECORD	CUSTODIAN'S NO.	REMARKS	PACEL NUMBER	GRANTOR	GRANTEE	INSTRUMENT	DATE	RECORD	CUSTODIAN'S NO.	REMARKS
1	German American State Bank	CM&STP Co. of Wash.	W.D.	1-25-07	27,372, May	2,1907	758	44	Tober Land Co.	CM&STP Co. of Wash.	Spec Easement in W.D.	7-15-07	30,482, Feb.	29,1910	661
2	Ritville Bank	CM&STP Co. of Wash.	W.D.	1-25-07	27,372, May	2,1907	758	45	Tober Land Co.	CM&STP Co. of Wash.	Cond. W.D.	7-15-07	30,482, Feb.	29,1910	661
3	Ada R. Lee	CM&STP Co. of Wash.	W.D.	1-25-07	27,372, May	2,1907	758	46	Tober Land Co.	CM&STP Co. of Wash.	W.D.	7-15-07	30,482, Feb.	29,1910	661
4	Ada R. Lee	CM&STP Co. of Wash.	W.D.	1-25-07	27,372, May	2,1907	758	47	Tober Land Co.	CM&STP Co. of Wash.	Cond. W.D.	7-15-07	30,482, Feb.	29,1910	661
5	R.W. Wilkinson & Wife	CM&STP Co. of Wash.	W.D.	1-25-07	27,372, May	2,1907	758	48	Tober Land Co.	CM&STP Co. of Wash.	Cond. W.D.	7-15-07	30,482, Feb.	29,1910	661
6	R.W. Wilkinson & Wife	CM&STP Co. of Wash.	W.D.	1-25-07	27,372, May	2,1907	758	49	Harry O'Neill	CM&STP Co. of Wash.	W.D.	7-15-07	30,482, Feb.	29,1910	661
7	R.W. Wilkinson & Wife	CM&STP Co. of Wash.	W.D.	1-25-07	27,372, May	2,1907	758	50	Harry O'Neill	CM&STP Co. of Wash.	Cond. W.D.	7-15-07	30,482, Feb.	29,1910	661
8	R.W. Wilkinson & Wife	CM&STP Co. of Wash.	W.D.	1-25-07	27,372, May	2,1907	758	51	Harry O'Neill	CM&STP Co. of Wash.	W.D.	7-15-07	30,482, Feb.	29,1910	661
9	Eastern Traction Co. of Wash.	CM&STP Co. of Wash.	W.D.	1-25-07	27,372, May	2,1907	758	52	Harry O'Neill	CM&STP Co. of Wash.	Cond. W.D.	7-15-07	30,482, Feb.	29,1910	661
10	Milwaukee Land Co.	CM&STP Co. of Wash.	W.D.	1-25-07	27,372, May	2,1907	758	53	Harry O'Neill	CM&STP Co. of Wash.	W.D.	7-15-07	30,482, Feb.	29,1910	661
11	Milwaukee Land Co.	CM&STP Co. of Wash.	W.D.	1-25-07	27,372, May	2,1907	758	54	Harry O'Neill	CM&STP Co. of Wash.	Cond. W.D.	7-15-07	30,482, Feb.	29,1910	661
12	Milwaukee Land Co.	CM&STP Co. of Wash.	W.D.	1-25-07	27,372, May	2,1907	758	55	H. Peterson Dana Sult	CM&STP Co. of Wash.	W.D.	7-15-07	30,482, Feb.	29,1910	661
13	Milwaukee Land Co.	CM&STP Co. of Wash.	W.D.	1-25-07	27,372, May	2,1907	758	56	H. Peterson Dana Sult	CM&STP Co. of Wash.	Cond. W.D.	7-15-07	30,482, Feb.	29,1910	661
14	Milwaukee Land Co.	CM&STP Co. of Wash.	W.D.	1-25-07	27,372, May	2,1907	758	57	H. Peterson Dana Sult	CM&STP Co. of Wash.	W.D.	7-15-07	30,482, Feb.	29,1910	661
15	Milwaukee Land Co.	CM&STP Co. of Wash.	W.D.	1-25-07	27,372, May	2,1907	758	58	H. Peterson Dana Sult	CM&STP Co. of Wash.	Cond. W.D.	7-15-07	30,482, Feb.	29,1910	661
16	Milwaukee Land Co.	CM&STP Co. of Wash.	W.D.	1-25-07	27,372, May	2,1907	758	59	H. Peterson Dana Sult	CM&STP Co. of Wash.	W.D.	7-15-07	30,482, Feb.	29,1910	661
17	Milwaukee Land Co.	CM&STP Co. of Wash.	W.D.	1-25-07	27,372, May	2,1907	758	60	H. Peterson Dana Sult	CM&STP Co. of Wash.	Cond. W.D.	7-15-07	30,482, Feb.	29,1910	661
18	Milwaukee Land Co.	CM&STP Co. of Wash.	W.D.	1-25-07	27,372, May	2,1907	758	61	Ada Fuqua	CM&STP Co. of Wash.	W.D.	7-15-07	30,482, Feb.	29,1910	661
19	Milwaukee Land Co.	CM&STP Co. of Wash.	W.D.	1-25-07	27,372, May	2,1907	758	62	Harry Harden & Wife	CM&STP Co. of Wash.	W.D.	7-15-07	30,482, Feb.	29,1910	661
20	Milwaukee Land Co.	CM&STP Co. of Wash.	W.D.	1-25-07	27,372, May	2,1907	758	63	Milwaukee Land Co.	CM&STP Co. of Wash.	W.D.	7-15-07	30,482, Feb.	29,1910	661
21	Milwaukee Land Co.	CM&STP Co. of Wash.	W.D.	1-25-07	27,372, May	2,1907	758	64	Milwaukee Land Co.	CM&STP Co. of Wash.	Cond. W.D.	7-15-07	30,482, Feb.	29,1910	661
22	Milwaukee Land Co.	CM&STP Co. of Wash.	W.D.	1-25-07	27,372, May	2,1907	758	65	Milwaukee Land Co.	CM&STP Co. of Wash.	W.D.	7-15-07	30,482, Feb.	29,1910	661
23	Milwaukee Land Co.	CM&STP Co. of Wash.	W.D.	1-25-07	27,372, May	2,1907	758	66	Milwaukee Land Co.	CM&STP Co. of Wash.	Cond. W.D.	7-15-07	30,482, Feb.	29,1910	661
24	Milwaukee Land Co.	CM&STP Co. of Wash.	W.D.	1-25-07	27,372, May	2,1907	758	67	Edna Schaeke & Wife	CM&STP Co. of Wash.	W.D.	7-15-07	30,482, Feb.	29,1910	661
25	Milwaukee Land Co.	CM&STP Co. of Wash.	W.D.	1-25-07	27,372, May	2,1907	758	68	Ada Fuqua	CM&STP Co. of Wash.	W.D.	7-15-07	30,482, Feb.	29,1910	661
26	Milwaukee Land Co.	CM&STP Co. of Wash.	W.D.	1-25-07	27,372, May	2,1907	758	69	Ada Fuqua	CM&STP Co. of Wash.	Cond. W.D.	7-15-07	30,482, Feb.	29,1910	661
27	Milwaukee Land Co.	CM&STP Co. of Wash.	W.D.	1-25-07	27,372, May	2,1907	758	70	Wash. Water Power Co.	CM&STP Co. of Wash.	W.D.	7-15-07	30,482, Feb.	29,1910	661
28	Milwaukee Land Co.	CM&STP Co. of Wash.	W.D.	1-25-07	27,372, May	2,1907	758	71	Milwaukee Land Co.	CM&STP Co. of Wash.	W.D.	7-15-07	30,482, Feb.	29,1910	661
29	Milwaukee Land Co.	CM&STP Co. of Wash.	W.D.	1-25-07	27,372, May	2,1907	758	72	Milwaukee Land Co.	CM&STP Co. of Wash.	Cond. W.D.	7-15-07	30,482, Feb.	29,1910	661



RIGHT OF WAY AND TRACK MAP  
**CHICAGO, MILWAUKEE & ST. PAUL RY. CO.**  
 OPERATED BY THE  
**CHICAGO, MILWAUKEE & ST. PAUL RY. CO.**  
 COLUMBIA DIVISION MAIN LINE  
 STATION 727+60.6 TO STATION 5768+64.1