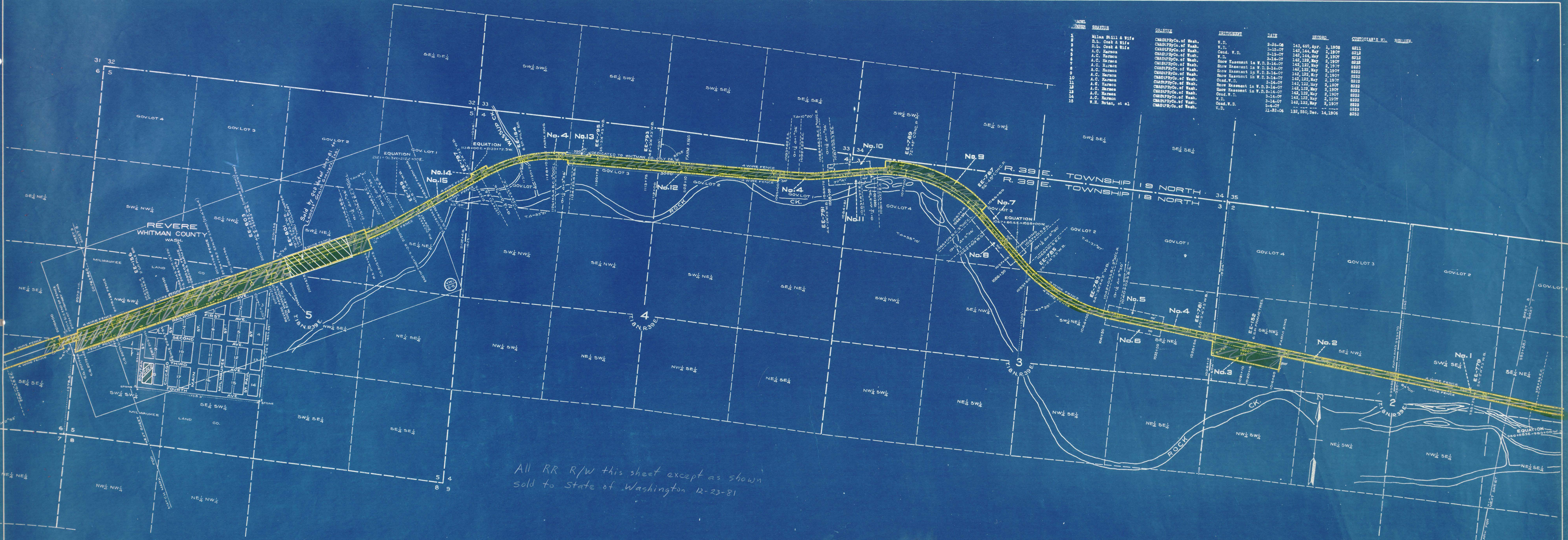


BOOK	PAGE	DATE	RECORD	CUSTOMER'S N.O.	REMARKS
1	1	2-28-08	143,469, Apr. 1, 1908	6211	
2	2	3-15-07	142,144, May 2, 1907	6212	
3	3	3-15-07	142,144, May 2, 1907	6213	
4	4	3-14-07	142,144, May 2, 1907	6214	
5	5	3-14-07	142,144, May 2, 1907	6215	
6	6	3-14-07	142,144, May 2, 1907	6216	
7	7	3-14-07	142,144, May 2, 1907	6217	
8	8	3-14-07	142,144, May 2, 1907	6218	
9	9	3-14-07	142,144, May 2, 1907	6219	
10	10	3-14-07	142,144, May 2, 1907	6220	
11	11	3-14-07	142,144, May 2, 1907	6221	
12	12	3-14-07	142,144, May 2, 1907	6222	
13	13	3-14-07	142,144, May 2, 1907	6223	
14	14	3-14-07	142,144, May 2, 1907	6224	
15	15	5-4-07	142,144, May 2, 1907	6225	
		11-22-06	132,550, Dec. 14, 1906	6226	



All RR R/W this sheet except as shown
 sold to State of Washington 12-23-81

Sheet No. 381 of 381 sheets of C. M. & St. P. Ry. Co. Main Line
 from survey station 983+38.1 to survey station 2076+86
A.E. Lodge
 Valuation Engineer

RIGHT OF WAY AND TRACK MAP
CHICAGO, MILWAUKEE & ST. PAUL RY. CO.
 OPERATED BY THE
 CHICAGO, MILWAUKEE & ST. PAUL RY. CO.
 COLUMBIA DIVISION MAIN LINE
 STATION 983+38.1 TO STATION 2076+86
 SCALE: 1" = 400 FT. JUNE 30, 1918.
 OFFICE OF VALUATION ENGINEER
 CHICAGO, ILLINOIS.

