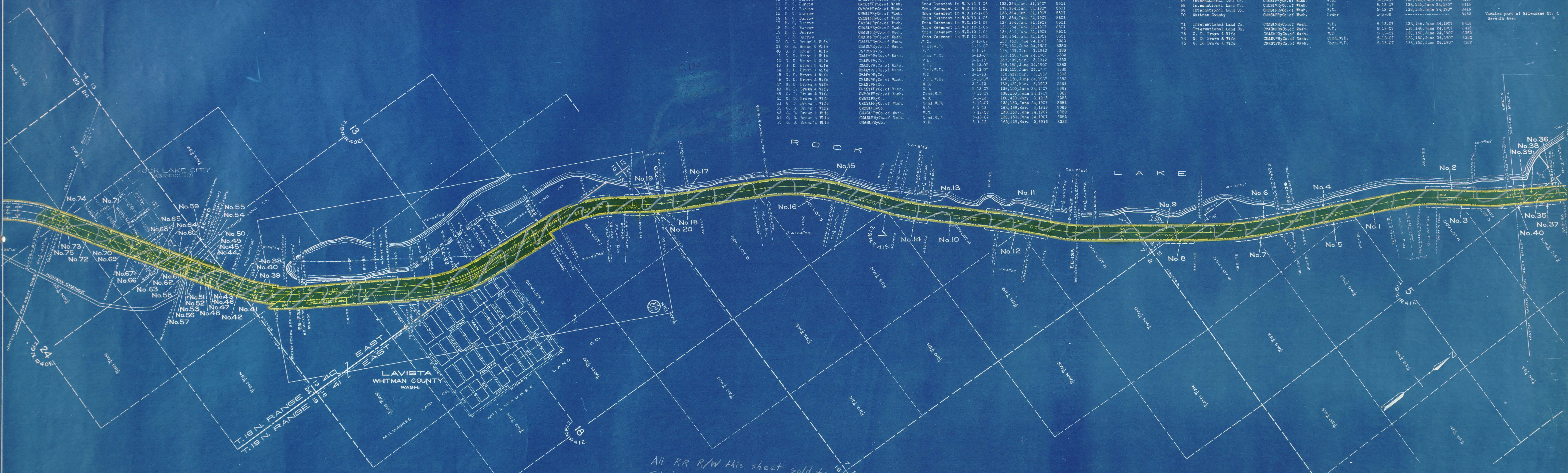


PARCEL NUMBER	GRANTOR	GRANTEE	INSTRUMENT	DATE	RECORD	CUSTODIAN'S NO.	REMARKS	PARCEL NUMBER	GRANTOR	GRANTEE	INSTRUMENT	DATE	RECORD	CUSTODIAN'S NO.	REMARKS
1	Daniel Brophy & Wife	CHAS. PRYCO. OF WASH.	W.D.	9-20-06	133,133, Nov. 2, 1906	8581		56	G. D. Brown & Wife	CHAS. PRYCO. OF WASH.	W.D.	5-13-07	136,150, June 24, 1907	8382	
2	Daniel Brophy & Wife	CHAS. PRYCO. OF WASH.	Spec. Assesment in W.D.	9-20-06	133,133, Nov. 2, 1906	8581		57	G. D. Brown & Wife	CHAS. PRYCO. OF WASH.	W.D.	5-13-07	136,150, June 24, 1907	8383	
3	Daniel Brophy & Wife	CHAS. PRYCO. OF WASH.	Spec. Assesment in W.D.	9-20-06	133,133, Nov. 2, 1906	8581		58	G. D. Brown & Wife	CHAS. PRYCO. OF WASH.	W.D.	5-13-07	136,150, June 24, 1907	8384	
4	Daniel Brophy & Wife	CHAS. PRYCO. OF WASH.	Spec. Assesment in W.D.	9-20-06	133,133, Nov. 2, 1906	8581		59	G. D. Brown & Wife	CHAS. PRYCO. OF WASH.	Cont. W.D.	5-13-07	136,150, June 24, 1907	8385	
5	Daniel Brophy & Wife	CHAS. PRYCO. OF WASH.	Spec. Assesment in W.D.	9-20-06	133,133, Nov. 2, 1906	8581		60	G. D. Brown & Wife	CHAS. PRYCO. OF WASH.	W.D.	5-13-07	136,150, June 24, 1907	8386	
6	Daniel Brophy & Wife	CHAS. PRYCO. OF WASH.	Spec. Assesment in W.D.	9-20-06	133,133, Nov. 2, 1906	8581		61	G. D. Brown & Wife	CHAS. PRYCO. OF WASH.	Cont. W.D.	5-13-07	136,150, June 24, 1907	8387	
7	Daniel Brophy & Wife	CHAS. PRYCO. OF WASH.	Spec. Assesment in W.D.	9-20-06	133,133, Nov. 2, 1906	8581		62	G. D. Brown & Wife	CHAS. PRYCO. OF WASH.	W.D.	5-13-07	136,150, June 24, 1907	8388	
8	Daniel Brophy & Wife	CHAS. PRYCO. OF WASH.	Spec. Assesment in W.D.	9-20-06	133,133, Nov. 2, 1906	8581		63	Whitman County	CHAS. PRYCO. OF WASH.	Order	5-13-07	136,150, June 24, 1907	8389	
9	United States	CHAS. PRYCO. OF WASH.	No. Grant & Filing Map					64	International Land Co.	CHAS. PRYCO. OF WASH.	W.D.	5-13-07	136,150, June 24, 1907	8416	
10	H. C. Burrow	CHAS. PRYCO. OF WASH.	W.D.	12-1-06	133,364, Jan. 21, 1907	8501		65	International Land Co.	CHAS. PRYCO. OF WASH.	W.D.	5-13-07	136,150, June 24, 1907	8417	
11	H. C. Burrow	CHAS. PRYCO. OF WASH.	Spec. Assesment in W.D.	12-1-06	133,364, Jan. 21, 1907	8501		66	International Land Co.	CHAS. PRYCO. OF WASH.	W.D.	5-13-07	136,150, June 24, 1907	8418	
12	H. C. Burrow	CHAS. PRYCO. OF WASH.	Spec. Assesment in W.D.	12-1-06	133,364, Jan. 21, 1907	8501		67	International Land Co.	CHAS. PRYCO. OF WASH.	W.D.	5-13-07	136,150, June 24, 1907	8419	
13	H. C. Burrow	CHAS. PRYCO. OF WASH.	Spec. Assesment in W.D.	12-1-06	133,364, Jan. 21, 1907	8501		68	International Land Co.	CHAS. PRYCO. OF WASH.	W.D.	5-13-07	136,150, June 24, 1907	8420	
14	H. C. Burrow	CHAS. PRYCO. OF WASH.	Spec. Assesment in W.D.	12-1-06	133,364, Jan. 21, 1907	8501		69	International Land Co.	CHAS. PRYCO. OF WASH.	W.D.	5-13-07	136,150, June 24, 1907	8421	
15	H. C. Burrow	CHAS. PRYCO. OF WASH.	Spec. Assesment in W.D.	12-1-06	133,364, Jan. 21, 1907	8501		70	International Land Co.	CHAS. PRYCO. OF WASH.	W.D.	5-13-07	136,150, June 24, 1907	8422	
16	H. C. Burrow	CHAS. PRYCO. OF WASH.	Spec. Assesment in W.D.	12-1-06	133,364, Jan. 21, 1907	8501		71	International Land Co.	CHAS. PRYCO. OF WASH.	W.D.	5-13-07	136,150, June 24, 1907	8423	
17	H. C. Burrow	CHAS. PRYCO. OF WASH.	Spec. Assesment in W.D.	12-1-06	133,364, Jan. 21, 1907	8501		72	International Land Co.	CHAS. PRYCO. OF WASH.	W.D.	5-13-07	136,150, June 24, 1907	8424	
18	H. C. Burrow	CHAS. PRYCO. OF WASH.	Spec. Assesment in W.D.	12-1-06	133,364, Jan. 21, 1907	8501		73	G. D. Brown & Wife	CHAS. PRYCO. OF WASH.	W.D.	5-13-07	136,150, June 24, 1907	8392	
19	H. C. Burrow	CHAS. PRYCO. OF WASH.	Spec. Assesment in W.D.	12-1-06	133,364, Jan. 21, 1907	8501		74	G. D. Brown & Wife	CHAS. PRYCO. OF WASH.	Cont. W.D.	5-13-07	136,150, June 24, 1907	8393	
20	H. C. Burrow	CHAS. PRYCO. OF WASH.	Spec. Assesment in W.D.	12-1-06	133,364, Jan. 21, 1907	8501		75	G. D. Brown & Wife	CHAS. PRYCO. OF WASH.	Cont. W.D.	5-13-07	136,150, June 24, 1907	8394	
38	G. D. Brown & Wife	CHAS. PRYCO. OF WASH.	Cont. W.D.	5-13-07	136,150, June 24, 1907	8382									
39	G. D. Brown & Wife	CHAS. PRYCO. OF WASH.	Cont. W.D.	5-13-07	136,150, June 24, 1907	8382									
40	G. D. Brown & Wife	CHAS. PRYCO. OF WASH.	Cont. W.D.	5-13-07	136,150, June 24, 1907	8382									
41	G. D. Brown & Wife	CHAS. PRYCO. OF WASH.	Cont. W.D.	5-13-07	136,150, June 24, 1907	8382									
42	G. D. Brown & Wife	CHAS. PRYCO. OF WASH.	Cont. W.D.	5-13-07	136,150, June 24, 1907	8382									
43	G. D. Brown & Wife	CHAS. PRYCO. OF WASH.	Cont. W.D.	5-13-07	136,150, June 24, 1907	8382									
44	G. D. Brown & Wife	CHAS. PRYCO. OF WASH.	Cont. W.D.	5-13-07	136,150, June 24, 1907	8382									
45	G. D. Brown & Wife	CHAS. PRYCO. OF WASH.	Cont. W.D.	5-13-07	136,150, June 24, 1907	8382									
46	G. D. Brown & Wife	CHAS. PRYCO. OF WASH.	Cont. W.D.	5-13-07	136,150, June 24, 1907	8382									
47	G. D. Brown & Wife	CHAS. PRYCO. OF WASH.	Cont. W.D.	5-13-07	136,150, June 24, 1907	8382									
48	G. D. Brown & Wife	CHAS. PRYCO. OF WASH.	Cont. W.D.	5-13-07	136,150, June 24, 1907	8382									
49	G. D. Brown & Wife	CHAS. PRYCO. OF WASH.	Cont. W.D.	5-13-07	136,150, June 24, 1907	8382									
50	G. D. Brown & Wife	CHAS. PRYCO. OF WASH.	Cont. W.D.	5-13-07	136,150, June 24, 1907	8382									
51	G. D. Brown & Wife	CHAS. PRYCO. OF WASH.	Cont. W.D.	5-13-07	136,150, June 24, 1907	8382									
52	G. D. Brown & Wife	CHAS. PRYCO. OF WASH.	Cont. W.D.	5-13-07	136,150, June 24, 1907	8382									
53	G. D. Brown & Wife	CHAS. PRYCO. OF WASH.	Cont. W.D.	5-13-07	136,150, June 24, 1907	8382									
54	G. D. Brown & Wife	CHAS. PRYCO. OF WASH.	Cont. W.D.	5-13-07	136,150, June 24, 1907	8382									
55	G. D. Brown & Wife	CHAS. PRYCO. OF WASH.	Cont. W.D.	5-13-07	136,150, June 24, 1907	8382									



**RIGHT OF WAY AND TRACK MAP**  
**CHICAGO, MILWAUKEE & ST. PAUL RY. CO.**  
 OPERATED BY THE  
**CHICAGO, MILWAUKEE & ST. PAUL RY. CO.**  
 COLUMBIA DIVISION MAIN LINE  
 STATION 349+60.1 TO STATION 561+00.1  
 SCALE: 1" = 400 FT. JUNE 30, 1918.  
 OFFICE OF VALUATION ENGINEER  
 CHICAGO, ILLINOIS.

Sheet No. 2 of 36 sheets of C. M. & St. P. Ry. Co. Main Line  
 from survey station 349+60.1 to survey station 561+00.1  
 A. E. Lodge  
 Valuation Engineer

