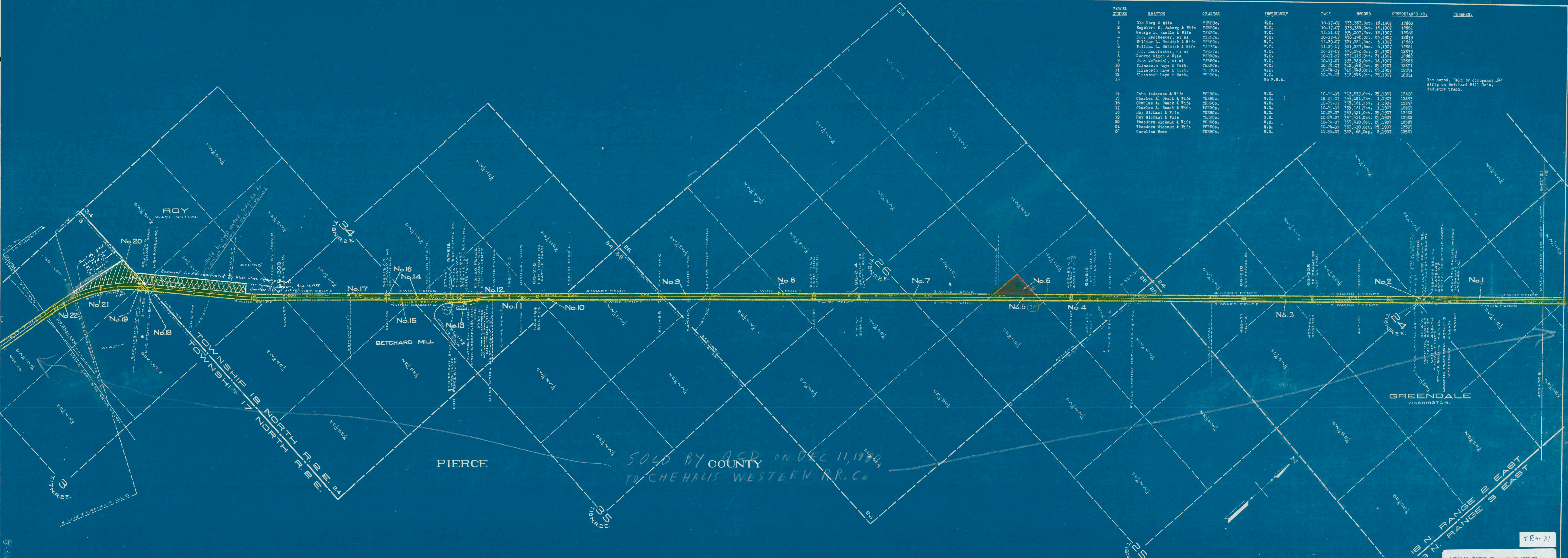


PARCEL NUMBER	GRANTOR	GRANTEE	INSTRUMENT	DATE	RECORD	CUSTODIAN'S NO.	REMARKS
1	Old Ford & Wife	TERROCo.	W.D.	10-17-07	353,783, Oct. 16, 1907	12660	
2	George B. Jansky & Wife	TERROCo.	W.D.	10-17-07	353,784, Oct. 16, 1907	12661	
3	George B. Jansky & Wife	TERROCo.	W.D.	11-11-07	353,785, Nov. 12, 1907	12662	
4	E. C. Manchester, et al	TERROCo.	W.D.	10-17-07	353,786, Oct. 23, 1907	12679	
5	William L. Radtke & Wife	TERROCo.	W.D.	11-29-07	353,787, Dec. 6, 1907	12680	
6	William L. Radtke & Wife	TERROCo.	W.D.	11-29-07	353,788, Dec. 6, 1907	12681	
7	E. C. Manchester, et al	TERROCo.	W.D.	10-17-07	353,789, Oct. 23, 1907	12679	
8	George Nixon & Wife	TERROCo.	W.D.	10-17-07	353,790, Oct. 23, 1907	12682	
9	John McDaniel, et al	TERROCo.	W.D.	10-17-07	353,791, Oct. 23, 1907	12683	
10	Elizabeth Hays & Husb.	TERROCo.	W.D.	10-24-07	353,792, Oct. 25, 1907	12691	
11	Elizabeth Hays & Husb.	TERROCo.	W.D.	10-24-07	353,793, Oct. 25, 1907	12691	
12	Elizabeth Hays & Husb.	TERROCo.	W.D.	10-24-07	353,794, Oct. 25, 1907	12691	
13			to P.S.A.				
14	John Anderson & Wife	TERROCo.	W.D.	10-24-07	353,795, Oct. 25, 1907	12692	
15	Charles A. Beach & Wife	TERROCo.	W.D.	10-24-07	353,796, Nov. 1, 1907	12693	
16	Charles A. Beach & Wife	TERROCo.	W.D.	10-24-07	353,797, Nov. 1, 1907	12693	
17	Charles A. Beach & Wife	TERROCo.	W.D.	10-24-07	353,798, Nov. 1, 1907	12693	
18	Roy Michaut & Wife	TERROCo.	W.D.	10-24-07	353,799, Oct. 25, 1907	12692	
19	Roy Michaut & Wife	TERROCo.	W.D.	10-24-07	353,800, Oct. 25, 1907	12692	
20	Theodore Michaut & Wife	TERROCo.	W.D.	10-24-07	353,801, Oct. 25, 1907	12693	
21	Theodore Michaut & Wife	TERROCo.	W.D.	10-24-07	353,802, Oct. 25, 1907	12693	
22	Caroline Wren	TERROCo.	W.D.	11-30-07	353,803, Dec. 3, 1907	12691	

Not owned, held by occupancy, by strip on Betchard Mill Co's. industry tract.



SOLD BY ACD ON DEC 11, 1932
TO CHEHALIS WESTERN RR. CO

TE 4-21

CHEHALIS WESTERN RR CEASED TO OPERATE JULY 92, RECLASSIFIED TO NON-OP 1-1-93

RIGHT OF WAY AND TRACK MAP
CHICAGO, MILWAUKEE & ST. PAUL RY. CO.
OPERATED BY THE
CHICAGO, MILWAUKEE & ST. PAUL RY. CO.

Sheet No. 21 of 27 sheets of C. M. & St. P. Ry. Co. Main Line
from survey station 423+32.2 to survey station 634+52.8
COAST DIVISION STATION 423+32.8 TO STATION 634+52.8 MAIN LINE

SCALE: 1" = 400 FT. JUNE 30 1918
OFFICE OF VALUATION ENGINEER
CHICAGO, ILLINOIS