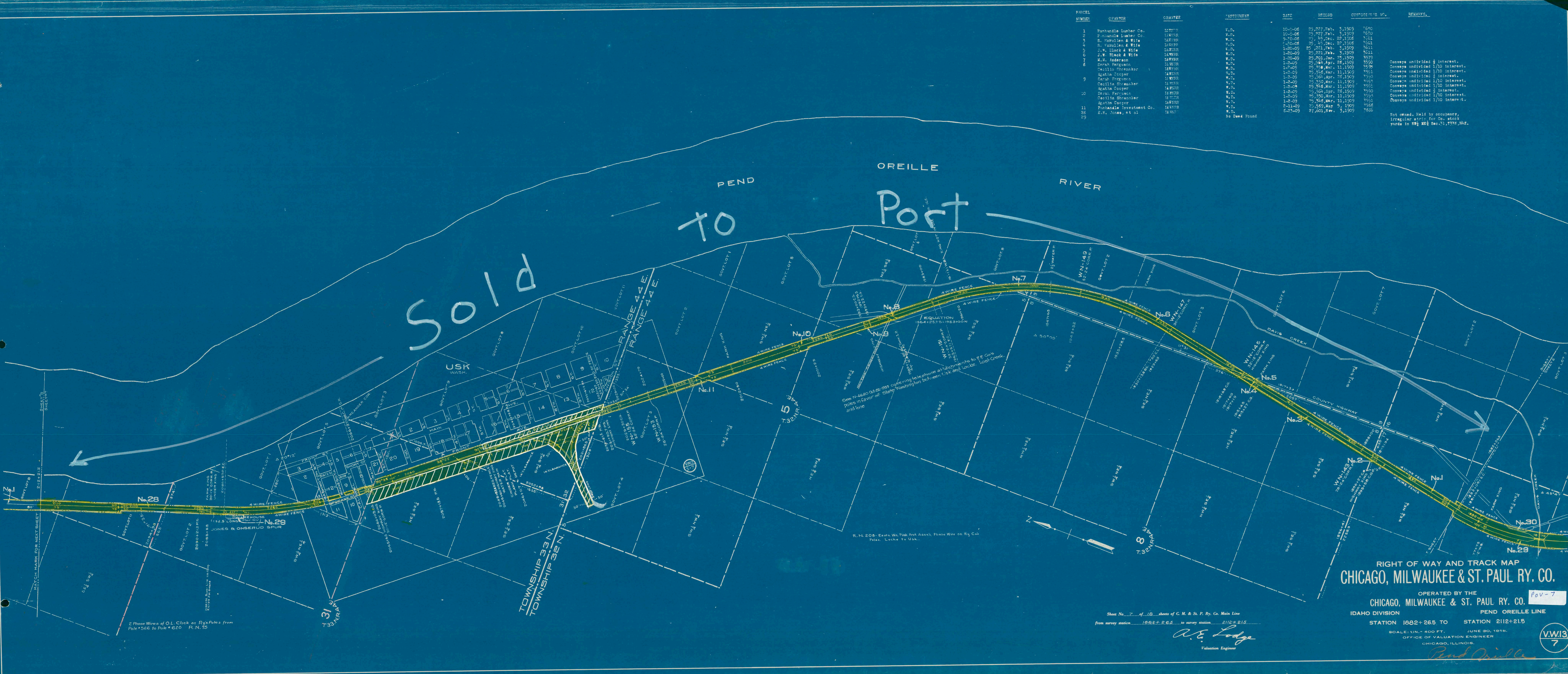


PARCEL NUMBER	GRANTOR	GRANTEE	INSTRUMENT	DATE	RECORD	CONSIDERATION	REMARKS
1	Panhandle Lumber Co.	TO WHOM IT MAY COME	W.D.	10-3-06	25,227, Feb.	3,1509	7690
2	Panhandle Lumber Co.	LAWRENCE	W.D.	10-3-06	25,227, Feb.	3,1509	7690
3	S. Holliden & Wife	LAWRENCE	W.D.	9-20-05	25, 44, Dec.	25,1508	7601
4	S. Holliden & Wife	LAWRENCE	W.D.	9-20-05	25, 44, Dec.	25,1508	7601
5	J.W. Black & Wife	LAWRENCE	W.D.	1-20-09	25, 221, Feb.	3,1509	7611
6	M.H. Anderson	LAWRENCE	W.D.	1-20-09	25, 221, Feb.	3,1509	7611
7	Sarah Ferguson	LAWRENCE	W.D.	1-20-09	25, 201, Jan.	25,1509	7579
8	Agatha Cooper	LAWRENCE	W.D.	1-2-05	25, 564, Apr.	25,1509	7590
9	Agatha Cooper	LAWRENCE	W.D.	1-2-05	25, 564, Apr.	25,1509	7590
10	Agatha Cooper	LAWRENCE	W.D.	1-2-05	25, 564, Apr.	25,1509	7590
11	Panhandle Investment Co.	LAWRENCE	W.D.	1-2-05	25, 564, Apr.	25,1509	7590
12	Panhandle Investment Co.	LAWRENCE	W.D.	1-2-05	25, 564, Apr.	25,1509	7590
13	Panhandle Investment Co.	LAWRENCE	W.D.	1-2-05	25, 564, Apr.	25,1509	7590
14	Panhandle Investment Co.	LAWRENCE	W.D.	1-2-05	25, 564, Apr.	25,1509	7590
15	Panhandle Investment Co.	LAWRENCE	W.D.	1-2-05	25, 564, Apr.	25,1509	7590
16	Panhandle Investment Co.	LAWRENCE	W.D.	1-2-05	25, 564, Apr.	25,1509	7590
17	Panhandle Investment Co.	LAWRENCE	W.D.	1-2-05	25, 564, Apr.	25,1509	7590
18	Panhandle Investment Co.	LAWRENCE	W.D.	1-2-05	25, 564, Apr.	25,1509	7590
19	Panhandle Investment Co.	LAWRENCE	W.D.	1-2-05	25, 564, Apr.	25,1509	7590
20	Panhandle Investment Co.	LAWRENCE	W.D.	1-2-05	25, 564, Apr.	25,1509	7590
21	Panhandle Investment Co.	LAWRENCE	W.D.	1-2-05	25, 564, Apr.	25,1509	7590
22	Panhandle Investment Co.	LAWRENCE	W.D.	1-2-05	25, 564, Apr.	25,1509	7590
23	Panhandle Investment Co.	LAWRENCE	W.D.	1-2-05	25, 564, Apr.	25,1509	7590
24	Panhandle Investment Co.	LAWRENCE	W.D.	1-2-05	25, 564, Apr.	25,1509	7590
25	Panhandle Investment Co.	LAWRENCE	W.D.	1-2-05	25, 564, Apr.	25,1509	7590
26	Panhandle Investment Co.	LAWRENCE	W.D.	1-2-05	25, 564, Apr.	25,1509	7590
27	Panhandle Investment Co.	LAWRENCE	W.D.	1-2-05	25, 564, Apr.	25,1509	7590
28	Panhandle Investment Co.	LAWRENCE	W.D.	1-2-05	25, 564, Apr.	25,1509	7590
29	Panhandle Investment Co.	LAWRENCE	W.D.	1-2-05	25, 564, Apr.	25,1509	7590
30	Panhandle Investment Co.	LAWRENCE	W.D.	1-2-05	25, 564, Apr.	25,1509	7590
31	Panhandle Investment Co.	LAWRENCE	W.D.	1-2-05	25, 564, Apr.	25,1509	7590
32	Panhandle Investment Co.	LAWRENCE	W.D.	1-2-05	25, 564, Apr.	25,1509	7590
33	Panhandle Investment Co.	LAWRENCE	W.D.	1-2-05	25, 564, Apr.	25,1509	7590
34	Panhandle Investment Co.	LAWRENCE	W.D.	1-2-05	25, 564, Apr.	25,1509	7590
35	Panhandle Investment Co.	LAWRENCE	W.D.	1-2-05	25, 564, Apr.	25,1509	7590
36	Panhandle Investment Co.	LAWRENCE	W.D.	1-2-05	25, 564, Apr.	25,1509	7590
37	Panhandle Investment Co.	LAWRENCE	W.D.	1-2-05	25, 564, Apr.	25,1509	7590
38	Panhandle Investment Co.	LAWRENCE	W.D.	1-2-05	25, 564, Apr.	25,1509	7590
39	Panhandle Investment Co.	LAWRENCE	W.D.	1-2-05	25, 564, Apr.	25,1509	7590
40	Panhandle Investment Co.	LAWRENCE	W.D.	1-2-05	25, 564, Apr.	25,1509	7590
41	Panhandle Investment Co.	LAWRENCE	W.D.	1-2-05	25, 564, Apr.	25,1509	7590
42	Panhandle Investment Co.	LAWRENCE	W.D.	1-2-05	25, 564, Apr.	25,1509	7590
43	Panhandle Investment Co.	LAWRENCE	W.D.	1-2-05	25, 564, Apr.	25,1509	7590
44	Panhandle Investment Co.	LAWRENCE	W.D.	1-2-05	25, 564, Apr.	25,1509	7590
45	Panhandle Investment Co.	LAWRENCE	W.D.	1-2-05	25, 564, Apr.	25,1509	7590
46	Panhandle Investment Co.	LAWRENCE	W.D.	1-2-05	25, 564, Apr.	25,1509	7590
47	Panhandle Investment Co.	LAWRENCE	W.D.	1-2-05	25, 564, Apr.	25,1509	7590
48	Panhandle Investment Co.	LAWRENCE	W.D.	1-2-05	25, 564, Apr.	25,1509	7590
49	Panhandle Investment Co.	LAWRENCE	W.D.	1-2-05	25, 564, Apr.	25,1509	7590
50	Panhandle Investment Co.	LAWRENCE	W.D.	1-2-05	25, 564, Apr.	25,1509	7590

Not owned. Held by occupancy, irregular strip for Co. stock yards in NW 1/4 Sec 31, T34N, R1E.



**RIGHT OF WAY AND TRACK MAP
CHICAGO, MILWAUKEE & ST. PAUL RY. CO.**

OPERATED BY THE
CHICAGO, MILWAUKEE & ST. PAUL RY. CO. Pav-7
IDAHO DIVISION PEND OREILLE LINE
STATION 1882+265 TO STATION 2112+215

Sheet No. 7 of 10 sheets of C. M. & St. P. Ry. Co. Main Line
from survey station 1882+265 to survey station 2112+215
A.E. Lodge
Valuation Engineer

SCALE: 1 1/4" = 400 FT. JUNE 30, 1918.
OFFICE OF VALUATION ENGINEER
CHICAGO, ILLINOIS.



2 Phone Wires of O.L. Click on Ry's Poles from Pole #566 to Pole #620 R.N. 75

R.N. 206 - Exam. Wm. T. Prof. Assn's. Phone Wire on Ry. Co. Poles. Locke to Uak.