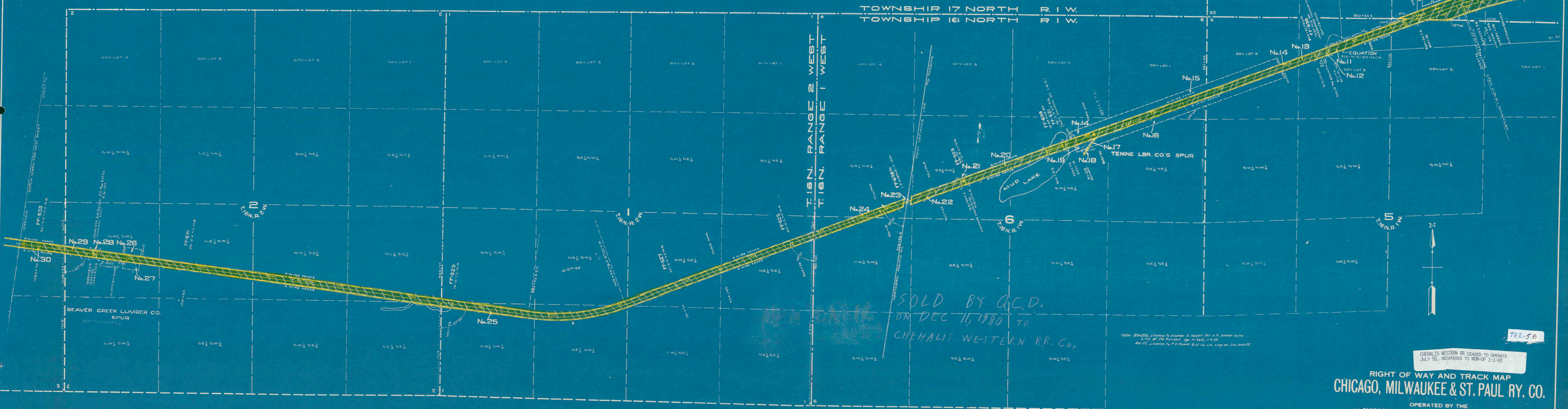


11	Weyerhaeuser Timber Co.	CM&STP Ry. Co.	W.D.	3-17-10	77, 4, Apr. 25, 1910	4754
12	Weyerhaeuser Timber Co.	CM&STP Ry. Co.	W.D.	3-17-10	77, 4, Apr. 25, 1910	4754
13	Weyerhaeuser Timber Co.	CM&STP Ry. Co.	W.D.	3-17-10	77, 4, Apr. 25, 1910	4754
14	A. A. Nelson	CM&STP Ry. Co.	W.D.	4-26-09	73, 990, May 3, 1909	4753
15	A. A. Nelson	CM&STP Ry. Co.	W.D.	4-26-09	73, 990, May 3, 1909	4753
16	A. A. Nelson	CM&STP Ry. Co.	W.D.	4-26-09	73, 990, May 3, 1909	4753
17	O. M. Hubbard	CM&STP Ry. Co.	P.S.A.	5-9-17	3-2950	3-2950
18	O. M. Hubbard	CM&STP Ry. Co.	P.S.A.	5-9-17	3-2950	3-2950
19	A. A. Nelson	CM&STP Ry. Co.	W.D.	4-26-09	73, 990, May 3, 1909	4753
20	A. A. Nelson	CM&STP Ry. Co.	W.D.	4-26-09	73, 990, May 3, 1909	4753
21	A. A. Nelson	CM&STP Ry. Co.	W.D.	4-26-09	73, 990, May 3, 1909	4753
22	A. A. Nelson	CM&STP Ry. Co.	W.D.	4-26-09	73, 990, May 3, 1909	4753
23	Northern Pacific Ry. Co.	CM&STP Ry. Co.	Agreement	2-28-11		2-28-11
24	A. A. Nelson	CM&STP Ry. Co.	W.D.	4-26-09	73, 990, May 3, 1909	4753
25	L. O. Whitaker & Wife	CM&STP Ry. Co.	W.D.	4-17-09	74, 28, May 20, 1909	4803
26	L. O. Whitaker & Wife	CM&STP Ry. Co.	W.D.	4-17-09	74, 28, May 20, 1909	4803
27	L. O. Whitaker & Wife	CM&STP Ry. Co.	W.D.	4-17-09	74, 28, May 20, 1909	4803
28	L. O. Whitaker & Wife	CM&STP Ry. Co.	W.D.	4-17-09	74, 28, May 20, 1909	4803
29	L. O. Whitaker & Wife	CM&STP Ry. Co.	W.D.	4-17-09	74, 28, May 20, 1909	4803
30	R. E. Strong	CM&STP Ry. Co.	W.D.	6-30-09	74, 28, May 20, 1909	4803

Not owned, 17' strip on O.M. Hubbard's industry track.
Not owned, 17' strip on O.M. Hubbard's industry track.

Crossing RR



SOLD BY Q.C.D.
ON DEC 11, 1980 TO
CHEHALIS WESTERN R.R. CO.

Note: RM-216 License to Andrew A. Nelson for a R. power wire
RM-117 License to R.S. Power Co. for a R. wire of 314 1045197

CHEHALIS WESTERN RR CEASED TO OPERATE
JULY 92, RECLASSIFIED TO NON-OP 1-1-95

RIGHT OF WAY AND TRACK MAP
CHICAGO, MILWAUKEE & ST. PAUL RY. CO.

OPERATED BY THE
CHICAGO, MILWAUKEE & ST. PAUL RY. CO.
COAST DIVISION MC KENNA TO HELSING JCT. LINE
STATION 844+27.2 TO STATION 1055+51.5
SCALE: 1" = 400 FT. JUNE 30, 1918.
OFFICE OF VALUATION ENGINEER
CHICAGO, ILLINOIS.

Sheet No. 5 of 11, Sheets of C. M. & St. P. Ry. Co. Main Line
from survey station 844+27.2 to survey station 1055+51.5
A. E. Lodge
Valuation Engineer

TE2-5B

WWII
5

Thurston