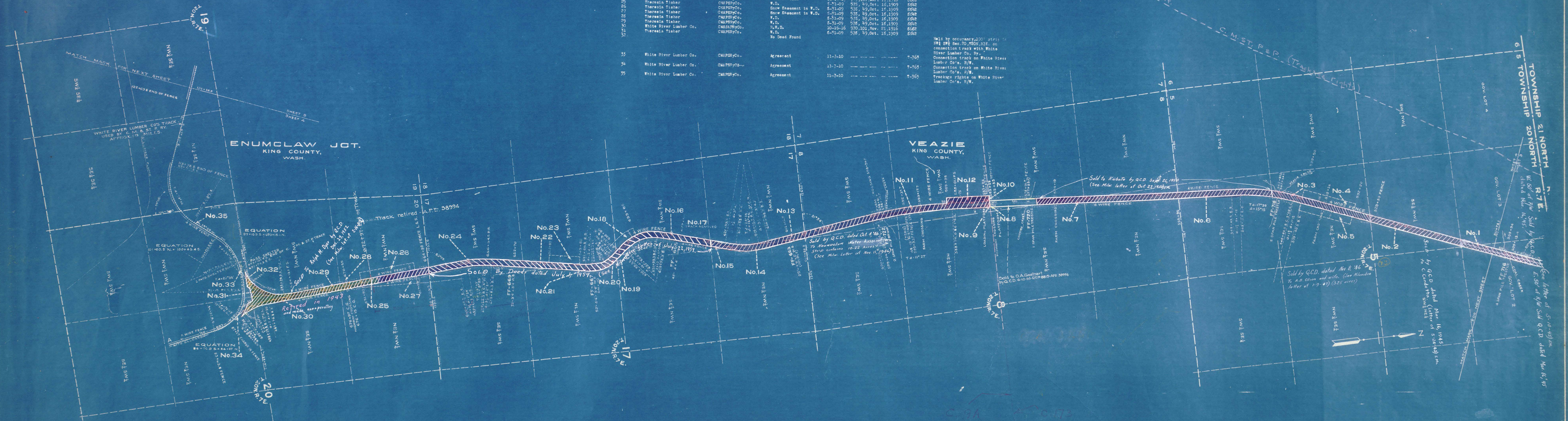


PARCEL NUMBER	GRANTOR	GRANTEE	INSTRUMENT	DATE	RECORD	QUOTATION NO.	REMARKS
1	A.J. McKillop	CM&P Ry. Co.	W.D.	7-15-10	724,557, Apr. 29, 1910	8601	
2	H.B. Keshley, et al.	CM&P Ry. Co.	W.D.	12-9-09	741, 70, Jan. 8, 1910	8602	
3	Geo. E. Baisley & Wife	CM&P Ry. Co.	W.D.	9-2-09	727, 72, Oct. 15, 1909	8603	
4	Geo. E. Baisley & Wife	CM&P Ry. Co.	Snow Easement in W.D.	9-2-09	727, 72, Oct. 15, 1909	8603	
5	F.H. Amis & Wife	CM&P Ry. Co.	Snow Easement in W.D.	9-2-09	727, 72, Oct. 15, 1909	8603	
6	T. Chas. Coombe & Wife	CM&P Ry. Co.	W.D.	9-2-09	724, 73, Nov. 7, 1909	8604	
7	T. Chas. Coombe & Wife	CM&P Ry. Co.	W.D.	9-2-09	727, 73, Oct. 15, 1909	8605	
8	Otto Tamm & Wife	CM&P Ry. Co.	W.D.	9-2-09	721, 97, Oct. 15, 1909	8618	
9	Otto Tamm & Wife	CM&P Ry. Co.	W.D.	9-2-09	727, 73, Oct. 15, 1909	8619	
10	Otto Tamm & Wife	CM&P Ry. Co.	W.D.	9-2-09	721, 97, Oct. 15, 1909	8618	
11	Otto Tamm & Wife	CM&P Ry. Co.	W.D.	9-2-09	727, 73, Oct. 15, 1909	8619	
12	Otto Tamm, et al.	CM&P Ry. Co.	W.D.	9-2-09	727, 73, Oct. 15, 1909	8619	
13	Otto Tamm, et al.	CM&P Ry. Co.	W.D.	9-2-09	721, 97, Oct. 15, 1909	8618	
14	Northwestern Improvement Co.	CM&P Ry. Co.	W.D.	1-8-10	736, 162, Mar. 17, 1910	8624	
15	Otto Tamm, et al.	CM&P Ry. Co.	W.D.	9-2-09	727, 73, Oct. 15, 1909	8619	
16	Otto Tamm & Wife	CM&P Ry. Co.	W.D.	9-2-09	721, 97, Oct. 15, 1909	8618	
17	Otto Tamm, et al.	CM&P Ry. Co.	Perp. Easement	10-24-12	721, 97, Oct. 15, 1909	8618	
18	Otto Tamm & Wife	CM&P Ry. Co.	Snow Easement in W.D.	9-2-09	721, 97, Oct. 15, 1909	8618	
19	Otto Tamm & Wife	CM&P Ry. Co.	Snow Easement in W.D.	9-2-09	721, 97, Oct. 15, 1909	8618	
20	King County Land Co.	CM&P Ry. Co.	W.D.	9-13-09	685, 266, Oct. 15, 1909	8627	
21	Northwestern Improvement Co.	CM&P Ry. Co.	W.D.	1-2-10	736, 162, Mar. 17, 1910	8624	
22	King County Land Co.	CM&P Ry. Co.	W.D.	9-15-09	685, 266, Oct. 15, 1909	8627	
23	King County Land Co.	CM&P Ry. Co.	Snow Easement in W.D.	9-15-09	685, 266, Oct. 15, 1909	8627	
24	County of King	CM&P Ry. Co.	Condemnation	12-19-02	730, 161, Mar. 17, 1910	8628	
25	Theresa Fisher	CM&P Ry. Co.	W.D.	5-11-09	575, 49, Oct. 15, 1909	8642	
26	Theresa Fisher	CM&P Ry. Co.	Snow Easement in W.D.	5-11-09	575, 49, Oct. 15, 1909	8642	
27	Theresa Fisher	CM&P Ry. Co.	Snow Easement in W.D.	5-11-09	575, 49, Oct. 15, 1909	8642	
28	Theresa Fisher	CM&P Ry. Co.	W.D.	5-11-09	575, 49, Oct. 15, 1909	8642	
29	Theresa Fisher	CM&P Ry. Co.	W.D.	5-11-09	575, 49, Oct. 15, 1909	8642	
30	White River Lumber Co.	CM&P Ry. Co.	W.D.	8-31-09	576, 49, Oct. 15, 1909	8642	
31	Theresa Fisher	CM&P Ry. Co.	W.D.	10-16-16	570, 101, Nov. 21, 1916	8646	
32	Theresa Fisher	CM&P Ry. Co.	W.D.	5-11-09	575, 49, Oct. 15, 1909	8642	
			No Dead Found				
33	White River Lumber Co.	CM&P Ry. Co.	Agreement	11-7-10		7-564	Held by occupancy, 100' strip in 104' SW 1/4 Sec. 20, T20N R7E, on connection track with White River Lumber Co. Ry.
34	White River Lumber Co.	CM&P Ry. Co.	Agreement	11-7-10		7-565	Connection track on White River Lumber Co.'s R/W.
35	White River Lumber Co.	CM&P Ry. Co.	Agreement	11-7-10		7-565	Connection track on White River Lumber Co.'s R/W. Trackage rights on White River Lumber Co.'s R/W.



RIGHT OF WAY AND TRACK MAP
CHICAGO, MILWAUKEE & ST. PAUL RY. CO.

OPERATED BY THE
CHICAGO, MILWAUKEE & ST. PAUL RY. CO.
COAST DIVISION ENUMCLAW LINE
STATION 511+78.1 TO STATION 124+38.8

Sheet No. 2 of 5 sheets of C. M. & St. P. Ry. Co. Main Line
from survey station 511+78.1 to survey station 124+38.8

A.E. Lodge
Valuation Engineer

SCALE: 1 IN. = 4 MILES JUNE 30, 1918.
OFFICE OF VALUATION ENGINEER
CHICAGO, ILLINOIS.

V.W.10
4

KING