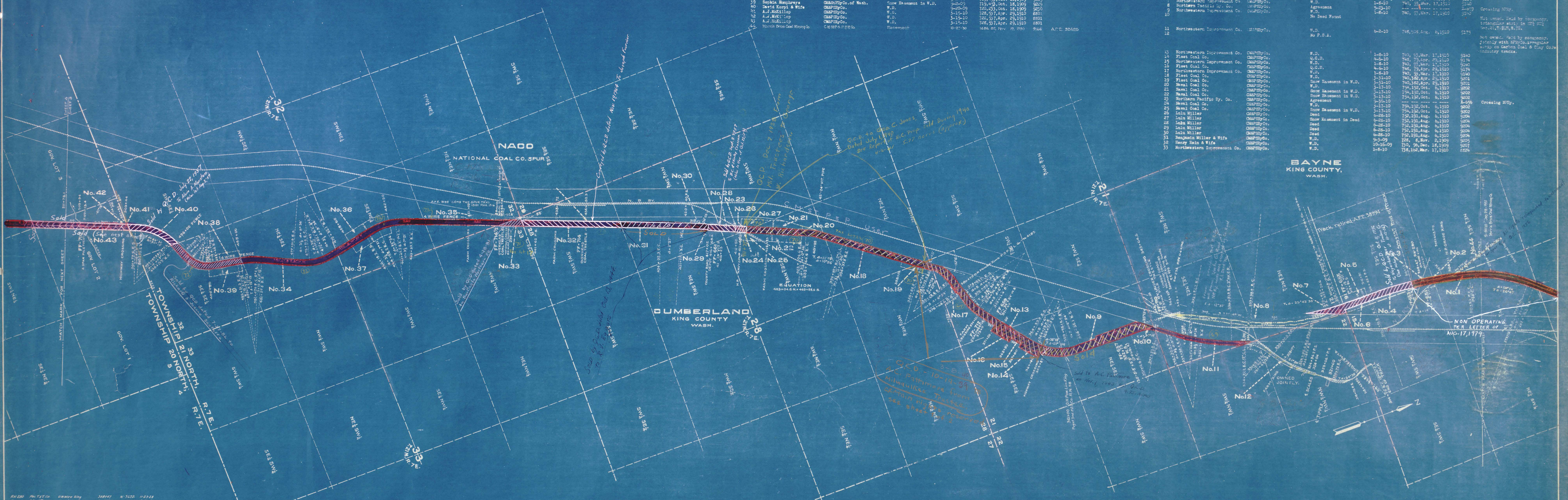


PARTIAL NUMBER	QUANTY	GRANTEE	INSTRUMENT	DATE	RECORD	CHICAGO'S NO.	REMARKS
15	1/2	Sophia Humphreys	W.D.	9-2-09	719,453, Oct. 18, 1909	9229	Not owned. Held by company. Irregular strip on National Coal Co.'s industry tracks.
16	1/2	Sophia Humphreys	CM&STP Co. of Wash.	9-2-09	719,453, Oct. 18, 1909	9229	
17	1/2	Sophia Humphreys	CM&STP Co. of Wash.	9-2-09	719,453, Oct. 18, 1909	9229	
18	1/2	Sophia Humphreys	CM&STP Co. of Wash.	9-2-09	719,453, Oct. 18, 1909	9229	
19	1/2	Sophia Humphreys	CM&STP Co. of Wash.	9-2-09	719,453, Oct. 18, 1909	9229	
20	1/2	David Korpi & Wife	CM&STP Co.	9-20-09	720,235, Oct. 18, 1909	9270	
21	1/2	A.J. McMillon	CM&STP Co.	1-15-10	728,577, Apr. 29, 1910	8601	
22	1/2	A.J. McMillon	CM&STP Co.	1-15-10	728,577, Apr. 29, 1910	8601	
23	1/2	A.J. McMillon	CM&STP Co.	1-15-10	728,577, Apr. 29, 1910	8601	
24	1/2	Morris Bros Coal Mining Co.	CM&STP Co.	9-27-30	1486,82, Nov. 19, 1930	9166	A.P.F. 304225

PARTIAL NUMBER	QUANTY	GRANTEE	INSTRUMENT	DATE	RECORD	CHICAGO'S NO.	REMARKS
1	1/2	Northwestern Improvement Co.	CM&STP Co.	1-8-10	740, 93, Mar. 17, 1910	9140	
2	1/2	P. Gibbons & Wife	CM&STP Co.	10-29-09	664, 518, Nov. 26, 1909	9155	
3	1/2	P. Gibbons & Wife	CM&STP Co.	10-29-09	664, 518, Nov. 26, 1909	9155	
4	1/2	P. Gibbons & Wife	CM&STP Co.	10-29-09	664, 518, Nov. 26, 1909	9155	
5	1/2	P. Gibbons & Wife	CM&STP Co.	10-29-09	664, 518, Nov. 26, 1909	9155	
6	1/2	Northwestern Improvement Co.	CM&STP Co.	1-8-10	740, 93, Mar. 17, 1910	9140	
7	1/2	Northwestern Improvement Co.	CM&STP Co.	1-8-10	740, 93, Mar. 17, 1910	9140	
8	1/2	Northwestern Improvement Co.	CM&STP Co.	1-8-10	740, 93, Mar. 17, 1910	9140	
9	1/2	Northwestern Improvement Co.	CM&STP Co.	1-8-10	740, 93, Mar. 17, 1910	9140	
10	1/2	Northwestern Improvement Co.	CM&STP Co.	1-8-10	740, 93, Mar. 17, 1910	9140	
11	1/2	Northwestern Improvement Co.	CM&STP Co.	1-8-10	740, 93, Mar. 17, 1910	9140	
12	1/2	Northwestern Improvement Co.	CM&STP Co.	1-8-10	740, 93, Mar. 17, 1910	9140	



R.W. 250 P.M. T. & Co. City of Tacoma
 R.W. 250 City of Tacoma
 38847
 N. 3672
 W. 2550
 11-23-28
 3-21-29

Sheet No. 3 of 7 sheets of C. M. & St. P. Ry. Co. Main Line
 from survey station 299+74.7 to survey station 511+78.1

A. E. Lodge
 Valuation Engineer

RIGHT OF WAY AND TRACK MAP
CHICAGO, MILWAUKEE & ST. PAUL RY. CO.

OPERATED BY THE
CHICAGO, MILWAUKEE & ST. PAUL RY. CO.
 COAST DIVISION
 STATION 299+74.7 TO STATION 511+78.1

SCALE: 1 IN. = 4 MILES
 JUNE 30, 1918
 OFFICE OF VALUATION ENGINEER
 CHICAGO, ILLINOIS



KING