

REV. A: - COLOR CODE REVISED; NUMERAL REF.; PIPING CODE; PLACE & DATE OF PAINTING; WORK ORDER No. & CLASS No. WERE ADDED; "THE MILW. RD" WAS REPLACED BY PLATE MONOGRAM: JEB-611-53.  
REV. "B" NUMBER PLATE ADDED R.J.P. 4-22-57

KEY No	COLOR	DUPONT DULUX	NUMERALS & LETTERS	DRG. NO.
1	WHITE	95-001	10" NUMERALS	D-11241
2	MAROON	88-8842	10" LETTER "E"	D-13753
3	ORANGE	88-8843	5" NUMERALS	E-10110
4	BLACK	88-762	3" NUMERALS	E-10112
5	RED	88-909	3" LETTERS	E-10111
6	LIGHT GRAY	88-1621	2" LETTERS	E-11024
7	ALUMINUM	166-120		

PP-6747621

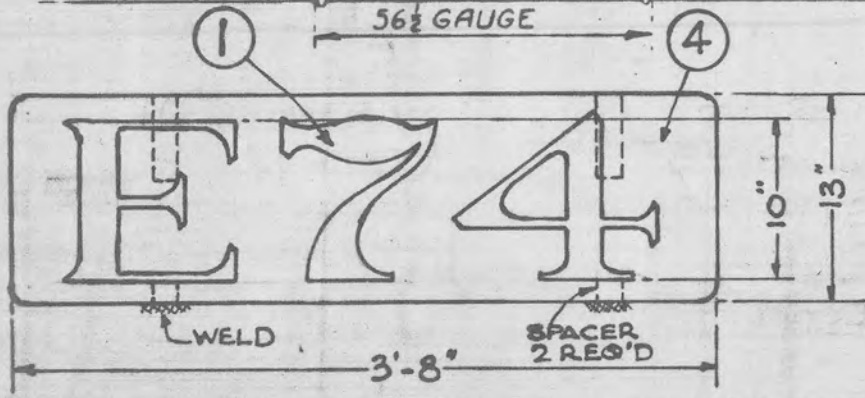
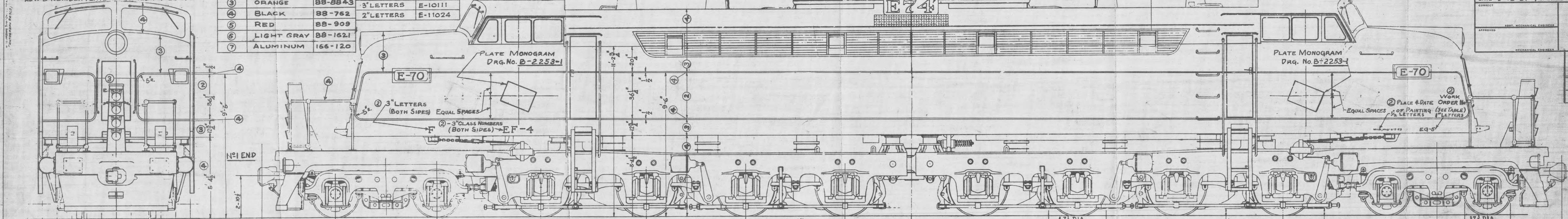
B A REV.

SUPERSEDES		REFERENCE GROUP NO.
C. M. ST. P. & P. R. R. MECHANICAL DEPT. MILWAUKEE		A-5459
DATE 2-15-51	CHECKED	DATE OF THIS PRINT
DRAWN E. N.   TRACED		
CORRECT		
APPROVED		
MECHANICAL ENGINEER		
MECHANICAL ENGINEER		

Cascade Rail Foundation -- www.milwelectric.org  
Courtesy of Gary Pember

PAINTING AND STENCILLING

WORK ORDER NUMBER	ELECTRIC LOCOMOTIVES NUMBER	CLASS
EQ-5	E70-E79	EF-4
EG-7	E20-E21	EP-4



PIPING COLOR CODE	
FUEL OIL	RED
LUBE OIL	YELLOW
WATER	BLUE
AIR	GREEN
STEAM	ORANGE