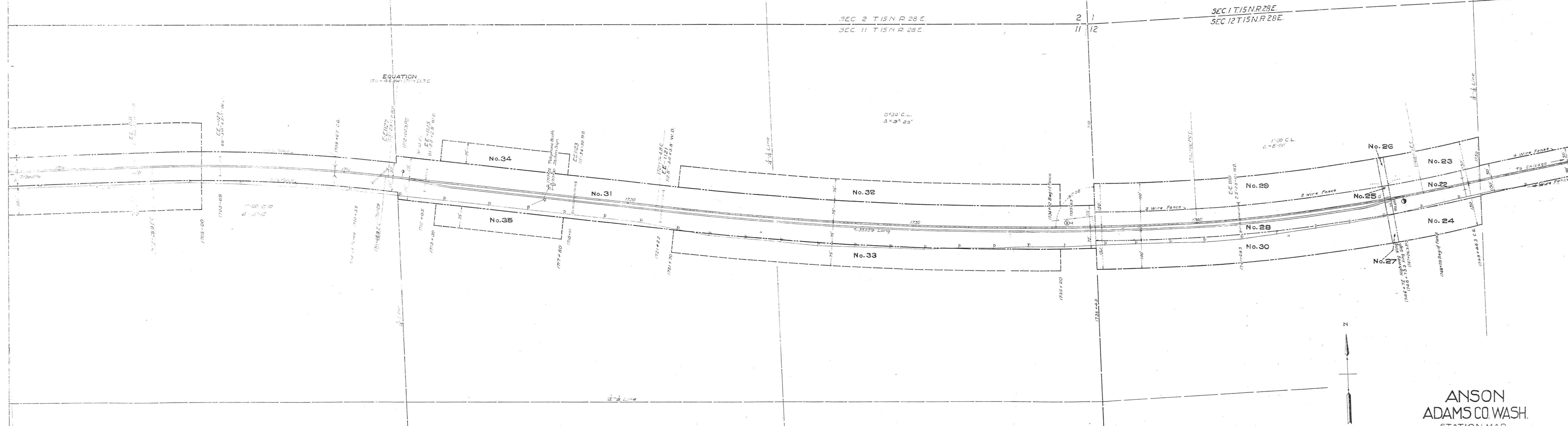


PARCEL NUMBER	GRANTOR	GRANTEE	INSTRUMENT	DATE	RECORD	SECTION'S NO.	SUMMARY
22	James W. Zinn	CHAS. PRYCO. of Wash.	W.D.	7-5-07	46, 404, Dec. 1, 1914	561	
23	James W. Zinn	CHAS. PRYCO. of Wash.	Cond. W.D.	7-5-07	46, 404, Dec. 1, 1914	561	
24	James W. Zinn	CHAS. PRYCO. of Wash.	Cond. W.D.	7-5-07	46, 404, Dec. 1, 1914	561	
25	James W. Zinn	CHAS. PRYCO. of Wash.	W.D.	7-5-07	46, 404, Dec. 1, 1914	561	
26	James W. Zinn	CHAS. PRYCO. of Wash.	Cond. W.D.	7-5-07	46, 404, Dec. 1, 1914	561	
27	James W. Zinn	CHAS. PRYCO. of Wash.	Cond. W.D.	7-5-07	46, 404, Dec. 1, 1914	561	
28	James W. Zinn	CHAS. PRYCO. of Wash.	W.D.	7-5-07	46, 404, Dec. 1, 1914	561	
29	James W. Zinn	CHAS. PRYCO. of Wash.	Cond. W.D.	7-5-07	46, 404, Dec. 1, 1914	561	
30	James W. Zinn	CHAS. PRYCO. of Wash.	Cond. W.D.	7-5-07	46, 404, Dec. 1, 1914	561	
31	C. Reichenbaum et al.	CHAS. PRYCO. of Wash.	W.D.	5-27-07	25, 512, June 22, 1907	569	
32	C. Reichenbaum et al.	CHAS. PRYCO. of Wash.	Cond. W.D.	5-27-07	25, 512, June 22, 1907	569	
33	C. Reichenbaum et al.	CHAS. PRYCO. of Wash.	W.D.	5-27-07	25, 512, June 22, 1907	569	
34	C. Reichenbaum et al.	CHAS. PRYCO. of Wash.	Cond. W.D.	5-27-07	25, 512, June 22, 1907	569	



**ANSON
ADAMS CO. WASH.**
 STATION MAP
 LANDS, TRACKS & STRUCTURES
CHICAGO, MILWAUKEE & ST. PAUL RY. CO.
 OPERATED BY THE
 CHICAGO, MILWAUKEE & ST. PAUL RY. CO.
 COLUMBIA DIVISION, MAIN LINE
 STATION 1753+60 TO STATION 1698+25
 SCALE 1"=100 FT. APRIL 3, 1916
 OFFICE OF CHIEF ENGINEER
 CHICAGO, ILLINOIS.

Sheet No. 28 of 24 sheets of C. M. & St. P. Ry. Co. Main Line
 from survey station 1733+60 to survey station 1698+25
A. E. Lodge
 Valuation Engineer

